

ACMS

## Regional Meeting

FRIDAY, NOVEMBER 14 - SUNDAY, NOVEMBER 16, 2014

# Charleston, SC

WILD DUNES RESORT



# Final Program



*This activity is jointly sponsored by  
IAHB and ACMS*

ACMS

American College  
of Mohs Surgery

**IAHB**  
Institute for the  
Advancement of Human Behavior

Friday, November 14 - Sunday, November 16, 2014  
CHARLESTON, SC • WILD DUNES RESORT



The logo for the American College of Mohs Surgery (ACMS) is displayed in white serif font within a dark blue arched banner.

## Regional Meeting

FRIDAY, NOVEMBER 14 - SUNDAY, NOVEMBER 16, 2014

# Charleston, SC

WILD DUNES RESORT



# Final Program

© 2014

American College of Mohs Surgery

No part of this publication may be reproduced without the prior written permission of the ACMS.

Photos courtesy of Wild Dunes Resort

American College of Mohs Surgery

555 East Wells Street, Suite 1100

Milwaukee, WI 53202

Phone: (414) 347-1103

(800) 500-7224

Fax: (414) 276-2146

Email: [info@mohscollege.org](mailto:info@mohscollege.org)

Website: [www.mohscollege.org](http://www.mohscollege.org)

[www.SkinCancerMohsSurgery.org](http://www.SkinCancerMohsSurgery.org)



## TABLE OF CONTENTS

ACMS 2014-2015 Officers and Board of Directors .....	1
Welcome .....	2
Program at a Glance .....	3
CME Information.....	4
Disclosure Information.....	5
Learning Objectives.....	6
Hotel and Travel Information.....	8
Evening Excursion.....	8
Wild Dunes Property Map.....	9
Business Centers.....	9
ACMS/ACGME/ACD Fellowship Training Director Listing .....	10
Invited Faculty and Guest Speakers .....	11
Scientific Program – Friday, November 14 .....	12
Scientific Program – Saturday, November 15 .....	14
Scientific Program – Sunday, November 16.....	16
Faculty Index.....	17

## ACMS 2014-2015 OFFICERS AND BOARD OF DIRECTORS

### OFFICERS

J. Ramsey Mellette, Jr., MD  
*President*

John G. Albertini, MD  
*Vice President*

Thomas Stasko, MD  
*Secretary/Treasurer*

Scott W. Fosko, MD  
*Immediate Past President*

### BOARD OF DIRECTORS

Murad Alam, MD

Christopher J. Arpey, MD

Elizabeth M. Billingsley, MD

John A. Carucci, MD, PhD

Nkanyenzi Ferguson, MD (*Fellow-in-Training Board Observer; non-voting*)

Timothy C. Flynn, MD

Chrysalyne D. Schmulse, MD, MSCE

Allison T. Vidimos, MD

Summer R. Youker, MD

John A. Zitelli, MD (*Board Historian; non-voting*)

Fiona M. Zwald, MD, MRCPI

### REGIONAL MEETING COMMITTEE

Christopher J. Miller, MD, *Chair*

Michel A. McDonald, MD, *Vice Chair*

J. Ramsey Mellette, Jr., MD

Thomas Stasko, MD

John G. Albertini, MD, *CME Committee Chair*

Jerry D. Brewer, MD, *Ex-officio*

### EXECUTIVE OFFICE STAFF

Rebecca Brandt, CAE, Executive Director

Brett Kell, MSM, Communications Manager

Mario Ortiz, Meetings Manager

Mary Randall, Membership Manager

Susan Sadowski, Education Manager

Emily Thurow, Administrative Coordinator





# WELCOME



Dear ACMS Member,

On behalf of the Board of Directors, I welcome you to the 2014 Regional Meeting of the American College of Mohs Surgery. The inaugural meeting in San Diego has proven the Regional Meeting to be a great interactive and intimate setting for members to connect, share ideas, and improve how we practice. I am proud to help carry this tradition and level of learning into its second year.

I have fond memories of Charleston, as I attended medical school at the Medical University of South Carolina and served as Medical Director of the South Carolina Military Department Joint Services Detachment. The city holds a special place in my heart and I'm happy many of my colleagues are able to partake in everything charming Charleston has to offer. Shuttle service from the Wild Dunes Resort, our meeting venue, will be provided on Saturday evening, November 15 for attendees to enjoy the downtown area (page 8). If you're staying on site, Wild Dunes offers a variety of recreation, activities and services.

I truly appreciate the Regional Meeting Committee, headed by Chair, Dr. Christopher Miller, and their hard work to orchestrate an exceptional program highlighting a range of relevant topics that will help strengthen our skills and knowledge in cutaneous oncology and Mohs micrographic surgery. Special thanks go to the committee members, Drs. John Albertini, Thomas Stasko, Michel McDonald, and Jerry Brewer for their dedication and contributions in planning this event. Thank you also to the faculty members participating in this meeting for their willingness to share their expertise. And of course, thank you to the ACMS membership, whose involvement and engagement in the specialty of Mohs surgery has brought us to where we are today as an organization.

Sincerely,



J. Ramsey Mellette, Jr., MD  
President



Dear Colleague,

Welcome to the 2014 ACMS Regional Meeting in Charleston, SC. We look forward to a fun and informative educational program.

We have sought input from numerous members of the College to help develop a program that builds on the successes of the inaugural ACMS Regional Meeting, which was skillfully chaired by Jerry Brewer, MD, last year in San Diego.

This year's program also addresses practical issues pertinent to the daily practice of any Mohs surgeon. Each session is designed to encourage a relaxed atmosphere with regular interactions between the speakers and attendees. We hope this format enhances learning and encourages networking and collaboration among our members.

We are grateful to the numerous ACMS members who have contributed to development of the program and have committed their time and energy to participate in the program. We especially thank the ACMS Officers, Board of Directors, the Regional Meeting Committee members, and the Executive Office staff for their hard work to make this program possible.

A special thanks to J. Ramsey Mellette, Jr., MD, ACMS President, and John G. Albertini, MD, ACMS Vice President and CME Committee Chair, who have dedicated considerable time and thought to the development of this program.

We thank you for attending and look forward to seeing you again at the 2015 Annual Meeting in San Antonio.

Sincerely,



Christopher J. Miller, MD  
Chair, ACMS 2014 Regional Meeting Committee



# PROGRAM AT A GLANCE

The Palms Ballroom is located in the Sweetgrass Pavilion.  
Palmetto Hall is adjacent to the Sweetgrass Pavilion.  
The Grand Pavilion is just off the beach. See map on page 9.



## FRIDAY, NOVEMBER 14

10:00 am – 5:30 pm	Registration	Palms Foyer
10:00 am – 5:30 pm	Speaker Ready Room	Palms 3
1:00 – 1:15 pm	Opening Session and Welcome	Palms Ballroom
1:15 – 2:15 pm	What's New in Cutaneous Oncology	Palms Ballroom
2:15 – 3:15 pm	How Would You Reconstruct It?	Palms Ballroom
3:15 – 3:30 pm	Break	Palms Foyer
3:30 – 4:30 pm	Controversies in Mohs Surgery and Oncology	Palms Ballroom
4:30 – 5:30 pm	Reconstruction Strategies That I Used to Like, but Now Like Another One Better ♦	Palms Ballroom
6:30 pm	Welcome Reception	Grand Pavilion

## SATURDAY, NOVEMBER 15

6:30 am - 3:30 pm	Registration	Palms Foyer
6:30 am – 3:30 pm	Speaker Ready Room	Palms 3
6:45 – 7:45 am	Continental Breakfast	Palms Foyer
8:00 – 9:00 am	Morbidity and Mortality Due to Pathologic Errors in Mohs	Palms Ballroom
9:00 – 10:30 am	What the Mohs Surgeon Must Know About Tumors Requiring Multidisciplinary Care ♦	Palms Ballroom
10:30 – 11:00 am	Break	Palms Foyer
11:00 am – 12:00 pm	Practice Management Pearls	Palms Ballroom
12:00 – 1:00 pm	Lunch	Palmetto Hall
1:00 – 2:30 pm	Tumor Board ♦	Palms Ballroom
2:30 – 3:30 pm	Case-Based Anatomy Lessons of Specialty Sites ♦	Palms Ballroom
3:30 pm	Meeting adjourns for the day; enjoy Charleston	
3:30 – 4:30 pm	Presentation: Financial Planning Success for Physicians (optional, no cost; see p. 10)	Palms Ballroom
3:30 – 4:30 pm	Media Training opportunity (optional, no cost; see p. 15)	Boardwalk Inn Board Room
5:00 pm	Shuttle pickup for Charleston Harbor Cruise and Downtown Charleston (optional; see p. 8)	In front of Boardwalk Inn
5:30 – 7:00 pm	Harbor Cruise to Downtown Charleston (optional; see p. 8)	

## SUNDAY, NOVEMBER 16

6:15 – 7:15 am	Beachside Yoga (optional; see p. 8): \$25 per person, includes mat	Beachside Dunes volleyball courts (adjacent to Grand Pavilion)
7:00 – 10:00 am	Speaker Ready Room	Palms 3
7:30 – 8:00 am	Continental Breakfast	Palms Foyer
8:00 – 9:30 am	Common Complications: Cases to Show How I Caused, Prevented, and Fixed Them ♦	Palms Ballroom
9:30 – 9:45 am	Break	Palms Foyer
9:45 – 11:15 am	Issues That Make You Look Things Up	Palms Ballroom
11:15 am – 12:45 pm	Maintenance of Certification: Office Safety	Palms Ballroom
12:45 – 1:00 pm	Closing Remarks and Adjournment	Palms Ballroom

♦ Represents advanced expertise level course



# CME INFORMATION

## PHYSICIAN ACCREDITATION STATEMENT

This activity has been planned and implemented in accordance with the Essential Areas and Policies of the Accreditation Council for Continuing Medical Education (ACCME) through the joint sponsorship of the Institute for the Advancement of Human Behavior (IAHB) and American College of Mohs Surgery. The IAHB is accredited by the ACCME to provide continuing medical education for physicians.

## CREDIT DESIGNATION STATEMENT

The IAHB designates this live activity for a maximum of 13.0 *AMA PRA Category 1 Credits™*. Physicians should claim only the credit commensurate with the extent of their participation in the activity.

### CLAIM YOUR CME ONLY ONLINE!

To get your certificate, visit [ACMS.CmeCertificateOnline.com](http://ACMS.CmeCertificateOnline.com) and click on the '2014 Mohs College Regional Meeting' event to evaluate various aspects of the program. You may print your certificate immediately (encouraged), anywhere you have internet access. A copy of the certificate will also be emailed to you if additional copies are needed (check your spam filter and junk email folder if you do not see it come through). The emailed copy is simply a backup if you didn't print it right away.

### IMPORTANT!

The online certificate site will be available starting at the end of the day November 16, 2014 through December 16, 2014. After that date, the site will be removed and certificates will no longer be available. If you need a CME certificate, you must complete the evaluation and certificate process prior to that date; otherwise you will forfeit your credit for the course. Please address any questions about the process to [Help.CmeCertificateOnline.com](http://Help.CmeCertificateOnline.com).

## AAD RECOGNIZED CREDIT APPROVAL STATEMENT

The American College of Mohs Surgery Regional Meeting (Program #64200) is recognized by the American Academy of Dermatology for 13.0 AAD Recognized Credit(s) and may be used toward the American Academy of Dermatology's Continuing Medical Education Award. AAD Members should self-report their AAD recognized Credits via the AAD Online Transcript Program. **Please note the ACMS Regional Meeting is Program #64200.**

## MAINTENANCE OF CERTIFICATION CREDITS

Please complete the MOC Credit Self-Assessment, available in 'MOC: Office Safety' on Sunday, November 16, 2014, 11:15 am – 12:45 pm, and return to the Registration Desk. **You must update your American Board of Dermatology MOC tables to reflect the 25 question credits available for this session.**

The completion of the Self-Assessment exercise satisfies a portion of the Self-Assessment module of Component 2 in MOC.

Note: If you have previously claimed MOC credits for "MOC: Office Safety" at the 2014 Annual Meeting, you cannot claim credits for "MOC: Office Safety" at the 2014 Regional Meeting.

## DISCLOSURE OF CONFLICTS OF INTEREST

To comply with the Accreditation Council for Continuing Medical Education (ACCME) Standards of Commercial Support on the need for disclosure and monitoring of proprietary and financial interests that may affect the scientific integrity and balance of content delivered in continuing medical education activities under our auspices. The American College of Mohs Surgery (ACMS) requires that all CME-certified activities be developed free from the control of a commercial interest and be balanced, objective, and scientifically rigorous. Anyone with the ability to affect the content of an educational activity must disclose relevant financial relationships with health organizations producing, marketing, re-selling, or distributing health care goods or services consumed by, or used on, patients. The ACMS will disclose faculty and commercial relationships at the Regional Meeting.

## DISCLOSURE OF DISCUSSION OF NON-FDA APPROVED USES FOR PHARMACEUTICAL PRODUCTS AND/OR MEDICAL DEVICES

The ACMS requires that all faculty presenters identify and disclose any off-label uses for pharmaceutical and medical device products. The ACMS recommends that each physician fully review all the available data on new products or procedures prior to instituting them with patients.

## DISCLAIMER

The views expressed and the techniques presented by the speakers of the ACMS/IAHB sponsored educational meetings are not necessarily shared or endorsed by the organizations. Anyone with the ability to affect the content of an educational activity must disclose relevant financial relationships with health organizations producing, marketing, re-selling, or distributing health care goods or services consumed by, or used on, patients, as well as any unapproved or off-label uses of medical devices or pharmaceutical agents that they discuss, describe, or demonstrate during their presentations. Meeting attendees should use their independent judgment in applying the information discussed in these educational sessions in the treatment of patients.



# DISCLOSURE INFORMATION

## INTEREST DISCLOSURES

As an organization accredited by the ACCME to sponsor continuing medical education activities, the Institute for the Advancement of Human Behavior (IAHB) is required to disclose any real or apparent conflicts of interest (COI) that any speakers may have related to the content of their presentations.

The IAHB requires that all individuals (including spouse/domestic partner) in a position to control/influence content in a program designated for *AMA Physician's Recognition Award Category 1 credits™* disclose any financial interest/arrangement or affiliation with an ACCME-defined commercial organization that may impact on his/ her presentation (i.e. grants, research support, honoraria, member of speakers' bureau, consultant, major stock shareholder, etc.). In addition, the faculty member must disclose when an unlabeled use of a commercial product or an investigational use not yet approved for any purpose is discussed during the educational activity.

## NO RELEVANT CONFLICTS OF INTEREST TO DISCLOSE:

Murad Alam, MD  
Christopher J. Arpey, MD\*  
Jennifer D. Bahner, MD  
Elizabeth M. Billingsley, MD  
Jeremy S. Bordeaux, MD, MPH\*  
Jerry D. Brewer, MD\*  
Marc D. Brown, MD  
Mariah R. Brown, MD  
John Cafardi, MD  
Bryan T. Carroll, MD, PhD  
Todd V. Cartee, MD  
John A. Carucci, MD, PhD\*  
Nicholas B. Countryman, MD, MBA  
Terry A. Day, MD  
James R. DeBloom, Jr., MD  
Keith L. Duffy, MD  
Leonard M. Dzubow, MD  
Galen H. Fisher, MD  
Timothy C. Flynn, MD  
Scott W. Fosko, MD  
Dori Goldberg, MD  
Leonard H. Goldberg, MD

Christopher B. Harmon, MD  
Kelly Harms, MD, PhD  
Todd E. Holmes, MD  
S. Tyler Hollmig, MD  
Brett A. Kell, MSM  
Brian C. Leach, MD  
Erica H. Lee, MD  
Barry Leshin, MD  
Vanessa C. Lichon, MD  
Deborah F. MacFarlane, MD, MPH\*  
Ian A. Maher, MD  
Juan-Carlos Martinez, MD  
Michel A. McDonald, MD\*  
J. Ramsey Mellette, Jr., MD\*  
Bradley G. Merritt, MD  
Christopher J. Miller, MD\*  
Vineet Mishra, MD  
Mayange Mitchell  
Sheryl Morgan  
Girish S. Munavalli, MD, MHS  
Ann G. Neff, MD  
Jason G. Newman, MD

Michelle T. Nguyen, MD  
Rajiv I. Nijhawan, MD  
Jonathan Olson, MD  
Vishal A. Patel, MD  
Daniel J. Pearce, MD  
Adam Perry, MD  
Steven M. Rotter, MD  
Susan Sadowski  
Chrysalyne D. Schmults, MD, MSCE  
Thuzar M. Shin, MD, PhD  
Joseph F. Sobanko, MD  
Thomas Stasko, MD\*  
William G. Stebbins, MD  
John M. Strasswimmer, MD, PhD  
Valencia D. Thomas, MD  
Marta J. VanBeek, MD  
J. Michael Wentzell, MD  
Summer R. Youker, MD  
John A. Zitelli, MD  
Fiona M. Zwald, MD, MRCPI

## RELEVANT CONFLICTS OF INTEREST TO DISCLOSE\*\*

John G. Albertini, MD\*      Research Grant Site Principal Investigator - Genentech

\*Indicates Scientific Program Committee and CME & Education Committee Members

\*\*Having a financial relationship with an ACCME-defined commercial organization, or discussing an unlabeled use of a commercial product, may not prevent a speaker from making a presentation. However, the existence of a relevant financial relationship must be disclosed to the CME & Education Committee and Scientific Program Committee prior to the conference, so that any relevant conflict of interest may be resolved prior to that individual's participation in the CME activity.



## LEARNING OBJECTIVES

Upon completion of the Regional Meeting, participants will be able to describe the latest advances in the treatment of skin cancer, discuss recent research findings in the area of Mohs micrographic surgery and cutaneous oncology, and explain new techniques in reconstruction that promote optimal surgical outcomes.

Specific learning objectives, upon completion of the ACMS Regional Meeting include, but are not limited to:

- Identify the most current therapeutic options and management strategies for actinic keratoses, squamous cell cancer, and basal cell cancer;
- Explain recent advances in research for the role of sentinel lymph node biopsy in the staging of patients with melanoma;
- Select reconstruction strategies that balance the best functional and aesthetic outcomes with the least morbidity;
- Describe the rationale for the management of the anticoagulants and implanted electronic devices during cutaneous surgery;
- Identify potential pitfalls in flap repair, and recognize the potential advantages of alternative repair options;
- Devise effective strategies in tissue processing to prevent pathologic errors during Mohs surgery;
- Assemble multidisciplinary care teams with other specialists to improve outcomes for tumors at high risk for local recurrence or metastasis;
- Implement five practical management pearls at their own practice setting;
- Discuss the clinical presentation and management of non-melanoma skin cancer at high risk for local recurrence or metastasis;
- Discuss the clinical presentation and management of melanocytic tumors at high risk for local recurrence or metastasis;
- Determine sites where the superficial and deep soft tissue anatomy can be problematic during Mohs surgery;
- Describe the causes of common complications for Mohs surgery and reconstructions at particular anatomic locations;
- Recognize categories of patients who may require alteration of routine surgical practice;
- Describe the management strategies for patients with medications that may affect surgical outcomes;
- Recognize patterns of perineural invasion and the utility of immunostains and paraffin sections to facilitate detection;
- Discuss how the caliber of the nerve invaded by tumor influences management decisions.

## AWARD NOMINATIONS FOR 2015

### FREDERIC E. MOHS AWARD

This award recognizes an active ACMS member who has devoted considerable time and effort over many years to further the goals and objectives of the organization and to promote the specialty.

Qualities for which candidates will be rated and judged by the Mohs Award Committee include excellence in teaching, clinical practice, scientific contribution, innovation, mentorship and the promotion of Mohs surgery.

**A call for nominations will be sent to members in December.** Winners are notified in March, and must commit to attending the Annual Membership Business Meeting. The winner is asked to select a fellow member to present the award.

### TROMOVITCH AWARD

This award is open to fellows-in-training or those in the first year after completing an ACMS-approved fellowship. Winner(s) will be selected onsite at the Annual Meeting after presentations, and announced at the fellows-in-training reception.

**See the Call for Abstracts online for criteria and details:**

<http://www.mohscollege.org/meetings/annualmeeting/2015/am15-call-for-abstracts.pdf>

Applicants are responsible for applying for Tromovitch Award at time of abstract submission. Recipient(s) must submit an article suitable for publication in the Journal of Dermatologic Surgery by March 2016. Upon receipt from the Journal of the submitted article, award recipient(s) receive complimentary membership dues for first year of ACMS membership and free registration for 2016 Annual Meeting.







## COMING SOON: the redesigned [www.mohscollege.org](http://www.mohscollege.org)

- Same features; clean, fresh look
- Streamlined menus for easier access to familiar resources
- Post Mohs surgeon and histotech job listings instantly at no cost
- Easily renew dues and update your profile
- Reorganized and updated Advocacy & Public Policy page
- Social media integration

## FOLLOW ACMS ON SOCIAL MEDIA

Follow us on Twitter @MohsCollege



@MohsCollege

Use #ACMSRM14 during the meeting

[www.twitter.com/MohsCollege](http://www.twitter.com/MohsCollege)



Find us on  
**Facebook**

[www.facebook.com/MohsCollege](http://www.facebook.com/MohsCollege)





## HOTEL AND TRAVEL INFORMATION

### WILD DUNES RESORT

5757 Palm Boulevard  
Isle of Palms, South Carolina 29451  
Phone: (888) 778-1876  
[www.wilddunes.com](http://www.wilddunes.com)

### WILD DUNES RESORT PARKING

All parking is complimentary.

### CHARLESTON TOURIST INFORMATION

[www.charleston.com](http://www.charleston.com)  
[www.charlestoncvb.com](http://www.charlestoncvb.com)

### SHUTTLE SERVICE

For those who wish to enjoy Charleston on their own, one complimentary round-trip shuttle ride to and from Downtown Charleston will be provided on Saturday evening, November 15.

### WIRELESS INTERNET

Wireless Internet service is not available in the meeting spaces; however, complimentary service is available in all sleeping rooms.

### BEACHSIDE YOGA

Join ACMS members Saturday morning at 6:15 am for yoga on the Beachside Dunes volleyball courts adjacent to Grand Pavilion. Mats will be provided. Capacity is 25 participants on a first-come, first-served basis. Cost is \$25. *\*Check at Registration Desk to ensure spots are still available.*



## GO GREEN, GET GREEN!

Earn a \$5 food & beverage credit to use at Wild Dunes Resort restaurants each day you decline housekeeping services, except the day of your departure, as a courtesy for conserving our environment.

To participate, hang your Go Green, Get Green card on your door before 2 a.m. Your credit will be placed under your door overnight.

## HARBOR CRUISE AND CHARLESTON SHUTTLE

SATURDAY, NOVEMBER 15

### Charleston Harbor Cruise

Enjoy a private, chartered cruise to Downtown Charleston aboard the sailing catamaran Palmetto Breeze. Cost is \$65 per person; capacity is limited to 75 guests. Cost includes appetizers and wine, beer or margaritas. Cruise launches from Shem Creek Marina and arrives in Downtown Charleston:

- 5:00 pm departure to marina from Wild Dunes; meet in front of Boardwalk Inn
- 7:30 pm arrival in Charleston; shuttle will drop guests off at US Customs House downtown
- 8:00, 9:00 or 10:00 pm departures from Charleston at the U.S. Customs House (corner of East Bay & Market Streets), returning to Wild Dunes

*Note: A cab to Downtown Charleston from Wild Dunes is about \$60; the cruise is \$65, includes appetizers and drinks, and drops you off downtown in style!*

### Charleston Shuttle

For those who wish to enjoy Charleston on their own, one complimentary round-trip shuttle ride to and from Downtown Charleston will be provided on Saturday evening:

- 5:00 and 7:00 pm departure from Wild Dunes; meet in front of Boardwalk Inn
- 8:00, 9:00 or 10:00 pm departures from Charleston at the U.S. Customs House (corner of East Bay & Market Streets), returning to Wild Dunes





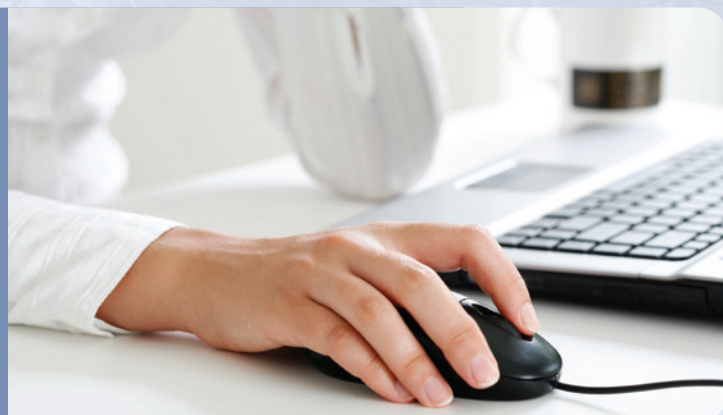
# WILD DUNES PROPERTY MAP



## BUSINESS CENTERS

For those guests requiring access to the tools listed below, Wild Dunes offers Business Centers in the **Sweetgrass Pavilion** just off the main meeting space, as well as in the **Village Plaza** between the Boardwalk Inn and Sweetgrass Pavilion.

- Computers
- Printers
- Fax machines
- Laptop data ports
- Copiers





# ACMS/ACGME/ACD FELLOWSHIP TRAINING DIRECTOR LISTING

Murad Alam, MD  
Joseph Alcalay, MD  
John G. Arlette, MD, FRCPC  
Juliet L. Aylward, MD  
Anna A. Bar, MD  
Anthony Benedetto, DO  
Richard Bennett, MD  
David G. Brodland, MD  
Timothy S. Brown, MD  
John A. Carucci, MD, PhD  
Suresh Chandra, MD  
David Ciocon, MD  
Anna S. Clayton, MD  
Armand B. Cognetta, MD  
Brett Coldiron, MD  
Joel Cook, MD  
Heidi B. Donnelly, MD  
Daniel B. Eisen, MD  
Timothy Elliot, MD  
Algin B. Garrett, MD  
Roy G. Geronemus, MD  
Hugh M. Gloster, Jr., MD  
Nicholas J. Golda, MD  
David J. Goldberg, MD, JD  
Leonard H. Goldberg, MD, MBChB

Glenn D. Goldman, MD  
Hubert T. Greenway, Jr., MD  
C. William Hanke, MD, MPH  
Christopher B. Harmon, MD  
Conway C. Huang, MD  
Eva A. Hurst, MD  
Satori Iwamoto, MD, PhD  
Nathaniel J. Jellinek, MD  
S. Brian Jiang, MD  
Timothy M. Johnson, MD  
Jeremy Kampp, MD  
David E. Kent, MD  
David Kriegel, MD  
Gary P. Lask, MD  
Naomi Lawrence, MD  
Peter K. Lee, MD, PhD  
David J. Leffell, MD  
Deborah F. MacFarlane, MD, MPH  
Mary E. Maloney, MD  
J. Ramsey Mellette, Jr., MD  
Christopher J. Miller, MD, BA  
Gary D. Monheit, MD  
Christian Murray, MD, BSC, FRCPC  
Kishwer Nehal, MD  
Suzanne Olbricht, MD

Ida F. Orengo, MD  
Michael L. Ramsey, MD  
Désirée Ratner, MD  
Randall K. Roenigk, MD  
Arlene S. Rogachefsky, MD  
Thomas Rohrer, MD  
Eli R. Saleeby, MD  
Paul J.M. Salmon, MD  
Michael D. Sarradet, MD  
Chrysalyne D. Schmults, MD, MSCE  
R. Stan Taylor, III, MD  
Abel Torres, MD, JD  
Marta VanBeek, MD, MPH  
Allison T. Vidimos, MD, Pharm  
Carl Vinciullo, MD  
Timothy Wang, MD  
James W. Whalen, MD  
Duane C. Whitaker, MD  
Siegrid S. Yu, MD  
Christopher Zachary, MD, MBBS, MRCP  
John A. Zitelli, MD  
David M. Zloty, MD

## Physician financial services presentation:

### **FINANCIAL PLANNING SUCCESS: OVERCOMING 3 CRITICAL ISSUES SPECIFIC TO MOHS SURGEONS**

3:30-4:30 pm • Palms Ballroom

\* Sign up at Registration Desk

You and your spouse are encouraged to join Matthew Dodge and Tim Beldner from Larson Financial, one of the nation's largest wealth management firm catering exclusively to physicians and their families for this interactive presentation. Learn more about 3 critical issues impacting the finances of Mohs surgeons, along with great examples of mistakes and success stories. They will share practical solutions that can be used immediately to help you, your practice, and family create and protect wealth.

Matt is a financial advisor and manager of the South Carolina team. Tim is the Southeast regional director, national speaker, and frequent contributor to the Doctor's Eyes Only Podcast. Their book, *DOCTOR'S EYES ONLY: Exclusive Strategies for Today's Doctors and Dentists*, is used as a financial guide that could help save physicians millions of dollars throughout their medical careers. The strategies and advice contained in the book are unique to the needs of high-income medical professionals. The Doctor's Eyes Only Podcast has helped hundreds of physician families across the country navigate financial and personal challenges.

#### **Learn more**

Company website: <http://larsonfinancial.com/>

Doctor's Eyes Only Podcast: [www.doctoreyesonly.com](http://www.doctoreyesonly.com)



## INVITED FACULTY AND GUEST SPEAKERS

- Murad Alam**, Northwestern University, Chicago, IL
- John G. Albertini**, The Skin Surgery Center, Winston-Salem, NC
- Jennifer D. Bahner**, Cleveland Clinic Dermatology, Cleveland, OH
- Elizabeth M. Billingsley**, Penn State Milton S. Hershey Medical Center, Hershey, PA
- Jeremy S. Bordeaux**, University Hospitals Case Medical Center, Cleveland, OH
- Marc D. Brown**, University of Rochester, Rochester, NY
- Mariah R. Brown**, University of Colorado, Aurora, CO
- John Cafardi**, The Skin Cancer Center/TriHealth, Cincinnati, OH
- Bryan T. Carroll**, EVMS Dermatology, Norfolk, VA
- Todd V. Cartee**, Penn State Milton S. Hershey Medical Center, Hershey, PA
- Nicholas B. Countryman**, Carmel, IN
- Terry A. Day**, Medical University of South Carolina, Charleston, SC
- James R. DeBloom, Jr.**, South Carolina Skin Cancer Center, Greenville, SC
- Keith L. Duffy**, University of Utah, Salt Lake City, UT
- Leonard M. Dzubow**, Media, PA
- Galen H. Fisher**, Laser & Skin Surgery Center of Richmond, PC, Richmond, VA
- Timothy C. Flynn**, Cary Skin Center, Cary, NC
- Scott W. Fosko**, Saint Louis University, St. Louis, MO
- Dori Goldberg**, UMass Memorial Medical Center, Worcester, MA
- Leonard H. Goldberg**, Derm Surgery Associates, Houston, TX
- Christopher B. Harmon**, Surgical Dermatology Group, Birmingham, AL
- Kelly Harms**, University of Michigan, Ann Arbor, MI
- Todd E. Holmes**, Fletcher Allen Health Care, Charlotte, VT
- S. Tyler Hollmig**, Stanford University Medical Center, Redwood City, CA
- Brian C. Leach**, Medical University of South Carolina, Charleston, SC
- Erica H. Lee**, Memorial Sloan Kettering Cancer Center, New York, NY
- Barry Leshin**, The Skin Surgery Center, Winston-Salem, NC
- Vanessa C. Lichon**, Premier Dermatology, Crest Hill, IL
- Deborah F. MacFarlane**, MD Anderson Cancer Center, Houston, TX
- Ian A. Maher**, Saint Louis University, St. Louis, MO
- Juan-Carlos Martinez**, Mayo Clinic, Jacksonville, FL
- Michel A. McDonald**, Vanderbilt University, Nashville, TN
- J. Ramsey Mellette, Jr.**, University of Colorado Health Center, Aurora, CO
- Bradley G. Merritt**, UNC Department of Dermatology, Chapel Hill, NC
- Christopher J. Miller**, Hospital of the University of Pennsylvania, Philadelphia, PA
- Vineet Mishra**, University of Texas-San Antonio, San Antonio, TX
- Mayange Mitchell**, Hospital of the University of Pennsylvania, Philadelphia, PA
- Girish S. Munavalli**, Dermatology, Laser & Vein Specialists of the Carolinas, Charlotte, NC
- Ann G. Neff**, Dermatology Associates, Bradenton, FL
- Jason G. Newman**, Pennsylvania Hospital, Philadelphia, PA
- Michelle T. Nguyen**, Brigham & Women's Faulkner Hospital, Jamaica Plain, MA
- Rajiv I. Nijhawan**, Dallas, TX
- Suzanne Olbricht**, Lahey Clinic, Burlington, MA
- Jonathan Olson**, Dermatology Laser & Vein Specialists, Charlotte, NC
- Vishal A. Patel**, Columbia University Medical Center, New York, NY
- Daniel J. Pearce**, WFUBMC Dermatology, Winston-Salem, NC
- Adam Perry**, Mount Pleasant, SC
- Steven M. Rotter**, Center for Skin Surgery, PLLC, Vienna, VA
- Chrysalyne D. Schmults**, Brigham & Women's Faulkner Hospital, Jamaica Plain, MA
- Thuzar M. Shin**, University of Pennsylvania, Philadelphia, PA
- Joseph F. Sobanko**, Hospital of the University of Pennsylvania, Philadelphia, PA
- Thomas Stasko**, University of Oklahoma, Oklahoma City, OK
- William G. Stebbins**, Vanderbilt Dermatology, Nashville, TN
- John M. Strasswimmer**, Delray Dermatology, Delray Beach, FL
- Valencia D. Thomas**, Mohs & Dermasurgery Center, Houston, TX
- Marta J. VanBeek**, University of Iowa Hospitals & Clinics, Iowa City, IA
- J. Michael Wentzell**, Skin Institute, Anacortes, WA
- Summer R. Youker**, Skin Cancer Surgery Center, Sacramento, CA
- John A. Zitelli**, UPMC Shadyside, Pittsburgh, PA
- Fiona M. Zwald**, Emory University, Atlanta, GA



# SCIENTIFIC PROGRAM – FRIDAY, NOVEMBER 14

1:00 – 1:15 PM

## OPENING SESSION AND WELCOME

Palms Ballroom, inside the Sweetgrass Pavilion

(Non-CME Session)

*J. Ramsey Mellette Jr., MD, ACMS President*

*John G. Albertini, MD, ACMS Vice President, CME & Education Committee Chair*

1:15 – 2:15 PM

## WHAT'S NEW IN CUTANEOUS ONCOLOGY

Palms Ballroom, inside the Sweetgrass Pavilion

(1.00 Credit Hour)

At the conclusion of this session, participants should be able to:

- 1) Identify the most current therapeutic options and management strategies for actinic keratoses, squamous cell cancer, and basal cell cancer;
- 2) Explain recent advances in research for the role of sentinel lymph node biopsy in the staging of patients with melanoma;
- 3) Explain management strategies for the treatment of the primary site of Merkel cell cancer.

*Moderator: Chrysalyne D. Schmults, MD, MSCE*

*Speakers:*

### Ingenol mebutate for actinic keratoses

*Dori Goldberg, MD*

### Managing the primary sites of Merkel cell cancer

*Kelly Harms, MD, PhD*

### Staging system for squamous cell cancer

*Thuzar M. Shin, MD, PhD*

### Vismodegib for basal cell cancer

*John M. Strasswimmer, MD, PhD*

### Deciphering MSLT-1 final publication

*John A. Zitelli, MD*

2:15 – 3:15 PM

## HOW WOULD YOU RECONSTRUCT IT?

Palms Ballroom, inside the Sweetgrass Pavilion

(1.00 Credit Hour)

At the conclusion of this session, participants should be able to:

- 1) Develop algorithms for reconstruction of wounds on the head and neck;
- 2) Select reconstruction strategies that balance the best functional and aesthetic outcomes with the least morbidity;
- 3) Predict potential complications with alternative reconstruction options.

*Moderator: Jeremy S. Bordeaux, MD, MPH*

*Speakers: Todd E. Holmes, MD; Juan-Carlos Martinez, MD; Fiona M. Zwald, MD, MRCPI*

3:15 – 3:30 PM

## BREAK

Palms Foyer, inside the Sweetgrass Pavilion

(CME Not offered)

3:30 – 4:30 PM

## CONTROVERSIES IN MOHS SURGERY AND ONCOLOGY

Palms Ballroom, inside the Sweetgrass Pavilion

(1.00 Credit Hour)

At the conclusion of this session, participants should be able to:

- 1) Recognize potential areas of treatment controversy in cutaneous oncology;
- 2) Describe the rationale for the management of the anticoagulants and implanted electronic devices during cutaneous surgery;
- 3) Determine appropriate treatment strategies for patients with tumors at high risk for local recurrence or metastasis.

*Moderator: Murad Alam, MD*

*Speakers:*

### Implanted electrical devices do not require modification of routine electrosurgery

*True: Daniel J. Pearce, MD*

*False: S. Tyler Hollmig, MD*

### Anticoagulants should never be stopped for Mohs surgery

*True: Jeremy S. Bordeaux, MD, MPH*

*False: Elizabeth M. Billingsley, MD*

### Adjuvant radiation therapy is useful for perineural SCC, even when Mohs margins are clear

*True: William G. Stebbins, MD*

*False: Chrysalyne Schmults, MD, MSCE*

### Frozen section biopsies are appropriate to diagnose non-melanoma skin cancers

*True: John A. Zitelli, MD*

*False: Valencia Thomas, MD*



## SCIENTIFIC PROGRAM – FRIDAY, NOVEMBER 14

4:30 – 5:30 PM

### RECONSTRUCTION STRATEGIES THAT I USED TO LIKE, BUT NOW LIKE ANOTHER ONE BETTER ♦

Palms Ballroom, inside the Sweetgrass Pavilion

(1.00 Credit Hour)

At the conclusion of this session, participants should be able to:

- 1) Develop a rationale to choose among reconstruction options for common surgical defects;
- 2) Describe techniques to refine flap repair and optimize patient outcomes;
- 3) Identify potential pitfalls in flap repair, and recognize the potential advantages of alternative repair options.

*Moderator: John G. Albertini, MD*

*Speakers: Leonard M. Dzubow, MD; Scott W. Fosko, MD; Steven M. Rotter, MD; Summer R. Youker, MD*

6:30 PM

### WELCOME RECEPTION

Grand Pavilion, just off the beach

(CME Not offered)

See below

## WELCOME RECEPTION

FRIDAY, NOVEMBER 14

6:30-8:30 pm  
Grand Pavilion

Join your colleagues for an evening of networking, hors d'oeuvres and panoramic ocean views. Don't miss it!

♦ Represents advanced expertise level course



# SCIENTIFIC PROGRAM – SATURDAY, NOVEMBER 15

8:00 – 9:00 AM

## MORBIDITY AND MORTALITY DUE TO PATHOLOGIC ERRORS IN MOHS

Palms Ballroom, inside the Sweetgrass Pavilion  
(1.00 Credit Hour)

At the conclusion of this session, participants should be able to:

- 1) Identify the causes of common pathologic errors during Mohs surgery;
- 2) Devise effective strategies in tissue processing to prevent pathologic errors during Mohs surgery;
- 3) Recognize patterns of perineural invasion and the utility of immunostains and paraffin sections to facilitate detection.

*Moderator: Keith L. Duffy, MD*

*Speakers:*

### Examples of false negative margins from suboptimal slides

*S. Tyler Hollmig, MD*

### Mimickers of squamous and basal cell cancer

*Deborah F. MacFarlane, MD, MPH*

### Examples of false positive margins resulting in unnecessary large defects

*Bradley G. Merritt, MD*

### Examples of infiltrative tumors that are difficult to detect

*Thuzar M. Shin, MD, PhD*

### Examples of perineural invasion that are difficult to detect

*Valencia D. Thomas, MD*

9:00 – 10:30 AM

## WHAT THE MOHS SURGEON MUST KNOW ABOUT TUMORS REQUIRING MULTIDISCIPLINARY CARE ♦

Palms Ballroom, inside the Sweetgrass Pavilion  
(1.50 Credit Hours)

At the conclusion of this session, participants should be able to:

- 1) Assemble multidisciplinary care with other specialists to improve outcomes for tumors at high risk for local recurrence or metastasis;
- 2) Determine appropriate imaging studies to stage patients with high-risk tumors;
- 3) Discuss how the caliber of the nerve invaded by tumor influences management decisions.

*Moderator: Marc D. Brown, MD*

*Speakers:*

### When a tumor is too deep for local anesthesia, how the Mohs surgeon can help direct margins for the definitive excision

*Barry Leshin, MD*

♦ Represents advanced expertise level course

### If a patient requires a SLNB, how can the Mohs surgeon help manage the primary tumor?

*Christopher J. Miller, MD*

### Surgical management of large nerve perineural invasion

*Jason G. Newman, MD*

### How to decide when and what imaging studies to stage a patient

*Thomas Stasko, MD*

10:30 – 11:00 AM

## BREAK

Palms Foyer, inside the Sweetgrass Pavilion  
(CME Not offered)

11:00 AM – 12:00 PM

## PRACTICE MANAGEMENT PEARLS

Palms Ballroom, inside the Sweetgrass Pavilion  
(1.00 Credit Hour)

At the conclusion of this session, participants should be able to:

- 1) Implement five practical management pearls at their own practice setting;
- 2) Effectively communicate with patients and the public the areas of expertise and emphasis of their practice in a manner that maximizes internal marketing opportunities;
- 3) Recall financial and practical ways to incentivize staff and increase an upbeat tempo and sense of optimism in their practice.

*Moderator: Christopher B. Harmon, MD*

*Speakers:*

### How I use my website to enhance my practice

*Timothy C. Flynn, MD*

### Best cost savers in my practice

*Leonard H. Goldberg, MD*

### Keys to building referrals

*Barry Leshin, MD*

### Incorporating cosmetics into daily practice

*Michel A. McDonald, MD*

### Keys to running a smooth front desk: a practice coordinator's perspective

*Mayange Mitchell*

### How I use technology to enhance patient care

*Girish S. Munavalli, MD, MHS*

### Employees I wished I would have let go sooner

*Steven M. Rotter, MD*

### My biggest mistake in practice management, and how I made it better

*Thomas Stasko, MD*



# SCIENTIFIC PROGRAM – SATURDAY, NOVEMBER 15

12:00 – 1:00 PM

## NETWORKING LUNCHEON

Palmetto Hall, adjacent to Sweetgrass Pavilion  
(CME Not offered)

1:00 – 2:30 PM

## TUMOR BOARD ♦

Palms Ballroom, inside the Sweetgrass Pavilion  
(1.50 Credit Hours)

At the conclusion of this session, participants should be able to:

- 1) Discuss the clinical presentation and management of non-melanoma skin cancer at high risk for local recurrence or metastasis;
- 2) Discuss the clinical presentation and management of melanocytic tumors at high risk for local recurrence or metastasis;
- 3) Devise a multidisciplinary care team for aggressive cutaneous tumors, including appropriate staging techniques, use of Mohs surgery, adjuvant therapies, and potential benefits of emerging therapies.

Moderator: Christopher J. Miller, MD

Speakers:

### High risk SCC of the head and neck

Michelle T. Nguyen, MD

### Incompletely biopsied melanoma that upstages

James R. DeBloom, MD

### Adnexal tumors with metastatic potential

Brian C. Leach, MD

### Deeply infiltrative tumor of neck

Joseph F. Sobanko, MD

2:30 – 3:30 PM

## CASE-BASED ANATOMY LESSONS OF SPECIALTY SITES ♦

Palms Ballroom, inside the Sweetgrass Pavilion  
(1.00 Credit Hours)

At the conclusion of this session, participants should be able to:

- 1) Determine sites where the superficial and deep soft tissue anatomy can be problematic during Mohs surgery;
- 2) Identify strategies for working in the canthi and in the deep tissues of the medial cheek;
- 3) Explain potential pitfalls of Mohs surgery for patients with tumors in specialty anatomic locations.

Moderator: Christopher J. Miller, MD

Speakers:

### Male genitalia

Nicholas B. Countryman, MD, MBA

### Preauricular area

Terry A. Day, MD

### Medial and lateral canthus tumors

Ann G. Neff, MD

### Deep hand/wrist tumors

Joseph F. Sobanko, MD

3:30 PM

Meeting adjourns for the day; enjoy Charleston

3:30 – 4:30 PM

OPTIONAL SESSIONS

### FINANCIAL PLANNING SUCCESS: OVERCOMING 3 CRITICAL ISSUES SPECIFIC TO MOHS SURGEONS

Palms Ballroom, inside the Sweetgrass Pavilion  
(CME Not offered)

\* Sign up at Registration Desk

This optional, interactive presentation will be led by Matthew Dodge and Tim Beldner from Larson Financial, one of the nation's largest wealth management firm catering exclusively to physicians and their families. Learn more about 3 critical issues impacting the finances of Mohs surgeons, along with great examples of mistakes and success stories. They will share practical solutions that can be used immediately to help you, your practice, and family create and protect wealth.

Their book, *DOCTOR'S EYES ONLY: Exclusive Strategies for Today's Doctors and Dentists*, is used as a financial guide that could help save physicians millions of dollars throughout their medical careers. The strategies and advice contained in the book are unique to the needs of high-income medical professionals.

### MEDIA TRAINING AND KEY MESSAGES

Boardwalk Inn Board Room

(CME Not offered)

\* Sign up at Registration Desk

This free, optional session led by Brett A. Kell, MSM, ACMS Communications Manager, will provide participants with:

- 1) Tips on interacting with print and television media in interview situations;
- 2) Key messages about the ACMS that can be used to support more specific responses;
- 3) Strategies for ensuring responses use key messages to proactively reinforce the ACMS mission, values and purpose.

When the instructional portion of this session ends, participants may take part in short, videotaped mock interviews from 4:15-4:30 pm to practice and review the strategies outlined during the session.

♦ Represents advanced expertise level course

# SCIENTIFIC PROGRAM – SUNDAY, NOVEMBER 16

8:00 – 9:30 AM

## COMMON COMPLICATIONS: CASES TO SHOW HOW I CAUSED, PREVENTED, & FIXED THEM ♦

Palms Ballroom, inside the Sweetgrass Pavilion  
(1.50 Credit Hours)

At the conclusion of this session, participants should be able to:

- 1) Describe the causes of common complications for Mohs surgery and reconstructions at particular anatomic locations;
- 2) Explain revision techniques for undesirable surgical outcomes;
- 3) Recognize the challenges of preserving and restoring contour and free margins during reconstruction of surgical defects on the central face.

Moderator: J. Ramsey Mellette, Jr., MD

Speakers:

### Ectropion and webbing of medial canthus

Jeremy S. Bordeaux, MD, MPH

### Reconstruction failure on lower legs

Galen H. Fisher, MD

### Pincushioning

Ian A. Maher, MD

### Interpolation Flaps

J. Ramsey Mellette Jr., MD

### Fat upper lip with reconstruction

J. Michael Wentzell, MD

9:30 – 9:45 AM

## BREAK

Palms Foyer, inside the Sweetgrass Pavilion  
(CME Not offered)

9:45 – 11:15 AM

## ISSUES THAT MAKE YOU LOOK THINGS UP

Palms Ballroom, inside the Sweetgrass Pavilion  
(1.50 Credit Hours)

At the conclusion of this session, participants should be able to

- 1) Recognize categories of patients who may require alteration of routine surgical practice;
- 2) Describe the management strategies for patients with medications that may affect surgical outcomes;
- 3) Discuss the impact of medications that Mohs surgeons prescribe on patient outcomes.

Moderator: Marta J. VanBeek, MD

Speakers:

### Immunosuppression and other medicines that increase skin cancer risk

Jennifer D. Bahner, MD

Antibiotics: drug-drug interactions, clostridium difficile risk; coverage by anatomic location

Mariah R. Brown, MD

### Infectious disease

John Cafardi, MD

### Pain management, including in codeine allergic patients

Bryan T. Carroll, MD, PhD

### Indications for antiviral prophylaxis in dermatologic surgery

Todd V. Cartee, MD

### Anesthetics: dosages, tumescent, overdoses reversal

Erica H. Lee, MD

### New anticoagulants

Rajiv Nijhawan, MD

### Electronic implanted devices, other than pacemakers and defibrillators

Daniel J. Pearce, MD

### Surgery in pregnant and breastfeeding patients

Adam Perry, MD

11:15 AM – 12:45 PM

## GET YOUR MOC HERE! OFFICE SAFETY

Palms Ballroom, inside the Sweetgrass Pavilion  
(Non-CME Session)

At the conclusion of this session, participants should be able to:

- 1) Assess and understand the key areas of how office based safety pertains to the practice of dermatology;
- 2) Integrate and apply the concepts of office based safety to improve office efficiency, safety, and satisfaction in the workplace of a dermatologic surgery practice;
- 3) Distinguish the most common as well as the most detrimental office based safety issues pertaining to procedural dermatology.

Moderator: Jonathan Olson, MD

Speakers: Vanessa C. Lichon, MD; Vineet Mishra, MD; Vishal A. Patel, MD

12:45 – 1:00 PM

## CLOSING REMARKS & ADJOURN

Palms Ballroom, inside the Sweetgrass Pavilion  
(Non-CME Session)

♦ Represents advanced expertise level course



## FACULTY INDEX

Alam, Murad.....	12	Martinez, Juan-Carlos.....	12
Albertini, John G.....	12, 13	McDonald, Michel A.....	14
Bahner, Jennifer D.....	16	Mellette, Jr., J. Ramsey.....	12, 16
Billingsley, Elizabeth M.....	12	Merritt, Bradley G.....	14
Bordeaux, Jeremy S.....	12, 16	Miller, Christopher J.....	14, 15
Brown, Marc D.....	14	Mishra, Vineet.....	16
Brown, Mariah R.....	16	Mitchell, Mayange.....	14
Cafardi, John.....	16	Munavalli, Girish S.....	14
Carroll, Bryan T.....	16	Neff, Ann G.....	15
Cartee, Todd V.....	16	Newman, Jason G.....	14
Countryman, Nicholas B.....	15	Nguyen, Michelle T.....	15
Day, Terry A.....	15	Nijhawan, Rajiv.....	16
DeBloom, Jr., James R.....	15	Olson, Jonathan.....	16
Duffy, Keith L.....	14	Patel, Vishal A.....	16
Dzubow, Leonard M.....	13	Pearce, Daniel J.....	12, 16
Fisher, Galen H.....	16	Perry, Adam.....	16
Flynn, Timothy C.....	14	Rotter, Steven M.....	13, 14
Fosko, Scott W.....	13	Schmults, Chrysalyne D.....	12
Goldberg, Dori.....	12	Shin, Thuzar M.....	12
Goldberg, Leonard H.....	14	Sobanko, Joseph F.....	15
Harmon, Christopher B.....	14	Stasko, Thomas.....	14
Harms, Kelly.....	12	Stebbins, William G.....	12
Holmes, Todd E.....	12	Strasswimmer, John M.....	12
Hollmig, S. Tyler.....	12, 14	Thomas, Valencia D.....	14
Kell, Brett A.....	15	VanBeek, Marta J.....	16
Leach, Brian C.....	15	Wentzell, J. Michael.....	16
Lee, Erica H.....	16	Youker, Summer R.....	13
Leshin, Barry.....	14	Zitelli, John A.....	12
Lichon, Vanessa C.....	16	Zwald, Fiona M.....	12
MacFarlane, Deborah F.....	14		
Maher, Ian A.....	16		



## Have Your Mohs Tech Participate in the Mohs Tech Quality Assurance (MTQA) Training Initiative

The MTQA Training Initiative is the only ACMS-approved program designed to help current Mohs technicians improve their skills and learn new techniques. By working one-on-one with an ACMS-approved MTQA trainer, your tech's training will be tailored to provide troubleshooting tips in the areas that he/she would like to learn about most. Each training session is typically 1-2 days and is set up to be convenient with the trainer's and the trainee's schedule. Upon completion of the training, the tech may claim up to 12 CEUs through the National Society for Histotechnology and will receive a completion certificate from ASMH.

For more information on participating in this training program visit [www.mohstech.org](http://www.mohstech.org) or contact the ASMH office at (414) 918-9813 or [info@mohstech.org](mailto:info@mohstech.org).



*Save the Date*



*Napa*  
CALIFORNIA  
ACMS  
2015 REGIONAL MEETING  
FRIDAY, NOVEMBER 13 -  
SUNDAY, NOVEMBER 15, 2015  
*Silverado Resort and Spa*

ACMS American College  
of Mohs Surgery

SAVE THE DATE



ORLANDO *florida*  
APRIL 28 - MAY 1, 2016 ROSEN SHINGLE CREEK





## NOTES









**Abstract Deadline:  
January 13, 2015**

**47<sup>TH</sup> ANNUAL MEETING**



**APRIL 30 - MAY 3, 2015  
MARRIOTT RIVERCENTER**

**ACMS** American College  
of Mohs Surgery

