



2016 ANNUAL MEETING

THURSDAY, APRIL 28 - SUNDAY, MAY 1, 2016

*Rosen Shingle Creek
Orlando, Florida*



Final Program

THE REVOLUTIONARY Q^S12 CRYOSTAT

Avantik Biogroup

The #1 Name in Mohs.

ELIMINATE CHATTER, VENETIAN BLIND & THICK/THIN

UP TO 75% LESS NOISE

ERGONOMICALLY DESIGNED

ADJUSTABLE LED LIGHTING

ULTRA SMOOTH HANDWHEEL OPERATION

PRECISION & ACCURACY

PERFECT SECTIONS



Dovetail Bladeholder



Perfect Sections



Peltier - Fast Freezing



UV Disinfection Option



The Mohs Laboratory Solution

Your laboratory... quick, efficient, easy.

The **Q^S12** and **Q^S12UV** have been the result of extensive research and development over the span of years. From bladeholder to microtome, cryobar to refrigeration... every aspect of the **Q^S12** and **Q^S12UV** is unsurpassed in quality and precision. *A Perfect Section...it's unmistakable!*

The Mohs Laboratory Performers



CALL TODAY TO SPEAK TO YOUR **MOHS LAB SPECIALIST** REGARDING ALL OF YOUR MOHS LAB NEEDS!

888.392.8411

www.avantik-us.com

 **AVANTIK**
BIOGROUP

A Business Unit of Belair Instrument Co.

LEVULAN[®] KERASTICK[®]

(aminolevulinic acid HCl)
for Topical Solution, 20%

+ BLU-U[®]

Blue Light Photodynamic Therapy
Illuminator Model 4170



VISIT
OUR
BOOTH

DUSA[®], Levulan[®], Kerastick[®], and BLU-U[®] are registered trademarks of DUSA Pharmaceuticals, Inc.[®], a Sun Pharma company.
© 2016, DUSA Pharmaceuticals, Inc. All Rights Reserved

DUSA[®]
a SUN PHARMA company


**SUN
PHARMA**

MKT-1792AW Rev A

Dermabond Advanced

Skin closure for excellent outcomes

Strengthens

When used in addition to sutures, DERMABOND ADVANCED® Topical Skin Adhesive was shown ex vivo to add 75% more strength to the wound closure than sutures alone.¹

Inhibits bacteria

Demonstrated in vitro inhibition of gram-positive bacteria (MRSA and MRSE) and gram-negative bacteria (*E coli*).^{1*}

Provides a microbial barrier

Provides a flexible microbial barrier with 99% protection in vitro for 72 hours against organisms commonly responsible for surgical site infections.^{2†}

**For more information,
contact your representative
or call 1-877-ETHICON.**



*Clinical significance is unknown.

†*Staphylococcus epidermidis*, *Staphylococcus aureus*, *Escherichia coli*, *Enterococcus faecium*, *Pseudomonas aeruginosa*.

For complete indications, contraindications, warnings, precautions, and adverse reactions, please reference full package insert.

1. Data on file. Ethicon, Inc.: Dermabond Advanced Claims Matrix.

2. Bhende S, Rothenburger S, Spangler DJ, Dito M. In vitro assessment of microbial barrier properties of Dermabond Topical Skin Adhesive. *Surg Infect (Larchmt)*. 2002;3(3):251-257.

ETHICON
PART OF THE *Johnson & Johnson* FAMILY OF COMPANIES

Shaping
the future
of surgery

© 2015 Ethicon US, LLC. 029680-150213

Table of Contents

ACMS Board of Directors	2
ACMS Committees and Task Forces – 2015-16	3
Welcome from the President and Scientific Program Committee Chair	4
Program at a Glance	6
General Meeting Information	11
CME Information and Learning Objectives.....	13
Rosen Shingle Creek Map.....	14
Hotel & Travel Information	15
Guest Speaker Biographies.....	16
Invited Faculty and Guest Speakers.....	18
Thank You to the 2016 Annual Meeting Sponsors	20
Rosen Shingle Creek Floor Plan.....	21
Scientific Program Schedule	23
Thursday, April 28.....	23
Friday, April 29.....	27
Saturday, April 30	30
Sunday, May 1	34
Poster Presentation List.....	35
Exhibit Hall Floor Plan.....	39
Exhibitor Listing	40
Speaker Index.....	47

© 2015-2016

American College of Mohs Surgery

No part of this publication may be reproduced without the prior written permission of the ACMS.

Photos courtesy of iStock and the Rosen Shingle Creek Hotel.



American College of Mohs Surgery

555 East Wells Street, Suite 1100
Milwaukee, WI 53202

Phone: (414) 347-1103
(800) 500-7224

Fax: (414) 276-2146

Email: info@mohscollege.org

Website: www.MohsCollege.org
www.SkinCancerMohsSurgery.org

ACMS Board of Directors

2015-2016 Officers



John G. Albertini, MD, FACMS
President



Thomas Stasko, MD, FACMS
Vice President



Allison T. Vidimos, MD, RPh,
FACMS
Secretary/Treasurer



J. Ramsey Mellette, Jr., MD,
FACMS
Immediate Past President

2015-2016 Board of Directors



Christopher J. Arpey, MD,
FACMS



Elizabeth M. Billingsley,
MD, FACMS



Timothy C. Flynn, MD,
FACMS



Tatyana R. Humphreys, MD,
FACMS



Brent R. Moody, MD,
FACMS



Emily Newsom, MD
Fellow Board Observer,
non-voting



Chrysalyne D. Schmults,
MD, MSCE, FACMS



Summer R. Youker, MD,
FACMS



John A. Zitelli, MD, FACMS,
Board Historian,
non-voting



David M. Zloty, MD, FRCP,
FACMS



Fiona O. Zwald, MD, MRCPI,
FACMS

Scientific Program Committee

Christopher J. Miller, MD, FACMS, Chair
Michel A. McDonald, MD, FACMS, Co-Chair
John G. Albertini, MD, FACMS
Thomas Stasko, MD, FACMS
Allison T. Vidimos, MD, RPh, FACMS
Jerry D. Brewer, MD, FACMS, Ex-Officio

ACMS Staff

Rebecca Brandt, CAE, Executive Director
Brett Kell, MSM, Communications Manager
Tammy O'Connell, Administrative Manager, National Registry and Quality
Mario Ortiz, Meetings Manager
Mary Randall, Membership Manager
Susan Sadowski, Education Manager
Emily Thurow, Administrative Coordinator

ACMS Committees and Task Forces – 2015-16

Bylaws Committee

Whitney D. Tope, MPhil, MD, FACMS, Chair

CAP Review Task Force

Glenn D. Goldman, MD, FACMS, Chair

Centers for Excellence Task Force

Thomas Stasko, MD, FACMS, Chair

CME & Education Committee

Jeremy S. Bordeaux, MD, MPH, FACMS, Chair

Communications, Public Relations, and Website Committee

Thomas E. Rohrer, MD, FACMS, Chair

Diagnostic Quality Control & Teaching Library Committee

Sumaira Z. Aasi, MD, FACMS, Chair

Ethics Committee

Phillip M. Williford, MD, FACMS, Chair

Finance and Investment Committee

George J. Hruza, MD, FACMS, Chair

Frederic E. Mohs Award Committee

Ronald L. Moy, MD, FACMS, Chair

Grievance Committee

Randall K. Roenigk, MD, FACMS, Chair

Membership Committee

Thomas Stasko, MD, FACMS, Chair

National Registry and Outcomes Committee

Oliver J. Wisco, DO, FACMS, Chair

Newsletter Committee

David P. Clark, MD, FACMS, Chair

Nominating Committee

Brett M. Coldiron, MD, FACP, FACMS, Chair

Private Sector Task Force

Howard W. Rogers, MD, PhD, FACMS

Public Policy Committee

Brent R. Moody, MD, FACMS, Chair

Regional Meeting Program Committee (2015)

Michel A. McDonald, MD, FACMS, Chair

Scientific Program Committee

Christopher J. Miller, MD, FACMS, Chair

Slide Quality Review Committee

Frederick S. Fish, III, MD, FACMS, Chair

Tromovitch Award Committee

Hugh M. Gloster, Jr., MD, FACMS, Chair

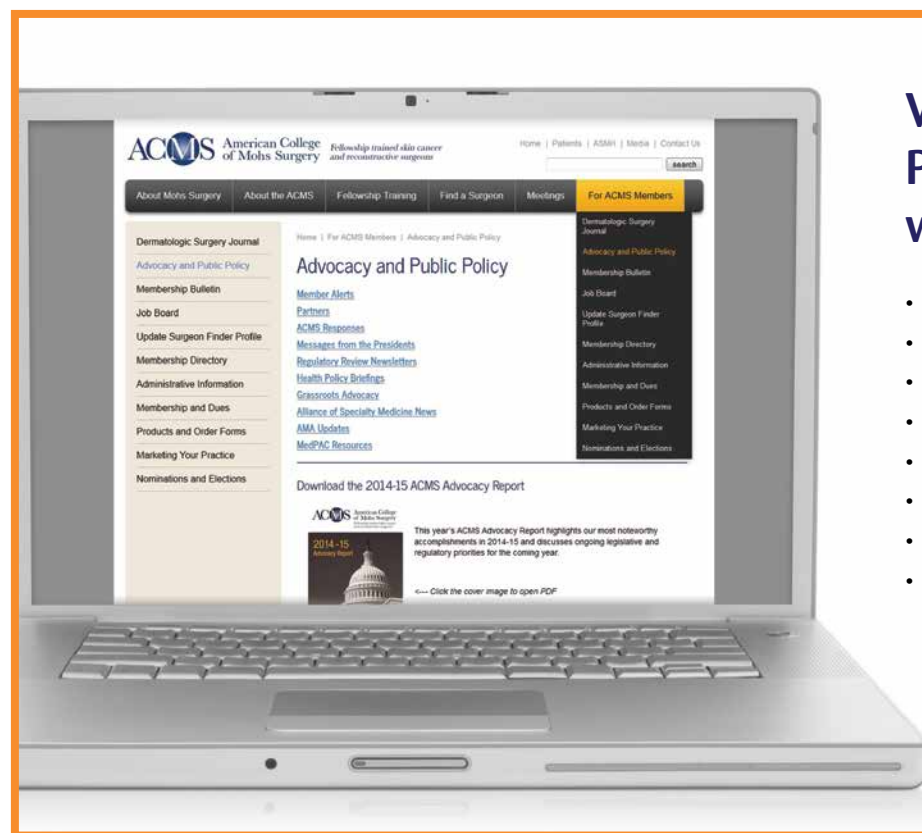
Volunteerism/Pro Bono Task Force

Christopher B. Harmon, MD, FACMS, Chair

Site Inspection & Slide Review Board, LLC (An ACMS subsidiary)

Fellowship Training Committee

Christopher J. Arpey, MD, FACMS, Chair



Visit the Advocacy & Public Policy page of www.MohsCollege.org

- Member Alerts
- ACMS Responses
- Messages from the Presidents
- Regulatory Review Newsletters
- Health Policy Briefings
- AMA Updates
- MedPAC Resources
- Alliance of Specialty Medicine Resources

Welcome from the President and Scientific Program Committee Chair



Dear ACMS Members and Colleagues,
On behalf of the Board of Directors, it is my honor to welcome you to Orlando for the 48th Annual Meeting of the American College of Mohs Surgery.

The Scientific Program Committee has devoted significant time and energy to crafting a program worthy of our participation. Of particular note are our guest speakers, Drs. Benjamin Chang, Stephen Kovach, Rosalie Elenitsas, Peter Toensing and Wendy Lee, whose collective expertise in the areas of plastic surgery, hand surgery and transplantation, dermatopathology, ophthalmic plastic and reconstructive surgery, and melanoma add an extremely valuable dimension to our meeting.

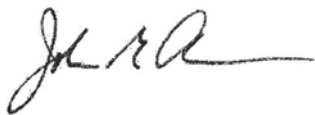
Our keynote speaker is Martin Makary, MD, MPH, FACS, who last year was named one of America's 20 Most Influential People in Health Care by Health Leaders Magazine. A surgical oncologist at Johns Hopkins, best-selling author, and creator of The Surgery Checklist described in the book *The Checklist Manifesto*, his expertise and advocacy for physicians will provide important perspective. Dr. Makary inspired an *Improving Wisely* collaboration with the Mohs College that will debut soon.

I want to offer sincere thanks to Dr. Christopher Miller, chair of the Scientific Program Committee, who led the development of a comprehensive program that truly includes something for everyone. Thanks are also due to Drs. Michel McDonald, Tom Stasko, Allison Vidimos and Jerry Brewer, as well as Jeremy Bordeaux and his CME and Education Committee, for their time and contributions in preparing this outstanding content. I would be remiss if I didn't also acknowledge the hard work of the ACMS staff, who see to all the details that make the Annual Meeting such a special event for our valued members.

I believe gatherings like this one are vital. We have the opportunity to connect, collaborate and inspire one another in meaningful ways that help grow our knowledge base and empower us to see beyond the silos of our daily practices. We learn new science, new techniques, and new faces, all in service to our patients and this fine organization.

Thank you for being here, and for all you do for our specialty.

Sincerely,



John G. Albertini, MD, FACMS
2015-16 ACMS President



Dear Colleagues,
Welcome to the 2016 ACMS Annual Meeting!

The Scientific Program Committee and many other members of the ACMS have carefully designed a curriculum to meet the needs of all our members.

The Morning Mini-Sessions allow you to tailor your curriculum to your particular interests in reconstruction, cutaneous oncology, professional development, or adjunctive treatments to Mohs surgery.

We have expanded opportunities for members to present original research. We hope you'll enjoy the new "Rapid Pearls" abstract session, which features two-minute tips to improve Mohs surgery technique, frozen section pathology, reconstructive surgery, or practice management.

Our guest speakers will broaden our perspectives by addressing challenges in dermatopathology, periocular reconstruction, and surgery on the hands and feet. We have worked closely with them to develop content relevant to all of us.

The Annual Business Meeting and the Keynote Address by author and surgical oncologist Dr. Martin Makary will update all of us on pressing issues for the ACMS and future practice of medicine.

The plenary sessions feature many practical topics on reconstruction, cutaneous oncology, Mohs surgery and laboratory techniques, and practice management. Look for a lot of videos for the reconstruction sessions.

I would like to thank our ACMS President, John Albertini, the Scientific Program Committee, and numerous colleagues who have helped design this year's meeting. I extend a special thanks to the ACMS staff, particularly Susan Sadowski, whose administrative skills set a high bar for excellence.

Enjoy the meeting and your time in Orlando!

Sincerely,



Christopher J. Miller, MD, FACMS
2016 Scientific Program Committee Chair

Mohs Technician Quality Assurance (MTQA) Training Initiative



Help Your Mohs Tech Improve His/Her Skills

The MTQA Training Initiative is the only ACMS-approved training program designed to help current Mohs technicians improve their skills and learn new techniques. By working one-on-one with an ACMS-approved MTQA trainer, your tech's training will be tailored to provide troubleshooting tips in the areas he/she would like to learn about most.

This year the MTQA Training Initiative is offering a new, customized, hands-on training program October 6-7, 2016 at the Avantik Training Campus in Springfield, New Jersey. Upon completion, trainees will be able to claim CEUs through the National Society for Histotechnology and will receive a certificate of completion from the ASMH/ACMS.

For more information, visit www.mohstech.org or contact the ASMH office at (414) 918-9813 or info@mohstech.org.

www.mohstech.org



JOB POSTING BULLETIN BOARD

A bulletin board is stationed in the ACMS booth in the Exhibit Hall for members who wish to post job openings for Mohs surgeons or histotechs.

Please note: Postings should be no larger than 8.5 x 11 and include a detailed position description, email address, and phone number.

Orlando Visitor Attractions

Go to the Event Information section of the meeting app for hyperlinks to the following:

- Magic Kingdom Park
- Epcot
- Disney's Animal Kingdom Theme Park
- Disney's Hollywood Studios
- Universal Studios Florida
- Universal's Islands of Adventure
- Discovery Cove
- Legoland Florida Resort
- SeaWorld Orlando

More at www.visitorlando.com

Program at a Glance

Wednesday, April 27		
1:00 – 6:00 pm	Registration	Gatlin Registration 1
1:00 – 6:00 pm	Speaker Ready Room	St. John's 27 (Upper Level)
Thursday, April 28		
6:30 am – 5:00 pm	Registration	Gatlin Registration 1
6:30 am – 5:00 pm	Speaker Ready Room	St. John's 27 (Upper Level)
7:00 – 8:15 am	Concurrent Morning Mini-Sessions:	St. John's 25 (Upper Level)
	<i>103.1 How to Author and Review Manuscripts for Publication: Lessons from the Editors and Seasoned Authors (1.25 Credit Hours)</i>	
	<i>103.2 Advanced Lip Reconstruction: Step-by-Step Instructions for Challenging Single-stage and Multiple-Staged Reconstructions ♦ (1.25 Credit Hours)</i>	Gatlin A-1
	<i>103.3 Bilobed and Trilobed Flaps for Nasal and Extranasal Applications (1.25 Credit Hours)</i>	Gatlin A-2
	<i>103.4 Merkel Cell Cancer ♦ (1.25 Credit Hours)</i>	Gatlin A-3
	<i>103.5 Developing and Managing a High-Quality Frozen Section Mohs Laboratory (1.25 Credit Hours)</i>	Gatlin A-4
8:30 – 9:00 am	Welcome & AAD Update (0.50 Credit Hour)	Gatlin B
9:00 – 9:45 am	Literature Review: Editors' Picks of Top Articles from the Major Dermatology Journals (0.75 Credit Hour)	Gatlin B
9:30 – 7:30 pm	Exhibit Hall Open	Gatlin C
9:45 – 10:00 am	Break (CME Not offered)	Gatlin C
10:00 – 11:00 am	Tromovitch Award Abstract Session (1.00 Credit Hour)	Gatlin B
11:00 am – 12:00 pm	Strategies to Achieve Perfect Mohs Frozen Sections (1.00 Credit Hour)	Gatlin B
12:00 – 1:00 pm	Networking Lunch (provided) (CME Not offered)	Gatlin C
1:00 – 2:00 pm	Practical Solutions for Common Reconstruction Challenges (1.00 Credit Hour)	Gatlin B
2:00 – 2:45 pm	Update on Melanoma (0.75 Credit Hour)	Gatlin B
2:45 – 3:00 pm	Update on Merkel Cell Cancer (0.25 Credit Hour)	Gatlin B
3:00 – 3:15 pm	Break (CME Not offered)	Gatlin C
3:15 – 4:15 pm	Clinical Pearls Abstract Session (1.00 Credit Hour)	Gatlin B
4:15 – 5:15 pm	Strategies to Enhance the Patient Experience from Pre-Op to Post-Op (1.00 Credit Hour)	Gatlin B
5:30 – 7:30 pm	Exhibit Hall Grand Opening & Welcome Reception (CME Not offered)	Gatlin C

♦ Represents advanced expertise level course

Program at a Glance

Friday, April 29		
6:30 am – 5:00 pm	Registration	Gatlin Registration 1
6:30 am – 5:00 pm	Speaker Ready Room	St. John's 27 (Upper Level)
7:00 – 8:15 am	Concurrent Morning Mini-Sessions:	
	202.1 How You Can Get Involved in the ACMS: Lessons from Past and Future Presidents (Free session; registration required) (1.25 Credit Hours)	St. John's 25 (Upper Level)
	202.2 Nasal Flaps with 3 or More Stages: Step-by-Step Strategies to Incorporate into Your Own Practice ♦ (1.25 Credit Hours)	Gatlin A-1
	202.3 Surgical Refinement of Scars: Contouring Flaps, Z-plasties, and Correcting Free Margin Position (1.25 Credit Hours)	Gatlin A-2
	202.4 Melanoma: Controversies in Consensus Guidelines (1.25 Credit Hours)	Gatlin A-3
	202.5 Treatment Alternatives When Mohs Surgery is Not the Best Option (1.25 Credit Hours)	Gatlin A-4
8:30 – 9:30 am	Scientific Abstract Session (1.00 Credit Hour)	Gatlin B
9:30 – 10:00 am	Patient Populations for Whom History Matters and How I Modify My Treatment (0.50 Credit Hour)	Gatlin B
10:00 – 10:30 am	Office Safety Protocols (0.50 Credit Hour)	Gatlin B
10:00 am – 6:30 pm	Exhibit Hall Open	Gatlin C
10:30 – 10:45 am	Break (CME Not offered)	Gatlin C
10:45 – 11:30 am	Case-Based Coding and Billing (0.75 Credit Hour)	Gatlin B
11:30 am – 12:15 pm	Economic Profiling: How Insurers Measure the Cost-Effectiveness of Mohs Surgeons (0.75 Credit Hour) Guest Speaker: Peter Toensing, MD	Gatlin B
12:15 – 2:00 pm	ACMS Annual Business Meeting & Lunch (CME Not offered)	Gatlin B
	Non-members and guests: lunch on your own; visit the Exhibit Hall	Gatlin C
2:00 – 2:15 pm	Break (CME Not offered)	Gatlin C
2:15 – 3:00 pm	Partner With Your Dermatopathologist to Optimize Patient Care and to Avoid Pitfalls (0.75 Credit Hour) Guest Speaker: Rosalie Elenitsas, MD	Gatlin B
3:00 – 4:00 pm	Pathology of Specialty Tumors: DFSP, Extramammary Paget's Disease, AFX, and Sebaceous Tumors ♦ (1.00 Credit Hour)	Gatlin B
	Guest Panelist: Rosalie Elenitsas, MD	Gatlin B
4:00– 4:15 pm	Break (CME Not offered)	Gatlin C

♦ Represents advanced expertise level course

Program at a Glance

Friday, April 29

4:15 – 5:15 pm	Reconstruction Videos of Four Workhorse Flaps: Rhombic, Bilobed, Dorsal Nasal Rotation, and Nasolabial Transposition Flaps (1.00 Credit Hour)	Gatlin B
5:15 – 5:30 pm	Opportunities for International Volunteerism for Mohs Surgeons: Blade & Light International (Non-CME Session)	Gatlin B

Special Events

Thursday, April 28

5:30 – 7:30 pm: Exhibit Hall Grand Opening & Welcome Reception — Gatlin C

Don't miss this chance to relax and unwind with colleagues. Hors d'oeuvres and beverages will be provided for your enjoyment.

Friday, April 29

12:00 – 1:00 pm: VA Mohs Surgeons Meeting — St. John's 26 (Upper Level)

An informal meeting of Mohs surgeons working in the VA system, or those interested in learning more about the VA. Please pick up lunch at the Exhibit Hall and join us for a collegial networking session.

12:15 – 2:00 pm: ACMS Annual Business Meeting & Lunch — Gatlin B

ACMS members are encouraged to attend the annual membership business meeting and lunch. This important meeting brings members up-to-date on issues of significance. The winners of the prestigious Frederic E. Mohs Award and Distinguished Service Award will be announced.

5:30 – 6:30 pm: Blade & Light International Reception — Butler & Butler Balcony

Come mingle with colleagues and raise money for a good cause. Blade and Light International is hosting a social mixer and fundraiser for its volunteer Mohs surgery abroad. Learn about future trips and how to get involved, catch up with friends and make new ones.

7:00 – 8:00 pm: Association of Professors of Dermatology, Dermatologic Surgery Section — St. John's 26 (Upper Level)

Join colleagues for networking, committee updates, and informal presentations.

Saturday, April 30

12:00 – 1:00 pm: Women's Dermatologic Society Luncheon — Butler & Butler Balcony

Open to all WDS Members & ACMS Annual Meeting Attendees. This luncheon provides an opportunity for WDS members and others to network. Lunch will be served.

6:45 – 7:30 pm: Reception Introducing Fellows-in-Training — Butler & Butler Balcony

Exclusively for ACMS & ACGME program directors and current fellows-in-training, this event offers the opportunity to network and socialize with each other and congratulate the fellows-in-training on their upcoming graduation. The winner of the Tromovitch Award will be announced and hors d'oeuvres and beverages will be provided. Fellows-in-training and program directors should come prepared to introduce themselves to the group.

Sunday, May 1

7:00 – 8:15 am: Past Presidents Breakfast (by invitation only) — St. John's 26 (Upper Level)

11:00 am – 12:00 pm (concurrent): MOC Self-Assessment Sessions: Office Safety, Procedural Dermatology, & Skin Cancer — Gatlin A-1; Gatlin A-2; Gatlin B

The ACMS is offering MOC Self-Assessments, which satisfy a portion of the self-assessment module of Component 2 in Maintenance of Certification with the American Board of Dermatology (ABD). They will run concurrently covering the topics of office safety, procedural dermatology, and skin cancer. Participants must complete the MOC Credit Form, available in the session on Sunday and return it to the ACMS Registration Desk. You must also update your ABD MOC tables to reflect the credits available for the session you attend. Note: If you claimed MOC credits for 'MOC: Office Safety,' 'MOC: Procedural Dermatology' and/or 'MOC: Skin Cancer' at a previous ACMS Annual or Regional Meeting, you cannot claim MOC credits for 'MOC: Office Safety,' 'MOC: Procedural Dermatology,' and/or 'MOC: Skin Cancer' at the 2016 Annual Meeting.

♦ Represents advanced expertise level course

Program at a Glance

Saturday, April 30		
6:30 am – 4:00 pm	Registration	Gatlin Registration 1
6:30 am – 4:00 pm	Speaker Ready Room	St. John's 27 (Upper Level)
7:00 – 8:15 am	Concurrent Morning Mini-Sessions:	
	302.1 <i>Elements of a Fulfilling Career in Mohs Surgery: Lessons from the AAD Leadership Academy</i> (1.25 Credit Hours)	St. John's 25 (Upper Level)
	302.2 <i>Single- and Multi-Staged Reconstruction of the Ear: Principles to Incorporate into Your Practice</i> ♦ (1.25 Credit Hours)	Gatlin A-1
	302.3 <i>'Outside-of-the-Box' Variations of Common Reconstructions</i> (1.25 Credit Hours)	Gatlin A-2
	302.4 <i>Morbidity and Mortality: Lessons in Oncology from Spindle Cell and Other Challenging Tumors</i> (1.25 Credit Hours)	Gatlin A-3
	302.5 <i>Vein Surgery and the Basics of Phlebology</i> (1.25 Credit Hours)	Gatlin A-4
8:00 am – 2:00 pm	Exhibit Hall Open	Gatlin C
8:30 – 9:15 am	Mohs Surgery of the Nail Unit ♦ (0.75 Credit Hour) Guest Panelists: Benjamin Chang, MD, FACS & Stephen J. Kovach, III, MD	Gatlin B
9:15 – 9:45 am	Essential Principles to Optimize Surgical Outcomes of the Hand ♦ (0.50 Credit Hour) Guest Speaker: Benjamin Chang, MD, FACS Guest Panelist: Stephen J. Kovach, III, MD	Gatlin B
9:45 – 10:15 am	Essential Principles to Optimize Surgical Outcomes of the Foot ♦ (0.50 Credit Hour) Guest Speaker: Stephen J. Kovach, III, MD Guest Panelist: Benjamin Chang, MD, FACS	Gatlin B
10:15 – 10:30 am	Break (CME Not offered)	Gatlin C
10:30 – 11:00 am	Outcome Measures for Mohs Surgery: Moving Beyond Recurrence Rate and Tissue-Sparing (0.50 Credit Hour)	Gatlin B
11:00 am – 12:00 pm	Keynote Address: Art, Assassination, and America: The Physician Movement for Better Health Care Martin Makary, MD, MPH, FACS (1.00 Credit Hour)	Gatlin B
12:00 – 1:00 pm	Lunch in the Exhibit Hall (CME Not offered)	Gatlin C
1:00 – 1:30 pm	Eyelid Essentials for the Mohs Surgeon: Gross and Microscopic Anatomy (0.50 Credit Hour) Guest Panelist: Wendy W. Lee, MD	Gatlin B
1:30 – 2:30 pm	Periocular Reconstruction ♦ (1.00 Credit Hour) Guest Speaker: Wendy W. Lee, MD	Gatlin B
2:30 – 2:45 pm	Break (CME Not offered)	Gatlin C
2:45 – 3:30 pm	Update on High-Risk Squamous and Basal Cell Cancers ♦ (0.75 Credit Hour)	Gatlin B
3:30 – 4:00 pm	Top Topics in Transplant Cutaneous Oncology from ITSCC (0.50 Credit Hour)	Gatlin B

♦ Represents advanced expertise level course

Program at a Glance

Saturday, April 30

4:00 – 5:00 pm	Rapid Pearls Abstract Session (1.00 Credit Hour)	Gatlin B
5:15 – 6:45 pm	Program Directors' Session (Non-CME Session)	St. John's 26 (Upper Level)
6:45 – 7:30 pm	Fellows-in-Training Reception (CME Not offered)	Butler & Butler Balcony

Sunday, May 1

7:00 – 10:00 am	Speaker Ready Room	St. John's 27 (Upper Level)
7:00 – 8:15 am	Past Presidents Breakfast (by invitation only)	St. John's 26 (Upper Level)
7:30 – 8:30 am	Digital Diagnostic Quality Control Exam Review (1.00 Credit Hour)	Gatlin B
8:30 – 8:45 am	Fellow-in-Training Clinicopathologic Case Competition Award Winner (0.25 Credit Hour)	Gatlin B
8:45 – 9:45 am	Variations in Mohs Technique: Pros and Cons (1.00 Credit Hour)	Gatlin B
9:45 – 10:00 am	Break (CME Not offered)	Gatlin B
10:00 – 11:00 am	Reconstruction Videos of Interpolation Flaps ♦ (1.00 Credit Hour)	Gatlin B
11:00 am – 12:00 pm	Concurrent MOC Sessions: MOC Self-Assessment: Office Safety (Non-CME Session) —or— MOC Self-Assessment: Skin Cancer (Non-CME Session) —or— MOC Self-Assessment: Procedural Dermatology (Non-CME Session)	Gatlin A-1
		Gatlin A-2
		Gatlin B
12:00 pm	Meeting Adjourned	

Digital Diagnostic Quality Control Exam

The Diagnostic Quality Control Exam is entirely online. This allows for more flexibility to review the slides at the meeting, and allows completion of the exam before and after meeting. Instructions for accessing the digital DQC Exam will be sent via the email address used for registration prior to the Annual Meeting. Access to the Diagnostic Quality Control Exam is \$50 for ACMS members and free to fellows-in-training. Only ACMS members who register for the exam and complete it online will receive a certificate. Certificates are mailed approximately 4-6 weeks after the meeting. CME credit will not be offered for taking the digital Diagnostic Quality Control Exam.

Professional Headshots

Available FREE to all meeting attendees (optional)



On Saturday, April 30 from 12:00-2:00 pm in the Exhibit Hall, professional headshots will be taken by our photographer. Images will be sent electronically following the meeting for personal use. All photos will be taken on a first-come, first-served basis until 2:00 pm. Because of high demand at last year's meeting, there will be two photographers taking photos.

Whitelist info@mohscollege.org

To ensure you receive important communications from the ACMS including information regarding the Annual Meeting, messages from the President, The Cutting Edge newsletter, member surveys and more, add info@mohscollege.org to the Safe Senders list in your email account. If you think you may not have received messages from the ACMS, check your Spam or Junk Mail folder right away!



♦ Represents advanced expertise level course

General Meeting Information

On-Site Registration

The registration desk will be open at the Rosen Shingle Creek on the following days and times (subject to change):

Wednesday, April 27:	1:00 – 6:00 pm
Thursday, April 28:	6:30 am – 5:00 pm
Friday, April 29:	6:30 am – 5:00 pm
Saturday, April 30:	6:30 am – 4:00 pm

Shuttle Schedule

Shuttles between the DoubleTree by Hilton Orlando at SeaWorld and the Rosen Shingle Creek will run in a continuous loop, starting and ending according to the schedule times below.

- Pick up from the DoubleTree will be by the hour (every 60 minutes)
- Pick up from the Rosen Shingle Creek will be by the half hour (every 30 minutes)
- Check app, holding slides, or Registration Desk for shuttle pick-up/drop-off points

Wednesday, April 27:

Pick up from DoubleTree at **7:00 AM (Start)** and drop at Rosen Shingle Creek

Pick up from Rosen Shingle Creek **5:30 PM (End)** and drop at DoubleTree

Thursday, April 28:

Pick up from DoubleTree at **6:00 AM (Start)** and drop at Rosen Shingle Creek

Pick up from Rosen Shingle Creek **7:30 PM (End)** and drop at DoubleTree

Friday, April 29:

Pick up from DoubleTree at **6:00 AM (Start)** and drop at Rosen Shingle Creek

Pick up from Rosen Shingle Creek **7:30 PM (End)** and drop at DoubleTree

Saturday, April 30:

Pick up from DoubleTree at **6:00 AM (Start)** and drop at Rosen Shingle Creek

Pick up from Rosen Shingle Creek **7:30 PM (End)** and drop at DoubleTree

Sunday, May 1:

Pick up from DoubleTree at **7:00 AM (Start)** and drop at Rosen Shingle Creek

Pick up from Rosen Shingle Creek at **12:15 PM (End)** and drop at DoubleTree

Times are subject to change. Any schedule changes will be shared via the Annual Meeting mobile app. See p.12 for details.

Photography and Recording Policy

Photography or video or audio recording of sessions, materials presented in session, or exhibits without express written permission from the ACMS is strictly prohibited. Any photos, video or audio taken by or on behalf of the ACMS of the meeting activities and attendees shall be property of the ACMS.

There will be a professional photographer onsite documenting the meeting and social events. By attending the meeting, you agree to be photographed. Photos may be used in future promotional materials, ACMS publications, websites and social media, or other formats controlled by the ACMS.

Use of Mobile Devices

Please ensure that mobile phones, pagers or other electronic devices are silenced or turned off during all sessions.

Lost & Found

Please notify staff at the ACMS Registration Desk if you have lost or found an item during the course of the meeting.

Lactation Room

Breastfeeding mothers have use of a private room, Suwannee Registration Desk, with a table, chairs and a refrigerator. The key is available at the Registration Desk.

Special Needs

The ACMS wishes to ensure that no individual with a disability is excluded, denied services, segregated, or otherwise treated differently than other individuals because of auxiliary aids and/or service(s). If you need an auxiliary aid or service(s) identified in the Americans with Disabilities Act, or if you have any health issues for which you may require special accommodations or assistance, please notify the ACMS staff at the Registration Desk.



Exhibit Hall Grand Opening & Welcome Reception

Thursday, April 28 • 5:30–7:30 pm

Exhibit Hall – Gatlin C

Don't miss this chance to relax and unwind with colleagues. Hors d'oeuvres and beverages will be provided for your enjoyment.

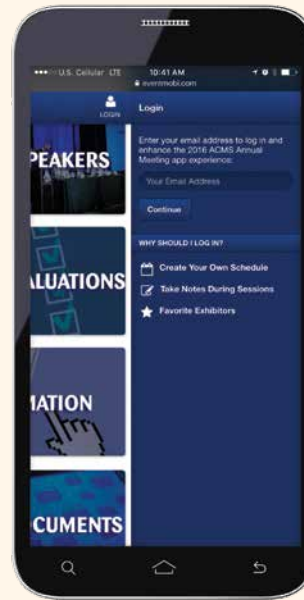
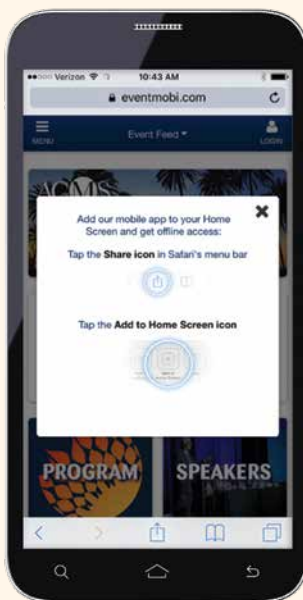
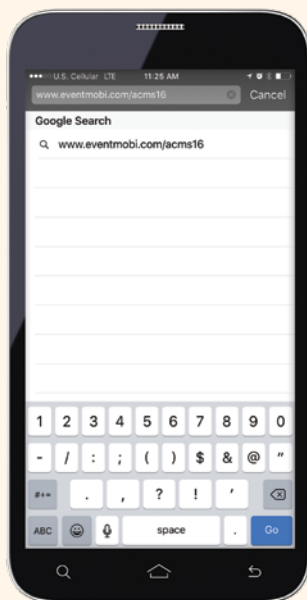
Download the Meeting App!

www.eventmobi.com/acms16

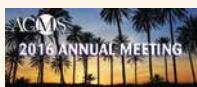
The app is web-based—no need to download it from an app store. It's optimized for all devices—including laptops, tablets and phones—and across mobile platforms like iOS, Android, and Windows. Receive real-time notifications, respond to polls, and more via the Activity Feed, and use the email you registered with to sign in and easily create a custom schedule with the sessions you plan to attend.

Get Started

1. Go to www.eventmobi.com/acms16
2. Follow on-screen instructions to add app icon to your home screen
3. Tap Login at upper right. Enter the email address you used to register for the meeting; this allows full use of all features.



Features



Links to meeting website, ACMS websites & more



See a daily agenda and tap for full details, speakers, handouts & more



View faculty and panelists, as well as guest speaker bios



View a listing of exhibitors by name or booth location



Respond to in-session polls, ask speakers questions, complete event evaluations



WiFi instructions, special event details, shuttle bus schedule, dining & more



Find attendees, edit your profile, connect with others via 1-1 or group chat



Handouts, slide decks & other information shared by speakers



Hotel, meeting space & Exhibit Hall floor plans



Share your experience via Facebook, Twitter & LinkedIn right from the app

CME Information and Learning Objectives

Accreditation Statement

This activity has been planned and implemented in accordance with the Essential Areas and Policies of the Accreditation Council for Continuing Medical Education (ACCME) through the sponsorship of the American College of Mohs Surgery (ACMS). ACMS is accredited by the ACCME to provide continuing medical education for physicians.

Credit Designation Statement

The ACMS designates this live activity for a maximum of 27.50 *AMA PRA Category 1 Credit(s)*[™]. Physicians should claim only the credit commensurate with the extent of their participation in the activity.

Physician Assistant Credit

The American Academy of Physician Assistants accepts *AMA PRA Category 1 Credit(s)*[™] from organizations accredited by the ACCME. Physician Assistants attending the Annual Meeting can submit certificates or transcripts showing how many physician CME credits were offered for an activity to the American Association of Physician Assistants and get them “converted” to PA CME credit. The AAPA also grants and counts *AMA PRA Category 1 Credit(s)*[™], but those are specifically for PAs and have to come from a provider accredited by the AAPA. Both groups label their credits Category 1 CME, but the labels, though they read the same, refer to different evaluations.

Disclosure of Conflicts of Interest

To comply with the Accreditation Council for Continuing Medical Education (ACCME) Standards of Commercial Support on the need for disclosure and monitoring of proprietary and financial interests that may affect the scientific integrity and balance of content delivered in continuing medical education activities under our auspices, the American College of Mohs Surgery (ACMS) requires that all CME certified activities be developed free from the control of a commercial interest and be balanced, objective, and scientifically rigorous. Anyone with the ability to affect the content of an educational activity must disclose relevant financial relationships with health organizations producing, marketing, re-selling, or distributing health care goods or services consumed by, or used on, patients. The ACMS will disclose faculty and commercial relationships at the Annual Meeting.

Disclosure of Discussion of Non-FDA Approved Uses for Pharmaceutical Products and/or Medical Devices

The ACMS requires that all faculty presenters identify and disclose any off-label uses for pharmaceutical and medical device products. The ACMS recommends that each physician fully review all the available data on new products or procedures prior to instituting them with patients.

Disclaimer

The views expressed and the techniques presented by the speakers of the ACMS sponsored educational meetings are

not necessarily shared or endorsed by the organizations. Anyone with the ability to affect the content of an educational activity must disclose relevant financial relationships with health organizations producing, marketing, re-selling, or distributing health care goods or services consumed by, or used on, patients, as well as any unapproved or off-label uses of medical devices or pharmaceutical agents that they discuss, describe, or demonstrate during their presentations. Meeting attendees should use their independent judgment in applying the information discussed in these educational sessions in the treatment of patients.

Learning Objectives

Upon completion of the Annual Meeting, participants will be able to describe the latest advances in the treatment of skin cancer, discuss recent research findings in the area of Mohs micrographic surgery and cutaneous oncology, and explain new techniques in reconstruction that promote optimal surgical outcomes.

Specific learning objectives, upon completion of the ACMS Annual Meeting include:

- Develop a strategy for providers and office staff to be prepared and respond effectively in emergent situations;
- Design and execute routine and advanced reconstructions of the lip, nose, and ear;
- Describe current recommendations for diagnosis and treatment of melanoma, high-risk squamous cell cancer, and Merkel cell cancer;
- Identify key elements of surgical and laboratory procedures to develop complete and high-quality frozen section microscopic tissue samples;
- Develop office protocols to enhance the experience of patients undergoing surgical procedures;
- Design staged reconstruction procedures to refine suboptimal scars;
- Identify unique patient populations that require modifications of surveillance, staging, or treatment of skin cancers;
- Implement office protocols that improve the safety of outpatient surgery patients;
- Recognize potential pitfalls in frozen section examination of skin cancers and develop strategies to minimize errors;
- Describe essential principles to optimize preoperative, intraoperative, and postoperative surgery of the hands and feet;
- Explain proper billing and coding practices for Mohs and reconstructive surgery;
- Describe eyelid anatomy and common reconstruction strategies;
- Explain the pros and cons of common variations in Mohs surgery technique;
- Describe surgical technique for Mohs surgery of the nail unit;
- Describe recent developments in the management of skin cancer in organ transplant recipients;
- Identify strategies for personal and professional development within the American College of Mohs Surgery.

Rosen Shingle Creek Map



FOLLOW ACMS ON SOCIAL MEDIA



@MohsCollege

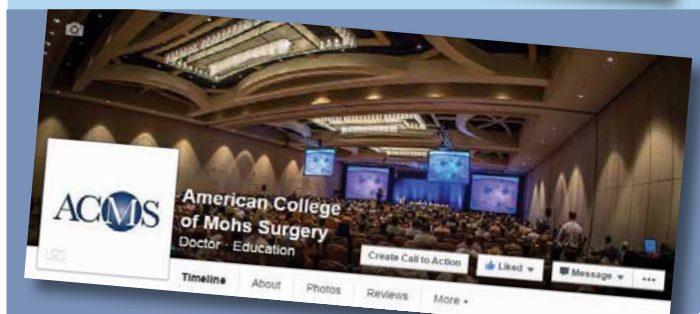
Use **#ACMS16** during the meeting

www.twitter.com/MohsCollege



Find us on
Facebook

www.facebook.com/MohsCollege



Hotel & Travel Information

Hotels

Rosen Shingle Creek

9939 Universal Boulevard
Orlando, FL 32819
Phone: (866) 996-9939
www.rosenshinglecreek.com

Check-in time: 3:00 pm; Check-out time: 11:00 am

Early check-in and late check-out are subject to availability and approval.

Parking

Complimentary for all registered meeting attendees
Valet: \$20 all day or \$21.00 overnight (subject to change)

DoubleTree by Hilton Orlando at SeaWorld

10100 International Drive, Orlando, FL 32821
Phone (407) 352-1100
www.doubletreeorlandoseaworld.com

Check-in time: 4:00 pm; Check-out time: 11:00 am

Early check-in and late check-out are subject to availability and approval.

Parking

Complimentary self-parking for all registered meeting attendees

Airport & Transportation

Orlando International Airport (MCO)
(10.7 miles West of hotel)
1 Jeff Fuqua Boulevard
Orlando, FL 32827
(407) 825-2001
www.orlandoairports.net

For links to the following shuttle and town car transportation companies with service to and from Orlando International Airport, click on the Registration/Hotel tab at www.mohscollege.org/annualmeeting

- Mears Transportation: (855) 463-2776
\$21 one way, \$33 roundtrip / reservation required
- Transtar Transportation Group: (866) 888-5530
- SuperShuttle: (800) 258-3826
\$18 one way, \$32 roundtrip / reservation required

Taxi: Estimated taxi fare is \$43 one way.

Driving Directions: Take the north exit from the airport. Take SR 528 West (Beachline Expressway). Take Exit #2, Orangewood Blvd./Universal Blvd. At the end of the exit ramp, turn right at the light onto Universal Blvd. Rosen Shingle Creek is immediately on the right, just before the Rosen School of Hospitality Management – UCF.

Orlando Weather

During late April:
Average High: 84°F
Average Low: 64°F

Rosen Shingle Creek Onsite Recreation

- Lap pool, zero entry family pool, quiet lounging pool, kiddie wading pool
- Two hot tubs
- The Spa at Shingle Creek
- Shingle Creek Golf Club
- Brad Brewer Golf Academy
- Two lighted tennis courts
- Basketball court (available upon request)
- Olympic-regulation sand volleyball court
- Seasonal fishing (by reservation)
- Nature and walking trails
- Video game room

Restaurants & Lounges

- A Land Remembered (Steakhouse)
- Cala Bella (Italian)
- Banrai Sushi (Japanese)
- Mi Casa Tequila Taqueria (Mexican)
- Tobias Flats & Watering Hole (American pub fare)
- Café Osceola & Osceola Bar (Freshly prepared buffet and a la carte items)
- 18 Monroe Street Market (24-hour deli)
- Smooth Java (Coffees, smoothies and fresh pastries)
- Bella's Bar (Quiet piano bar inside Cala Bella)
- Cat-Tails Pool Bar & Grille (Beverages and light menu items)
- Creek Ice Creamery
- Shingle Creek Clubhouse Grille (Lunch 11:00 am – 2:30 pm)
- Headwaters Lounge

WiFi Connection Instructions

To access the Internet in meeting spaces:

1. Go to the wireless settings on your device.
2. Select the network SSID "**Mohs2016**" and connect.
 - If you are using a mobile device, a portal page will open automatically in your web browser. If you are using a laptop, you may need to launch a browser for the portal page to appear.
3. On the portal page, enter the access code "**derm**" to log in.

NOTE: The complimentary wireless service available in guest rooms uses a different network SSID and access code than noted above for the meeting spaces.

Guest Speaker Biographies

Martin Makary MD, MPH, FACS



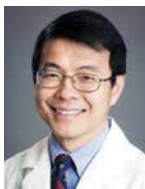
Dr. Makary is *The New York Times* best-selling author of *Unaccountable* and a leading voice for physicians as a writer for *The Wall Street Journal* and *TIME* Magazine. He is a surgical oncologist at Johns Hopkins Hospital and is the creator of The Surgery Checklist described in the book *The Checklist Manifesto*. He led the World Health Organization workgroup to measure surgical quality worldwide. His newest book, *Mama Maggie*, is a biography about a humanitarian Nobel Prize nominee known as the Mother Theresa of Egypt.

At Johns Hopkins, Dr. Makary is Chief of Islet Transplantation Surgery and serves jointly as a professor of Health Policy & Management at the Johns Hopkins Bloomberg School of Public Health. He pioneered two laparoscopic pancreas operations and received the national "Nobility in Science" award from the National Pancreas Foundation. In 2006, he was named the Mark Ravitch Endowed Chair of Gastrointestinal Surgery at Johns Hopkins, and in 2010 was appointed the Director of Surgical Quality & Safety at Johns Hopkins.

He has published over 200 scientific publications and is an advocate for greater physician input in the re-design of health care. His most recent articles have focused on the hazards of corporate medicine, the issue of appropriateness in medical care, and price transparency. Dr. Makary speaks internationally on quality and safety, and has been a visiting professor at over 20 universities. Last year, he was named to America's 20 Most Influential People in Health Care by *Health Leaders Magazine*. Currently, he serves as the national director for Improving Wisely, a Robert Wood Johnson Foundation project to empower physicians to define and endorse quality metrics in health care.

Dr. Makary attended Bucknell University, Thomas Jefferson University, and Harvard University and completed his surgery residency at Georgetown University and fellowship in surgical oncology at Johns Hopkins Hospital.

Benjamin Chang, MD, FACS



Dr. Chang is Associate Professor of Clinical Surgery in the Division of Plastic Surgery at the University of Pennsylvania Medical Center. He is the Program Director of the Penn Plastic Surgery Residency, and Associate Chief of Plastic Surgery. He specializes in hand surgery and the treatment of melanoma. Over the course of two decades, he has accumulated extensive experience in the treatment of both bony and soft-tissue disorders of the hand, wrist, and arm.

Dr. Chang has particular clinical expertise in microsurgery and in the management of hand injuries. He also has a special interest in the treatment of congenital hand differences and holds an appointment at the Children's Hospital of Philadelphia. He has pioneered techniques in syndactyly repair, facial reconstruction, and hand transplantation. He is Co-Director of the Penn Hand Transplant Program and is a member of the Penn Pigmented Lesion Group, a team of specialists who focus on treatment of melanoma and other pigmented lesions. His research and publications concern melanoma, congenital hand differences, and hand trauma.

Dr. Chang was educated at Harvard University and received his medical degree from Harvard Medical School. He completed his general surgery and plastic surgery residencies at New York University Medical Center, where he took an additional year of training in their accredited Hand Surgery Fellowship. He is board-certified in Plastic Surgery and Hand Surgery. In addition to medical student and surgical resident teaching awards, Dr. Chang has been perennially recognized in Best Doctors in America and as a Top Doc in *Philadelphia* magazine.

Peter N. Toensing, MD



Peter N. Toensing, MD serves as the Medical Director for Episode Analytics overseeing clinical content in Optum's medical claims-grouping products Symmetry™ Episode Treatment Groups® (ETG) and Symmetry™ Procedure Episode Groups® (PEG). His medical informatics background is focused on development of clinical content informing valid and reliable grouping of medical claims into distinct episodes of care. He is board-certified in Internal Medicine and has fifteen years of clinical experience in primary care (Medicine/Pediatrics) and hospital-based care including roles in healthcare organizational leadership with a focus on peer review and hospital quality improvement.

Guest Speaker Biographies

Rosalie Elenitsas, MD



Dr. Elenitsas is Professor of Dermatology and Director of Penn Cutaneous Pathology Services, the dermatopathology laboratory at the University of Pennsylvania. A practicing dermatologist and dermatopathologist, her academic interest is in melanoma and melanocytic lesions. She is the Director of the Clark Lectureship in Cutaneous Oncology and Melanoma Symposium, a conference which updates physicians on the most current knowledge in melanoma and cutaneous neoplasia. She is a member of the Pigmented Lesion Group and Abramson Cancer Center at the University of Pennsylvania.

Dr. Elenitsas is the author of over 150 publications and she has given more than 100 invited lectures including directing courses in Dermatopathology and melanoma. She is the Associate Editor of *Lever's Histopathology of the Skin* as well as a co-author of the textbook *Synopsis & Atlas of Lever's Histopathology of the Skin*.

Following undergraduate education at Washington and Jefferson College, she trained in Dermatology at the University of Pittsburgh where she also served as the Chief Resident. Subsequently, she did a Dermatopathology fellowship at the University of Pennsylvania in Philadelphia. She has spent the last 25 years on the faculty at Penn where she is currently the Herman Beerman Professor and the Director of the Dermatopathology Fellowship Program. She has trained more than 25 fellows in Dermatopathology as well as residents, students and international fellows.

She currently serves on the Board of Directors for the American Society of Dermatopathology, editorial advisor for the AAD's *Dermatology World*, and Vice President of the Pennsylvania Academy of Dermatology and Dermatologic Surgery.

Stephen J. Kovach, III, MD



Dr. Kovach is Assistant Professor of Surgery at the Perelman School of Medicine at the University of Pennsylvania and the Presbyterian Medical Center of Philadelphia, and Assistant Professor of Orthopaedic Surgery. He is also an attending surgeon in the Hand Transplantation Program at The Children's Hospital of Philadelphia.

Combining the expertise of the Penn Transplant Institute and the Hospital's Division of Plastic and Reconstructive Surgery and Division of Orthopedics, the Hand Transplantation program aims to help children who have undergone unilateral or bilateral amputation of arms or hands to regain function and independence.

Hand transplantation, or vascularized composite allotransplantation, is a rare procedure performed by only a few surgical teams around the world.

Prior to joining the University of Pennsylvania faculty, Dr. Kovach completed his undergraduate studies at the University of Pennsylvania and medical school at the George Washington University in Washington, DC. He completed his general surgery training and basic science research fellowship at the University of Rochester Medical Center and is board-certified in General Surgery. Dr. Kovach went on to complete his plastic surgery training at Duke University Medical Center.

Wendy W. Lee, MD, MS



Dr. Lee specializes in ophthalmic plastic and reconstructive surgery with a special interest in aesthetic medicine. She treats a broad spectrum of oculoplastic disorders, including eyelid cancers, trauma, tearing disorders, eyelid malpositions, orbital tumors, and infection and inflammation of the lids and orbit.

In addition, as Director of the Bascom Palmer Aesthetic Center, Dr. Lee provides a full range of cosmetic services, including blepharoptosis surgery; blepharoplasty of the upper and lower lids; brow and forehead lifts; and non-surgical cosmetic enhancements including botulinum toxin treatments, dermal fillers, and photorejuvenation.

She also performs laser skin resurfacing to rejuvenate the face, neck, hands and eyelids, all performed at the institute's aesthetic center.

Dr. Lee dedicates time to the teaching of residents, fellows, medical students and community physicians. She is director of UM Cosmetic Medicine, a multidisciplinary cosmetic group involving the departments of ophthalmology, dermatology, ENT and plastic surgery. Together with her colleagues, she organizes multispecialty trainings in cosmetic injectables, topical treatments and lasers.

Dr. Lee earned her medical degree from Tulane University School of Medicine. She holds a Bachelor of Arts degree from the University of California at Santa Barbara and a Master of Science degree in physiology from Georgetown University. She completed both her residency and internship at Tulane University, and a fellowship in ophthalmic plastic and reconstructive surgery at the Bascom Palmer Eye Institute at the University of Miami Miller School of Medicine.

Invited Faculty and Guest Speakers

(as of 4/1/16)

Sumaira Z. Aasi, MD, FACMS, Stanford University School of Medicine, Redwood City, CA

Murad Alam, MD, FACMS, Northwestern University/ Dermatology, Chicago, IL

John G. Albertini, MD, FACMS, The Skin Surgery Center, Winston-Salem, NC

Jennifer Ang, MD, University of Arizona-Banner University Medical Center, Tucson, AZ

Christopher J. Arpey, MD, FACMS, Mayo Clinic, Rochester, MN

Sarah T. Arron, MD, PhD, FACMS, UCSF, San Francisco, CA

Sogyong Auh, MD, PhD, University of Iowa Hospitals and Clinics, Iowa City, IA

Anna A. Bar, MD, FACMS, Oregon Health & Science University, Portland, OR

Christian L. Baum, MD, FACMS, Mayo Clinic, Rochester, MN

Christopher K. Bichakjian, MD, FACMS, University of Michigan, Ann Arbor, MI

Elizabeth M. Billingsley, MD, FACMS, Penn State Hershey Medical Center, Hershey, PA

Jeremy S. Bordeaux, MD, MPH, FACMS, Case Western Reserve University, Cleveland, OH

Jerry D. Brewer, MD, FACMS, Mayo Clinic, Rochester, MN

David G. Brodland, MD, FACMS, Zitelli & Brodland, PC, Pittsburgh, PA

Mariah R. Brown, MD, FACMS, University of Colorado, Aurora, CO

Laura Burger, MS, HT, Hospital of the University of Pennsylvania, Philadelphia, PA

Bryan T. Carroll, MD, PhD, EVMS Dermatology, Norfolk, VA

Todd V. Cartee, MD, Penn State Milton S. Hershey Medical Center, Hershey, PA

An-Wen Chan, MD, DPhil, FRCPC, FACMS, Women's College Hospital, Toronto, ON, Canada

Benjamin Chang, MD, FACS, Perelman Center for Advanced Medicine, Philadelphia, PA

Timothy W. Chang, MD, Mayo Clinic, Rochester, MN

David L. Chen, MD, University of Colorado, Aurora, CO

Diana Cohen, MD, MS, University of Minnesota, Minneapolis, MN

Karen Connolly, MD, Memorial Sloan Kettering Cancer Center, New York, NY

Joel Cook, MD, FACMS, MUSC, Charleston, SC

Jonathan L. Cook, MD, FACMS, Duke University Medical Center, Durham, NC

Ali A. Damavandy, MD, University of Pennsylvania, Philadelphia, PA

Keith L. Duffy, MD, FACMS, University of Utah, Salt Lake City, UT

Daniel B. Eisen, MD, FACMS, University of CA, Davis, Sacramento, CA

Rosalie Elenitsas, MD, Penn Medicine Radnor, Wayne, PA

Jeremy Etzkorn, MD, University of Pennsylvania, Philadelphia, PA

Douglas Fife, MD, FACMS, Surgical Dermatology & Laser Center, Las Vegas, NV

Timothy C. Flynn, MD, FACMS, Cary Skin Center, Cary, NC

Scott W. Fosko, MD, FACMS, Mayo Clinic Florida, Jacksonville, FL

Matthew C. Fox, MD, Austin Dermatologic Surgery Center, Austin, TX

Hayes B. Gladstone, MD, FACMS, Gladstone Clinic, San Ramon, CA

Hugh M. Gloster, Jr., MD, FACMS, University of Cincinnati, Cincinnati, OH

Spring Golden, MD, Oregon Health & Science University, Portland, OR

Glenn D. Goldman, MD, FACMS, Fletcher Allen Health Care, Burlington, VT

Renato Goreschi, MD, Roger Williams Medical Center, Providence, RI

Bradley N. Greenhaw, MD, Dermatology Center of North Mississippi, Tupelo, MS

Allison M. Hanlon, MD, PhD, Nashville Skin and Cancer, Nashville, TN

Christopher B. Harmon, MD, FACMS, Surgical Dermatology Group, Birmingham, AL

Ali Hendi, MD, FACMS, Ali Hendi, MD, PC, Chevy Chase, MD

James T. Highsmith, MD, MS, Total Skin and Beauty Dermatology Center, Birmingham, AL

Jason M. Hirshburg, MD, PhD, University of Texas at Austin, Austin, TX

S. Tyler Hollmig, MD, Stanford University Medical Center, Redwood City, CA

Todd E. Holmes, MD, FACMS, Fletcher Allen Health Care, Charlotte, VT

Eva A. Hurst, MD, FACMS, Washington Univ. School of Medicine, St. Louis, MO

Walayat Hussain, MD, FACMS, Leeds Centre for Dermatology, Leeds, United Kingdom

Scott N. Isenath, MD, FACMS, Group Health, Seattle, WA

Nathaniel J. Jellinek, MD, FACMS, Dermatology Professionals, Inc., East Greenwich, RI

Ryan P. Johnson, MD, FAAD, Medical Dermatology Specialists, Phoenix, AZ

Thomas J. Knackstedt, MD, Dermatology Professionals, Inc., East Greenwich, RI

Nita Kohli, MD, MPH, University of Missouri School of Medicine, Columbia, MO

Iren Kossintseva, MD, Dermatologic Surgery Centre, Vancouver, BC, Canada

Stephen J. Kovach, III, MD, University of Pennsylvania Medical Center, Philadelphia, PA

Kent J. Krach, MD, FACMS, Midwest Skin Cancer Surgery Center, Clinton Township, MI

Ravi S. Krishnan, MD, FACMS, Virginia Mason Hospital & Seattle Medical Center, Seattle, WA

Naomi Lawrence, MD, FACMS, Cooper University Hospital, Marlton, NJ

Brian C. Leach, MD, FACMS, Medical University of South Carolina, Charleston, SC

Erica H. Lee, MD, FACMS, Memorial Sloan Kettering Cancer Center, New York, NY

Ken K. Lee, MD, FACMS, Portland Dermatology Clinic, Portland, OR

Wendy W. Lee, MD, MS, University of Miami Miller School of Medicine, Miami, FL

Invited Faculty and Guest Speakers

Justin J. Leitenberger, MD, Oregon Health & Science University, Portland, OR

Jonathan Lopez, MD, Mayo Clinic, Rochester, MN

Jennifer Lucas, MD, Cleveland Clinic, Cleveland, OH

Deborah F. MacFarlane, MD, MPH, FACMS, MD Anderson Cancer Center, Houston, TX

Mac Machan, MD, Surgical Dermatology & Laser Center, Las Vegas, NV

Ian A. Maher, MD, FACMS, Saint Louis University, St. Louis, MO

Martin Makary, MD, MPH, FACS, Johns Hopkins, Baltimore, MD

Mary E. Maloney, MD, FACMS, UMass Memorial Medical Center, Worcester, MA

Margaret Mann, MD, FACMS, University Hospitals at Westlake, Westlake, OH

Victor J. Marks, MD, FACMS, Geisinger Medical Center, Danville, PA

Juan-Carlos Martinez, MD, FACMS, Mayo Clinic, Jacksonville, FL

Jamie L. McGinness, MD, FACMS, Springfield Clinic, Springfield, IL

Jill McKenzie, MD, Valley Skin Cancer Surgery, Chandler, AZ

Christopher J. Miller, MD, FACMS, Hospital of the University of Pennsylvania, Philadelphia, PA

Vineet Mishra, MD, University of Texas Health Science Center - San Antonio, San Antonio, TX

Michael Mortazie, DO, St. Joseph Mercy Hospital, Ypsilanti, MI

Euphemia W. Mu, MD, New York University School of Medicine, New York, NY

Michael Murphy, MD, FACMS, The Indiana Skin Cancer Center, PC, Greenwood, IN

Ann G. Neff, MD, FACMS, Dermatology Associates, Bradenton, FL

Kishwer S. Nehal, MD, FACMS, Memorial Sloan Kettering Cancer Center, New York, NY

Tri H. Nguyen, MD, FACMS, Northwest Diagnostic Clinic, PA, Pearland, TX

Rajiv I. Nijhawan, MD, University of Texas Southwestern Medical Center, Dallas, TX

Jonathan Olson, MD, Dermatology Laser & Vein Specialists, Charlotte, NC

Clark C. Otley, MD, FACMS, Mayo Clinic, Rochester, MN

Vishal A. Patel, MD, Columbia University Medical Center, New York, NY

Daniel J. Pearce, MD, FACMS, The Skin Surgery Center, Winston-Salem, NC

Clifford S. Perlis, MD, MBe, FACMS, Abington Dermatology Associates, PC, Penn Valley, PA

Melissa Pugliano-Mauro, MD, FACMS, UPMC St. Margaret Dermatology, Allison Park, PA

Désirée Ratner, MD, FACMS, Beth Israel Cancer Center West, New York, NY

Christie Regula, MD, Vujevich Dermatology Associates, Pittsburgh, PA

Dominic Ricci, MD, Scott & White Clinic, Round Rock, TX

Howard W. Rogers, MD, PhD, FACMS, Advanced Dermatology, Norwich, CT

Thomas E. Rohrer, MD, FACMS, Skin Care Physicians, Chestnut Hill, MA

Anthony Rossi, MD, Memorial Sloan Kettering Cancer Center, New York, NY

Emily S. Ruiz, MD, Brigham & Women's Hospital, Jamaica Plain, MA

Faramarz H. Samie, MD, PhD, FACMS, Dartmouth Hitchcock Medical Center, Lebanon, NH

Chrysalyne D. Schmults, MD, MSCE, FACMS, Brigham & Women's Faulkner Hospital, Jamaica Plain, MA

Waqas Shaikh, MD, MPH, University of Pennsylvania, Philadelphia, PA

Victoria Sharon, MD, University of California, Davis, Sacramento, CA

Thuzar M. Shin, MD, PhD, FACMS, University of Pennsylvania, Philadelphia, PA

Babu Singh, MD, Boston University Medical Center, Boston, MA

Sidney P. Smith, III, MD, FACMS, Georgia Skin and Cancer Clinic, Savannah, GA

Joseph F. Sobanko, MD, FACMS, Hospital of the University of Pennsylvania, Philadelphia, PA

Seaver Soon, MD, Scripps Clinic, La Jolla, CA

Thomas Stasko, MD, FACMS, University of Oklahoma, Oklahoma City, OK

Mary Stevenson, MD, New York University School of Medicine, New York, NY

Adam Sutton, MD, MBA, Keck School of Medicine of USC, Los Angeles, CA

Michael H. Swann, MD, FACMS, Swann Dermatology & Esthetics, Springfield, MO

Zain U. Syed, MD, Dayton Skin Surgery Center, Inc., Dayton, OH

Peter N. Toensing, MD, Optum, Minneapolis, MN

Abel Torres, MD, JD, FACMS, Loma Linda University, Loma Linda, CA

Marta J. VanBeek, MD, FACMS, University of Iowa Hospitals & Clinics, Iowa City, IA

Chetan Vedvyas, MD, DermSurgery Associates, Houston, TX

Allison T. Vidimos, MD, RPh, FACMS, Cleveland Clinic Foundation, Cleveland, OH

Jeanie Wade, HT (ASCP), Dermatology Associates of Tyler, Tyler, TX

Abigail Waldman, MD, Northwestern University, Chicago, IL

J. Michael Wentzell, MD, FACMS, North Sound Dermatology, Anacortes, WA

Oliver J. Wisco, DO, FACMS, Bend Memorial Clinic, Bend, OR

Melanie Wong, MD, University of Colorado, Aurora, CO

Wesley Wu, MD, Baylor College of Medicine, Houston, TX

Yaohui G. Xu, MD, PhD, FACMS, University of Wisconsin-Madison, Madison, WI

Siegrid S. Yu, MD, FACMS, University of California San Francisco, San Francisco, CA

Nathalie C. Zeitouni, MD, FACMS, University of Arizona, Tucson, AZ

Isaac Zilinsky, MD, FACMS, The Chaim Sheba Medical Center, Yehud, Israel

John A. Zitelli, MD, FACMS, UPMC Shadyside, Pittsburgh, PA

Fiona M. Zwald, MD, MRCPI, FACMS, Emory University, Atlanta, GA

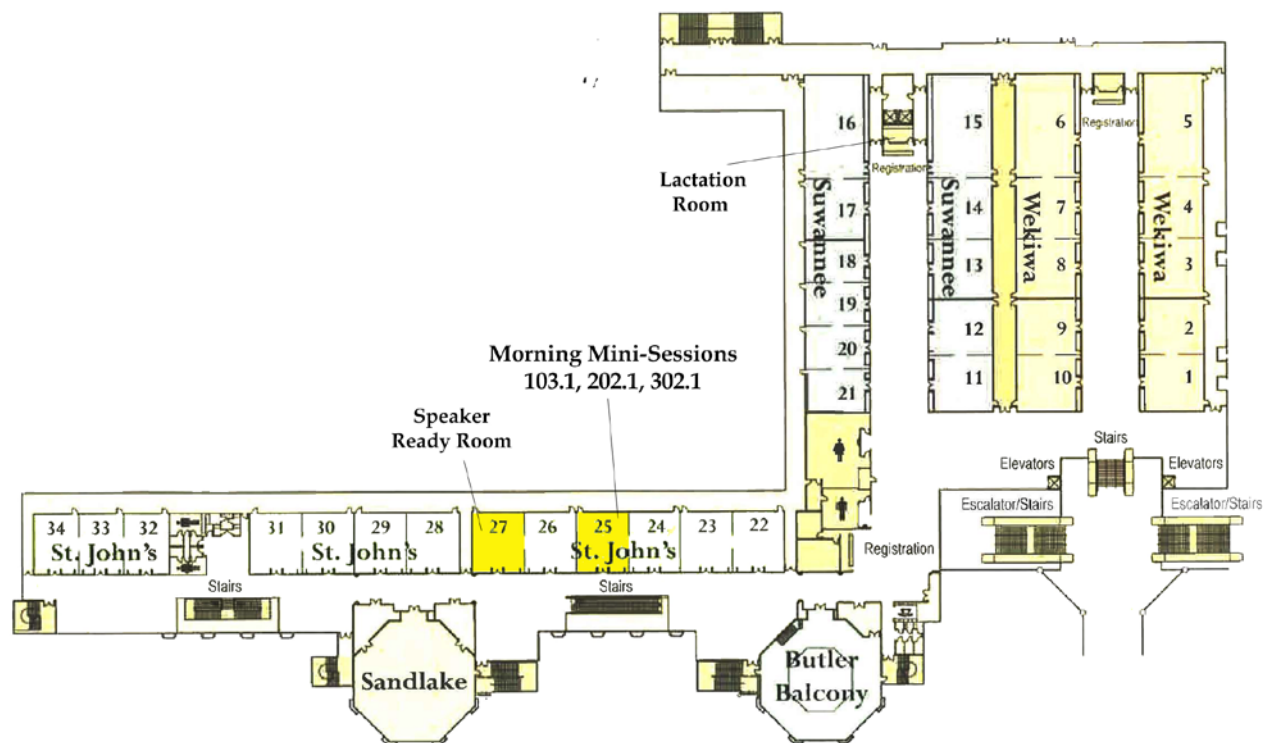
Thank You to the 2016 Annual Meeting Sponsors

The American College of Mohs Surgery gratefully acknowledges the following companies for their contributions and support to help underwrite the educational goals of the ACMS Annual Meeting.

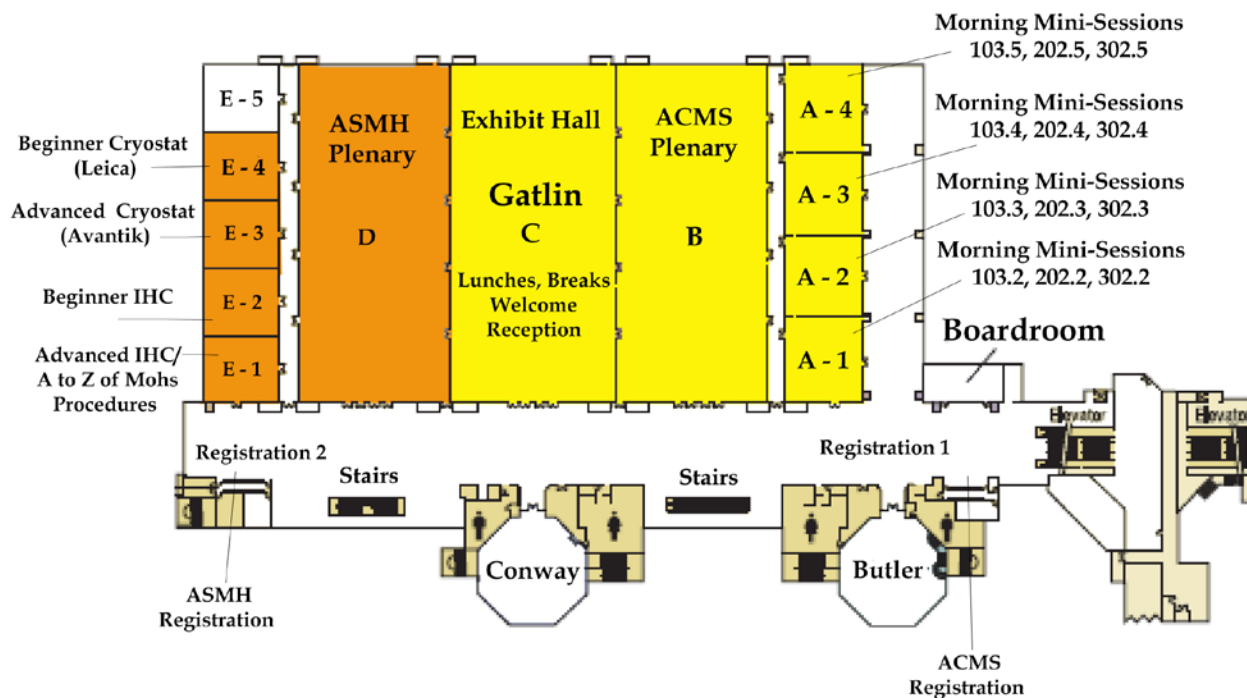


Rosen Shingle Creek Floor Plan

Upper Level Meeting Rooms and Speaker Ready Room



Lower Level: Gatlin Ballrooms, Registration Desks and Meeting Rooms



THE
PHYSICIAN'S
SPECIALIST®



LUNCHEON WORKSHOP

April 28th ■ St. John's 23 (upper level) ■ 12-1pm

Please join **Matthew Dodge from Larson Financial Group**, a nationwide wealth management firm specializing in physicians and their families. You will learn about **critical areas impacting the finances of the Mohs surgeon**, along with **examples of mistakes and success stories**. He will share practical solutions that can be used to help you, your practice and family create and protect your wealth. **This is an interactive discussion and your participation is encouraged.**



MATTHEW DODGE, MBA

Financial Advisor

Phone: 989-941-7119

Toll Free: 800-569-2450

Fax: 877-784-7502

Email: Matt.Dodge@LarsonFinancial.com

RELATED SERVICES:*

Retirement Planning
Asset Protection
Tax Planning
Estate Planning
Employee Benefits
Mortgage Planning
Investments
Practice Management
Risk Management/Insurance
Financial Contract Review
Commercial Real Estate Investing

Advisory services offered through Larson Financial Group, LLC, a Registered Investment Advisor. Securities offered through Larson Financial Securities, LLC, member FINRA/SIPC. Larson Financial Group, Larson Financial Securities, and their representatives do not provide legal or tax advice. Please consult the appropriate professional regarding your legal or tax planning needs.

*Not all Related Services are offered directly from Larson Financial Group or Larson Financial Securities but may be available through the Doctors Only network of companies.

Scientific Program Schedule—Thursday, April 28

7:00 – 8:15 am Locations listed below

Concurrent Morning Mini-Sessions

103.1 How to Author and Review Manuscripts for Publication: Lessons from the Editors and Seasoned Authors

(1.25 Credit Hours) **St. John's 25 (Upper Level)**

At the conclusion of this session, participants should be able to:

- 1) Describe the editorial process;
- 2) Enumerate the steps involved in authoring a manuscript;
- 3) Explain the process involved in reviewing a manuscript.

Murad Alam, MD, FACMS; Désirée Ratner, MD, FACMS

103.2 Advanced Lip Reconstruction: Step-by-Step Instructions for Challenging Single-Stage and Multiple-Stage Reconstructions ♦

(1.25 Credit Hours) **Gatlin A-1**

At the conclusion of this session, participants should be able to:

- 1) Design and implement aesthetic and functional reconstructions for challenging lip wounds including larger full-thickness operative defects;
- 2) Feel more comfortable with the lip wedge, full-thickness crescentic advancement flap, cheek to lip flaps, Abbe-Estlander flap, vermilionectomy and mucosal advancement and Karapandzic flap;
- 3) Recognize the variations in lip anatomy and function between individuals and as a function of time. Use this knowledge to guide your reconstruction.

Glenn D. Goldman, MD, FACMS; Joseph F. Sobanko, MD, FACMS

103.3 Bilobed and Trilobed Flaps for Nasal and Extranasal Applications

(1.25 Credit Hours) **Gatlin A-2**

At the conclusion of this session, participants should be able to:

- 1) Identify nasal and extranasal surgical defect that would best be repaired with a bilobed or trilobed flap;
- 2) Specify the design of the flap that will yield predictable aesthetic and functional results;
- 3) Define and avoid potential complications associated with the use of bilobed and trilobed flap repairs.

Joel Cook, MD, FACMS; Jeremy Etkorn, MD

103.4 Merkel Cell Cancer ♦

(1.25 Credit Hours) **Gatlin A-3**

At the conclusion of this session, participants should be able to:

- 1) Identify the suggested changes to the upcoming 8th edition AJCC staging system for Merkel cell carcinoma, based on updated survival data;
- 2) Utilize recent developments in the clinical management of Merkel cell carcinoma, including sentinel lymph node biopsy and adjuvant therapy, to guide multidisciplinary care;
- 3) Analyze recent scientific data on the pathogenesis of Merkel cell carcinoma in relation to outcomes and emerging therapies.

Christopher K. Bichakjian, MD, FACMS; Siegrid S. Yu, MD, FACMS

103.5 Developing and Managing a High-Quality Frozen Section Mohs Laboratory

(1.25 Credit Hours) **Gatlin A-4**

At the conclusion of this session, participants should be able to:

- 1) Identify the regulatory bodies involved in the certification of a Mohs laboratory, as well as the challenges involved in building a new Mohs laboratory;
- 2) Describe the role of the histotech in the Mohs laboratory, including an overview of the tissue processing options involved in generating a quality representative section;
- 3) Identify the potential benefits of immunostaining in Mohs surgery as well as the process of setting up an immunohistochemistry lab.

Laura Burger, MS, HT; Matthew C. Fox, MD; Jeanie Wade, HT (ASCP)

8:30 – 9:00 am

Gatlin B

Welcome & AAD Update

(0.50 Credit Hour)

At the conclusion of this session, participants should be able to:

- 1) Identify the activities of the ACMS and its many committees;
- 2) Recognize the AAD's strategic focus and some of the activities in place to advance it;
- 3) Recognize the challenges and opportunities that the ACMS and AAD will face in the coming year.

John G. Albertini, MD, FACMS, ACMS President; Christopher J. Miller, MD, FACMS, Scientific Program Chair; Abel Torres, MD, JD, FACMS, AAD President-Elect

9:00 – 9:45 am

Gatlin B

Literature Review: Editors' Picks of Top Articles from the Major Dermatology Journals

(0.75 Credit Hour)

At the conclusion of this session, participants should:

- 1) Identify the most important articles published in the past year in Dermatologic Surgery, JAMA Derm, and the Journal of the American Academy of Dermatology;
- 2) Explain the relevance of these articles to dermatologic surgical practice;
- 3) Apply newly gained knowledge to improve patient care.

Moderators: Naomi Lawrence, MD, FACMS; Clifford S. Perlis, MD, MBe, FACMS; Désirée Ratner, MD, FACMS

9:30 – 7:30 pm

Gatlin C

Exhibit Hall Open

9:45 – 10:00 am

Gatlin C

Break

(CME Not offered)

♦ Represents advanced expertise level course

Scientific Program Schedule—Thursday, April 28

10:00 – 11:00 am

Gatlin B

Tromovitch Award Abstract Session

(1.00 Credit Hour)

At the conclusion of this session, participants should be able to:

- 1) Identify recent advances in cutaneous oncology and pathology;
- 2) Recognize the current state of the practice of Mohs surgery;
- 3) Recall young investigators' research and scholarly activities.

Moderators: Christie Regula, MD (2015 Tromovitch Award Abstract Winner); Jerry D. Brewer, MD, FACMS (2015 Scientific Program Chair)

10:00 – 10:07 AM

Frozen Section Concordance of Mohs Micrographic Surgery

James T. Highsmith, MD, MS^{1,2}; Michael Highsmith, PhD³; Gary Monheit, MD^{1,4}

1. Total Skin and Beauty Dermatology Center, Birmingham, AL
2. James Haley VA Hospital, Tampa, FL
3. U.S. Department of Veterans Affairs, Tampa, FL
4. University of Alabama at Birmingham, Birmingham, AL

10:08 – 10:15 AM

Matrilin-2 as an Invasion Marker to Distinguish Basal Cell Carcinoma with Benign Adnexal Tumors

Renato Goreschi, MD¹; Satori Iwamoto, PhD¹

1. Roger Williams Medical Center, Providence, RI

10:16 – 10:23 AM

Assessing the Feasibility of an Alternative Payment Model for Mohs Micrographic Surgery

Sogyong Auh, MD, PhD¹; Pooja Chitgopeker, MD¹; Josh Hammel, MD¹; Nkanyezi Ferguson, MD¹; Hillary Johnson-Jahangir, MD, PhD¹; Marta VanBeek, MD, MPH¹

1. University of Iowa Hospitals and Clinics, Iowa City, IA

10:24 – 10:31 AM

Mohs Micrographic Surgery Utilization is Correlated with Number of Skin Biopsies Performed: An Analysis of Medicare and Private Insurance Claims Data

Emily S. Ruiz, MD¹; Pritesh S. Karia, MPH¹; Corwin Zigler, PhD²; Chrysalyne D. Schmults, MD, MSCE¹

1. Brigham & Women's Hospital, Jamaica Plain, MA
2. Harvard T.H. Chan School of Public Health, Boston, MA

10:32 – 10:39 AM

Time to Local Recurrence of Lentigo Maligna

Karen Connolly, MD^{1,2}; Brian Hibler, BA³; Erica Lee, MD¹; Anthony Rossi, MD¹; Kishwer Nehal, MD¹

1. Memorial Sloan Kettering Cancer Center, New York, NY
2. Private practice, West Orange, NJ
3. University of Wisconsin, Madison, WI

10:40 – 10:47 AM

Intraoperative Immunostaining for Cytokeratin-7 During Mohs Micrographic Surgery Reduces Recurrence Rates in Extramammary Paget's Disease - A Multicenter Retrospective Study

Ali A. Damavandy, MD¹; Vitaly Terushkin, MD²; John A. Zitelli³, MD; David G. Brodland, MD⁴; Christopher J. Miller, MD¹; Jeremy Etzkorn, MD¹; Thuzar Shin, MD, PhD¹; Mario Mitkov, MD⁵; Mark Capell, MD⁵; Ali Hendi, MD⁶

1. University of Pennsylvania, Philadelphia, PA
2. New York University, New York, NY
3. Zitelli and Brodland, Pittsburgh, PA
4. Zitelli and Brodland, Clairton, PA
5. Mayo Clinic Jacksonville, Jacksonville, FL
6. Georgetown University Hospital, Washington, DC

10:48 – 10:55 AM

A Retrospective Case-Matched Cost Comparison of Surgical Treatment of Melanoma and Non-Melanoma Skin Cancer in the Outpatient vs Operating Room Setting

Ryan P. Johnson, MD^{1,2}; Niraj Butala, MD³; Murad Alam, MD⁴; Naomi Lawrence, MD³

1. Medical Dermatology Specialists, Phoenix, AZ
2. Banner MD Anderson, Gilbert, AZ
3. Cooper University Hospital, Marlton, NJ
4. Northwestern University Feinberg School of Medicine, Chicago, IL

11:00 am – 12:00 pm

Gatlin B

Strategies to Achieve Perfect Mohs Frozen Sections

(1.00 Credit Hour)

At the conclusion of this session, participants should be able to:

1. Identify steps in obtaining ideal Mohs layers and frozen sections for eyelid tumors;
2. Describe how best to process cartilage and periosteum and communicate effectively with the Mohs histotechnologist to ensure high quality sections;
3. Identify pearls and pitfalls in initiating Mohs surgery and histopathology for melanoma.

Moderator: Sumaira Z. Aasi, MD, FACMS

Speakers: Bryan T. Carroll, MD, PhD; Ann G. Neff, MD, FACMS; Mac Machan, MD; Thuzar M. Shin, MD, PhD, FACMS

12:00 – 1:00 pm

Gatlin C

Networking Lunch (provided)

(CME Not Offered)

Enjoy lunch and the time to network with your colleagues!

12:00 – 1:00 pm

Gatlin C

Exhibit Hall Open

♦ Represents advanced expertise level course

Scientific Program Schedule—Thursday, April 28

1:00 – 2:00 pm

Gatlin B

Practical Solutions for Common Reconstruction Challenges

(1.00 Credit Hour)

At the conclusion of this session, participants should be able to:

- 1) Identify common challenges to achieving excellent outcomes during routine reconstruction procedures;
- 2) Minimize suboptimal outcomes with effective surgical design and execution;
- 3) Recognize how minor modifications in operative design can improve surgical results.

Moderator: Jonathan L. Cook, MD, FACMS

Speakers: Walayat Hussain, MD, FACMS; Ian A. Maher, MD, FACMS;

Naomi Lawrence, MD, FACMS

2:00 – 2:45 pm

Gatlin B

Update on Melanoma

(0.75 Credit Hour)

At the conclusion of this session, participants should be able to:

- 1) Summarize the latest evidence for the use of Mohs surgery for the treatment of melanoma and melanoma in situ;
- 2) Summarize the current evidence for genetic profiling of melanomas for prognosis.

Moderator: Allison T. Vidimos, MD, RPh, FACMS

Speakers:

Mohs Surgery for Invasive Melanoma and Melanoma in Situ

John A. Zitelli, MD, FACMS

Genetic Profiling of Melanoma

Kishwer S. Nehal, MD, FACMS

2:45 – 3:00 pm

Gatlin B

Update on Merkel Cell Cancer

(0.25 Credit Hour)

At the conclusion of this session, participants should be able to:

- 1) Describe the current staging system for Merkel cell cancer;
- 2) Identify new developments in the staging and treatment of Merkel cell cancer;
- 3) Identify potential areas for research of Merkel cell cancer.

Moderator: Sarah T. Arron, MD, PhD, FACMS

3:00 – 3:15 pm

Gatlin C

Break

(CME Not offered)

3:15 – 4:15 pm

Gatlin B

Clinical Pearls Abstract Session

(1.00 Credit Hour)

At the conclusion of this session, participants should be able to identify new research developments in Mohs surgery and oncology.

Moderator: Murad Alam, MD, FACMS

3:15 – 3:22 PM

Demographic and Clinicopathologic Tumor Characteristics Associated with Subclinical Spread of Invasive Melanoma

Thuzar M. Shin, MD, PhD¹; Waqas R. Shaikh, MD, MPH¹; Christopher J. Miller, MD¹; Joseph F. Sobanko, MD¹; Jeremy R. Etzkorn, MD²

1. University of Pennsylvania, Philadelphia, PA

2. University of Pennsylvania, Yardley, PA

3:23 – 3:30 PM

Incidence of High-Risk Features and Tumor Upstaging Based on Debulk Analysis from Mohs Micrographic Surgery and Excisions Compared to Initial Biopsy of Cutaneous Basal Cell and Squamous Cell Carcinoma: A Quantitative Systematic Review

Babu Singh, MD¹; Adriana Dorelles, ScD, MS²; Nellie Konnikov³; Bichchau Michelle Nguyen, MD, MPH^{3,4}

1. Boston University Medical Center, Boston, MA

2. Arizona State University, Tempe, AZ

3. VA Boston Healthcare System, Boston, MA

4. Tufts Medical Center, Boston, MA

3:31 – 3:38 PM

Outcomes of Adjuvant Radiotherapy Following Negative Surgical Margins for Cutaneous Squamous Cell Carcinoma

Timothy W. Chang, MD¹; David J. Schwartz, MD¹; Phillip C. Hochwalt, MD¹; Christopher J. Arpey, MD¹; Jerry D. Brewer, MD¹; Thomas L. Hocker, MD¹; Clark C. Otley, MD¹; Randall K. Roenigk, MD¹; Christian L. Baum, MD¹

1. Mayo Clinic, Rochester, MN

3:39 – 3:46 PM

Can the American College of Mohs Surgery Mohs Video Impact a Patient's Perception of Mohs Surgery

Sidney P. Smith, III, MD, FACMS¹

1. Georgia Skin and Cancer Clinic, Savannah, GA

3:47 – 3:54 PM

Adverse Events Associated with Lidocaine and Epinephrine Use in Dermatologic Surgery: A Retrospective Review

Jason M. Hirshburg, MD, PhD¹; Matthew C. Fox, MD¹; Dayna G. Diven, MD¹

1. University of Texas at Austin, Austin, TX

3:55 – 4:02 PM

Practice Patterns and Job Satisfaction of Mohs Surgeons

Nita Kohli, MD, MPH¹; Nicholas Golda, MD¹

1. University of Missouri, Columbia, MO

4:03 – 4:10 PM

Patient and Disease Specific Outcomes in Digit Sparing En Bloc Surgery of Nail Apparatus Melanoma in Situ

Thomas J. Knackstedt, MD¹; Erin Wilmer, MD²; Leslie Robinson-Bostom², MD; Gladys H. Telang, MD²; Nathaniel J. Jellinek, MD^{1,2,3}

1. Dermatology Professionals, Inc., East Greenwich, RI

2. The Warren Alpert Medical School at Brown University, Providence, RI

3. University of Massachusetts Medical School, Worcester, MA

♦ Represents advanced expertise level course

Scientific Program Schedule—Thursday, April 28

4:15 – 5:15 pm

Gatlin B

Strategies to Enhance the Patient Experience from Pre-Op to Post-Op

(1.00 Credit Hour)

At the conclusion of this session, participants should be able to:

- 1) Describe an algorithm for group preoperative consultation;
- 2) Identify patients at high risk of anxiety and how to administer anxiolytics;
- 3) Discuss ways to reduce intraoperative and postoperative pain and formulate an optimal plan for postoperative care that maximizes patient satisfaction.

Moderators: Daniel B. Eisen, MD, FACMS; Erica H. Lee, MD, FACMS

Speakers:

Role of Anxiolytics in Mohs Surgery

Jerry D. Brewer, MD, FACMS

Pain Management in Mohs Surgery

Bryan T. Carroll, MD, PhD

Photos Improve Patient-Office Communication

Rajiv I. Nijhawan, MD

New Approaches to the Consultation

Faramarz H. Samie, MD, PhD, FACMS

Enhance the Post-Operative Experience

Victoria Sharon, MD

Patient Anxiety During Mohs Surgery

Joseph F. Sobanko, MD, FACMS

5:30 – 7:30 pm

Gatlin C

Exhibit Hall Grand Opening & Welcome Reception

(CME Not offered)



DEMONSTRATE YOUR COMMITMENT TO
MOHS SURGERY BY JOINING
THE SKIN CANCER FOUNDATION

Benefits Include:

- ✓ Free Patient Brochures
- ✓ Inclusion in Online Physician Finder, with 60,000+ Visits Per Year
- ✓ Potential Media Interviews
- ✓ Opportunity to Write Articles for the Foundation

Contact Director of Development **Adrienne Cea**
(212) 725-5176 x114 or acea@skincancer.org.

SkinCancer.org



/SkinCancerFoundation



@SkinCancerOrg

♦ Represents advanced expertise level course

Scientific Program Schedule—Friday, April 29

7:00 – 8:15 am

Locations listed below

Concurrent Morning Mini-Sessions

202.1 How You Can Get Involved in the ACMS: Lessons from Past and Future Presidents

(1.25 Credit Hours) **St. John's 25 (Upper Level)**

At the conclusion of this session, participants should be able to:

- 1) Describe how to actively participate in the life of the American College of Mohs Surgery via a range of volunteer opportunities;
- 2) Appreciate and understand the evolving goals of the ACMS Strategic Plan;
- 3) Recognize how to have your personal strengths and passions guide your professional involvement.

Scott W. Fosko, MD, FACMS; Thomas Stasko, MD, FACMS

202.2 Nasal Flaps with 3 or More Stages: Step-by-Step Strategies to Incorporate into Your Own Practice ♦

(1.25 Credit Hours) **Gatlin A-1**

At the conclusion of this session, participants should be able to:

- 1) Describe indications for a forehead flap with three or more stages;
- 2) Execute the intermediate stages of multi-staged forehead flaps;
- 3) Identify and avoid common pitfalls with multi-staged forehead flaps.

Jonathan L. Cook, MD, FACMS; Christopher J. Miller, MD, FACMS

202.3 Surgical Refinement of Scars: Contouring Flaps, Z-plasties, and Correcting Free Margin Position

(1.25 Credit Hours) **Gatlin A-2**

At the conclusion of this session, participants should be able to:

- 1) Compare the options for free margin correction;
- 2) Identify the indications and steps for Z-plasty.

Jeremy S. Bordeaux, MD, MPH, FACMS; Tri H. Nguyen, MD, FACMS

202.4 Melanoma: Controversies in Consensus Guidelines

(1.25 Credit Hours) **Gatlin A-3**

At the conclusion of this session, participants should be able to:

- 1) Describe the process to develop consensus guidelines;
- 2) Identify areas where consensus guidelines are based on limited data;
- 3) Evaluate existing evidence when management decisions remain controversial.

David G. Brodland, MD, FACMS; John A. Zitelli, MD, FACMS

202.5 Treatment Alternatives When Mohs Surgery is Not the Best Option

(1.25 Credit Hours) **Gatlin A-4**

At the conclusion of this session, participants should be able to:

- 1) Identify clinical situations when Mohs surgery would not be advisable;
- 2) Describe treatment alternatives to surgery in the management of skin cancers;
- 3) Outline therapeutic options for skin cancers not suitable for Mohs surgery.

Allison M. Hanlon, MD, PhD; Faramarz H. Samie, MD, PhD, FACMS;

Nathalie C. Zeitouni, MD, FACMS

8:30 – 9:30 am

Gatlin B

Scientific Abstract Session

(1.00 Credit Hour)

At the conclusion of this session, participants should be able to identify new research developments in Mohs surgery and oncology.

Moderator: Christopher J. Arpey, MD, FACMS

8:30 – 8:37 AM

National Utilization Patterns and Survival Outcomes of Wide Local Excision and Mohs Micrographic Surgery for Merkel Cell Carcinoma

Waqas R. Shaikh, MD, MPH¹; Joseph F. Sobanko, MD¹; Jeremy R. Etzkorn, MD²; Thuzar M. Shin, MD, PhD¹; Christopher J. Miller, MD¹

1. University of Pennsylvania, Philadelphia, PA

2. University of Pennsylvania, Yardley, PA

8:38 – 8:45 AM

Estimation of Prognosis in Invasive Melanoma Using a Gene Expression Profile Test

Bradley N. Greenhaw, MD^{1,2}; David G. Brodland, MD²; John A. Zitelli, MD³

1. The Dermatology Center of North Mississippi, Tupelo, MS

2. Zitelli & Brodland Skin Cancer Center, Clairton, PA

3. Zitelli & Brodland Skin Cancer Center, Pittsburgh, PA

8:46 – 8:53 AM

Evaluation of Digitally Stained Multimodal Confocal Mosaics for Screening Non-Melanoma Skin Cancer

Euphemia W. Mu, MD¹; Jesse M. Lewin, MD¹; Mary L. Stevenson, MD¹;

John Carucci, MD, PhD¹; Shane A. Meehan, MD¹; Daniel S. Gareau,

PhD²

1. New York University School of Medicine, New York, NY

2. The Rockefeller University, New York, NY

8:54 – 9:01 AM

The Helical RimArcade, From Clinical Experience to Anatomical Conclusions

Isaac Zilinsky, MD¹; Sebastian Cotofana²

1. The Sheba Medical Center, Tel Aviv University, Ramat Gan, Israel

2. Institute of Anatomy, Paracelsus Medical University, Salzburg, Austria

9:02 – 9:09 AM

Outcomes of Sentinel Lymph Node Biopsy for Primary Cutaneous Squamous Cell Carcinoma of the Head and Neck

Jonathan J. Lopez, MD¹; John G. Muzic, MD¹; Daniel L. Price, MD¹; Jerry

D. Brewer, MD¹; Christian L. Baum, MD¹

1. Mayo Clinic, Rochester, MN

9:10 – 9:17 AM

Metastatic Cutaneous Squamous Cell Carcinoma: The Importance of T2 Stratification and Hematologic Malignancy in Prognostication

Mary L. Stevenson, MD¹; Anna C. Pavlick, DO¹; John A. Carucci, MD, PhD¹

1. New York University School of Medicine, New York, NY

9:18 – 9:25 AM

Skin Cancer as a Chronic Disease

Adam Sutton, MD, MBA¹; Ashley Crew, MD¹; Ashley Wysong, MD, MS¹

Institution: 1. Keck School of Medicine of USC, Los Angeles, CA

♦ Represents advanced expertise level course

Scientific Program Schedule—Friday, April 29

9:30 – 10:00 am

Gatlin B

Patient Populations for Whom History Matters and How I Modify My Treatment

(0.50 Credit Hour)

At the conclusion of this session, participants should be able to:

- 1) Identify key points from patient clinical history that directly affect surgical management;
- 2) Identify when a multidisciplinary approach to patient care improves patient outcomes in dermatologic surgery;
- 3) Describe pre-operative treatment strategies that improve individual patient outcomes in dermatologic surgery.

Moderator: Fiona O. Zwald, MD, MRCPI, FACMS

Speakers: Justin J. Leitenberger, MD; Vishal A. Patel, MD; Thomas Stasko, MD, FACMS

10:00 – 10:30 am

Gatlin B

Office Safety Protocols

(0.50 Credit Hour)

At the conclusion of this session, participants should be able to:

- 1) Identify scenarios where the safety of Mohs surgery patients may be at risk;
- 2) Recognize how suboptimal office protocols may threaten patient safety;
- 3) Incorporate this knowledge into your own surgical practice to reduce risk.

Moderator: Deborah F. MacFarlane, MD, MPH, FACMS

Speakers: Murad Alam, MD, FACMS; Oliver J. Wisco, DO, FACMS

10:00 am – 6:30 pm

Gatlin C

Exhibit Hall Open

10:30 – 10:45 am

Gatlin C

Break

(CME Not offered)

10:45 – 11:30 am

Gatlin B

Case-Based Coding and Billing

(0.75 Credit Hour)

At the conclusion of this session, participants should be able to:

- 1) Identify resources to assist with questions related to billing and coding for Mohs surgery;
- 2) Recognize common billing and coding errors related to Mohs surgery, pathology and reconstruction;
- 3) Apply the knowledge of billing and coding benchmarks and patterns of appropriate utilization to their practice.

Moderators: John G. Albertini, MD, FACMS; Glenn D. Goldman, MD, FACMS

11:30 am – 12:15 pm

Gatlin B

Economic Profiling: How Insurers Measure the Cost-Effectiveness of Mohs Surgeons

(0.75 Credit Hour)

- 1) Recall how insurers employ claims-based data to evaluate provider efficiency in the treatment of skin cancer;
- 2) Describe the strengths and weaknesses of skin cancer treatment episode of care-based cost analysis;
- 3) Recall how changes to skin cancer episode definitions will improve accuracy of insurer profiling of Mohs surgeons.

Moderator: Howard W. Rogers, MD, PhD, FACMS

Guest Speaker: Peter Toensing, MD

12:15 – 2:00 pm

Gatlin B

ACMS Annual Business Meeting & Lunch

(Non-CME session)

At the conclusion of this session, participants should be able to understand past and future activities, achievements, and goals of the ACMS.

Moderator: John G. Albertini, MD, FACMS

ACMS Business Meeting & Lunch

Friday, April 29

12:15 – 2:00 pm

Gatlin B

ACMS members are encouraged to attend the annual membership business meeting and lunch.

This important meeting brings members up to date on issues of significance. The winners of the prestigious Frederic E. Mohs Award and Distinguished Service Award will be announced.



♦ Represents advanced expertise level course

Scientific Program Schedule—Friday, April 29

2:00 – 2:15 pm

Gatlin C

Break

(CME Not offered)

2:15 – 3:00 pm

Gatlin B

Partner With Your Dermatopathologist to Optimize Patient Care and to Avoid Pitfalls

(0.75 Credit Hour)

At the conclusion of this session, participants should be able to:

- 1) Identify the tumor presentations for which permanent section analysis is essential.
- 2) Discuss how to avoid pitfalls in the treatment of challenging tumors with Mohs surgery.
- 3) Describe how to effectively communicate with your dermatopathologist in order to optimize diagnosis, treatment, and outcomes.

Moderator: Thuzar M. Shin, MD, PhD, FACMS

Guest Speaker: Rosalie Elenitsas, MD

3:00 – 4:00 pm

Gatlin B

Pathology of Specialty Tumors: DFSP, Extramammary Paget's Disease, AFX, and Sebaceous Tumors ♦

(1.00 Credit Hour)

At the conclusion of this session, participants should be able to:

- 1) Identify high risk attributes of rare cutaneous tumors;
- 2) Select the best treatment approach for these specialty tumors;
- 3) Select appropriate immunohistochemical markers to help diagnose and identify these uncommon tumors.

Moderator: Keith L. Duffy, MD, FACMS

Guest Panelist: Rosalie Elenitsas, MD

Speakers:

DFSP

Hugh M. Gloster, Jr., MD, FACMS

EMPD

Ali Hendi, MD, FACMS

AFX

S. Tyler Hollmig, MD

Sebaceous tumors

Eva A. Hurst, MD, FACMS

4:00 – 4:15 pm

Gatlin C

Break

(CME Not offered)

4:15 – 5:15 pm

Gatlin B

Reconstruction Videos of Four Workhorse Flaps: Rhombic, Bilobed, Dorsal Nasal Rotation, and Nasolabial Transposition Flaps

(1.00 Credit Hour)

At the conclusion of this session, participants should be able to:

- 1) Identify the specific steps involved in performing these four common flaps;
- 2) Select appropriate uses of these four common flaps;
- 3) Describe the stages of flap design and execution.

Moderator: Thomas E. Rohrer, MD, FACMS

Speakers:

Rhombic Transposition Flaps

Anna A. Bar, MD, FACMS

The Bilobed Flap

Ken K. Lee, MD, FACMS

The Dorsal Nasal Rotation Flap

Juan-Carlos Martinez, MD, FACMS

The Proper Use of the Nasolabial Transposition Flap

Michael H. Swann, MD, FACMS

5:15 – 5:30 pm

Gatlin B

Blade & Light International

(Non-CME Session)

Representatives of Blade & Light International will highlight recent and ongoing programs, and inform ACMS members on how to get involved.

Hayes B. Gladstone, MD, FACMS; Vishal A. Patel, MD; Chrysalyne D.

Schmults, MD, MSCE, FACMS

Reception to follow in Butler & Butler Balcony; see p.8 for details

♦ Represents advanced expertise level course

Scientific Program Schedule—Saturday, April 30

7:00 – 8:15 am Locations listed below

Concurrent Morning Mini-Sessions

302.1 Elements of a Fulfilling Career in Mohs Surgery: Lessons from the AAD Leadership Academy

(1.25 Credit Hours) **St. John's 25 (Upper Level)**

At the conclusion of this session, participants should be able to:

- 1) Describe how a powerful vision and a cohesive culture impacts the success of a practice;
- 2) Recognize the value of self-awareness and integrity in your ability to lead and develop others;
- 3) Influence your patients, staff and colleagues through effective communication and organizational savvy.

Mary E. Maloney, MD, FACMS; Victor J. Marks, MD, FACMS; Marta J. VanBeek, MD, FACMS

302.2 Single- and Multi-Staged Reconstruction of the Ear: Principles to Incorporate into Your Practice ♦

(1.25 Credit Hours) **Gatlin A-1**

At the conclusion of this session, participants should be able to:

- 1) Describe general principles to guide reconstruction strategies for both small & larger challenging defects of the ear;
- 2) Identify defects of the ear that may benefit from modification of routine flaps and grafts;
- 3) Develop reliable reconstructive strategies for ear defects that require staged reconstruction.

John G. Albertini, MD, FACMS; Walayat Hussain, MD, FACMS

302.3 'Outside-of-the-Box' Variations of Common Reconstructions

(1.25 Credit Hours) **Gatlin A-2**

At the conclusion of this session, participants should be able to:

- 1) Identify specific anatomic locations that may benefit from site/defect specific variations on traditional flaps;
- 2) Describe the important flap dynamics that contribute to successful repair of difficult defects;
- 3) Illustrate how non-traditional reconstructions or variations on traditional reconstructions may be helpful in reconstructing complex defects.

David G. Brodland, MD, FACMS; J. Michael Wentzell, MD, FACMS

302.4 Morbidity and Mortality: Lessons in Oncology from Spindle Cell and Other Challenging Tumors

(1.25 Credit Hours) **Gatlin A-3**

- 1) Identify common and unique complications associated with cutaneous surgery;
- 2) Discuss preventive measures that can be used to avoid common complications of cutaneous surgery;
- 3) Identify the intricacies and challenges of diagnosing and managing spindle cell tumors.

Jerry D. Brewer, MD, FACMS; Allison T. Vidimos, MD, RPh, FACMS

302.5 Vein Surgery and the Basics of Phlebology

(1.25 Credit Hours) **Gatlin A-4**

At the conclusion of this session, participants should be able to:

- 1) Identify the anatomy and pathophysiology of superficial venous disease;
- 2) Recall considerations for selection of sclerosant agent and concentration as well as the role of foam sclerotherapy in the treatment of varicose and telangiectatic leg veins;
- 3) Identify surgical and endovascular strategies for managing large vein disease and minimize the adverse effects of leg vein treatments.

Todd V. Cartee, MD; Margaret Mann, MD, FACMS; Vineet Mishra, MD

8:00 am – 2:00 pm

Gatlin C

Exhibit Hall Open

8:30 – 9:15 am

Gatlin B

Mohs Surgery of the Nail Unit ♦

(0.75 Credit Hour)

At the conclusion of this session, participants should be able to:

- 1) Describe specific approach to perform Mohs surgery for nail tumors;
- 2) Explain techniques to address features unique to tumor and surgeries on and around the nail;
- 3) Identify risk factors that predict complications from surgery as well as recurrent disease.

Moderator: Nathaniel J. Jellinek, MD, FACMS

Guest Panelists: Benjamin Chang, MD, FACS; Stephen J. Kovach, III, MD

Speaker: Christopher J. Miller, MD, FACMS

9:15 – 9:45 am

Gatlin B

Essential Principles to Optimize Surgical Outcomes of the Hand ♦

(0.50 Credit Hour)

At the conclusion of this session, participants should be able to:

- 1) Describe the key elements of a preoperative screening history and physical exam for patients undergoing Mohs surgery of the hand;
- 2) Identify instances when multidisciplinary care may benefit patients undergoing Mohs surgery of the hand.
- 3) Implement postoperative care regimens that optimize patient outcomes after surgery of the hand.

Moderator: Christopher J. Miller, MD, FACMS

Guest Speaker: Benjamin Chang, MD, FACS

Guest Panelist: Stephen J. Kovach, III, MD

♦ Represents advanced expertise level course

Scientific Program Schedule—Saturday, April 30

9:45 – 10:15 am Gatlin B

Essential Principles to Optimize Surgical Outcomes of the Foot ♦

(0.50 Credit Hour)

At the conclusion of this session, participants should be able to:

- 1) Describe the key elements of a preoperative screening history and physical exam for patients undergoing Mohs surgery of the foot;
- 2) Identify instances when multidisciplinary care may benefit patients undergoing Mohs surgery of the foot;
- 3) Implement postoperative care regimens that optimize patient outcomes after surgery of the foot.

Moderator: Christopher J. Miller, MD, FACMS

Guest Speaker: Stephen J. Kovach, III, MD

Guest Panelist: Benjamin Chang, MD, FACS

10:15 – 10:30 am Gatlin c

Break

(CME Not offered)

10:30 – 11:00 am Gatlin B

Outcome Measures for Mohs Surgery: Moving Beyond Recurrence Rate and Tissue-Sparing

(0.50 Credit Hour)

At the conclusion of this session, participants should be able to:

- 1) Recall the value of Mohs surgical outcome measures in the academic and private practice settings;
- 2) Comprehend the need to develop patient-reported outcome measures in Mohs surgery;
- 3) Describe the direction of health care reform and what the Mohs surgical community is doing to improve patient care.

Moderator: Oliver J. Wisco, DO, FACMS

Speakers:

The Academic Perspective: Cleveland Clinic's Experience with Mohs Surgical Outcome Measures

Jennifer Lucas, MD

Cost Measures in Mohs Surgery

Ian A. Maher, MD, FACMS

Meaningful Mohs Surgical Outcomes in Private Practice

Michael Murphy, MD, FACMS

Patient Reported Outcome Measures in Mohs Surgery

Anthony Rossi, MD

11:00 am – 12:00 pm Gatlin B

Keynote Address

Art, Assassination, and America: The Physician Movement for Better Health Care

(1.00 Credit Hour)

At the conclusion of this session, participants should be able to:

- 1) Explain how the science of safety has matured to reduce errors and complications;
- 2) Recall how physician groups can develop metrics to measure surgical quality and improve outcomes;
- 3) Describe how healthcare reform will be influenced by common-sense reforms in transparency of medical information.

Introduction: John G. Albertini, MD, FACMS

Keynote Speaker: Martin Makary, MD, MPH

12:00 – 1:00 pm Gatlin C

Lunch in the Exhibit Hall

(CME Not offered)

1:00 – 1:30 pm Gatlin B

Eyelid Essentials for the Mohs Surgeon: Gross and Microscopic Anatomy

(0.50 Credit Hour)

At the conclusion of this session, participants should be able to:

- 1) Recognize relevant anatomic structures important to preservation of form and function of the periocular region;
- 2) Select appropriate options for preoperative prep, anesthesia, corneal protection and instrumentation for periocular surgery.

Moderator: Ann G. Neff, MD, FACMS

Guest Panelist: Wendy W. Lee, MD

1:30 – 2:30 pm Gatlin B

Periocular Reconstruction ♦

(1.00 Credit Hour)

At the conclusion of this session, participants should be able to:

- 1) Select appropriate reconstructive options to repair Mohs surgery defects of the periocular region.

Moderators: John G. Albertini, MD, FACMS

Guest Speaker: Wendy W. Lee, MD

2:30 – 2:45 pm Gatlin B

Break

(CME Not offered)

♦ Represents advanced expertise level course

Scientific Program Schedule—Saturday, April 30

2:45 – 3:30 pm

Gatlin B

Update on High-Risk Squamous and Basal Cell Cancers ♦

(0.75 Credit Hour)

At the conclusion of this session, participants should be able to:

- 1) Describe the characteristics of “high-risk” squamous cell and basal cell cancers;
- 2) Describe new developments in staging of squamous cell and basal cell cancers at high risk for local recurrence or metastasis;
- 3) Describe new therapies for inoperable or metastatic squamous cell and basal cell cancers.

Moderator: Chrysalyne D. Schmults, MD, MSCE, FACMS

Speakers:

BCC

Sumaira Z. Aasi, MD, FACMS

SCC

Christian L. Baum, MD, FACMS

3:30 – 4:00 pm

Gatlin B

Top Topics in Transplant Cutaneous Oncology from ITSCC

(0.50 Credit Hour)

At the conclusion of this session, participants should be able to:

- 1) Describe pros and cons of conversion of immunosuppression to a sirolimus based regimen;
- 2) Identify appropriate management strategies for skin cancer in transplant patients;
- 3) Define indications for use of adjuvant therapy for high risk squamous cell carcinoma.

Moderators: Elizabeth M. Billingsley, MD, FACMS; Clark C. Otley, MD, FACMS

Speakers:

Squamous Cell Carcinoma in Organ Transplant Recipients: When to Consider Adjuvant Treatment

Christian L. Baum, MD, FACMS

Melanoma in Organ Transplant Recipients

Sarah T. Arron, MD, PhD, FACMS

Sirolimus in Organ Transplant Recipients – What do the data say today?

An-Wen Chan, MD, DPhil, FRCPC, FACMS

4:00 – 5:00 pm

Gatlin B

Rapid Pearls Abstract Session

(1.00 Credit Hour)

At the conclusion of this session, participants should be able to recall anecdotal pearls in Mohs surgery technique, frozen section pathology, reconstructive surgery, and practice management.

Moderators: Timothy C. Flynn, MD, FACMS; Christopher B. Harmon, MD, FACMS

4:00 – 4:02 PM

Double Layer Undermining For Large Scalp Defects

Douglas Fife, MD^{1,2}; Mac Machan, MD^{1,2}; Brittney Call, MMS, PA-C¹

1. Surgical Dermatology & Laser Center, Las Vegas, NV
2. University of Nevada School of Medicine, Las Vegas, NV

4:03 – 4:05 PM

The Use of Gentian Violet Solution to Evaluate Complete Integrity of the Deep Margin During Mohs Micrographic Surgery

Jeremy R. Etzkorn, MD¹; Thuzar M. Shin, MD, PhD¹; Joseph Sobanko, MD¹; Christopher J. Miller, MD¹

1. Hospital of the University of Pennsylvania, Philadelphia, PA

4:06 – 4:08 PM

Hair-Bearing Scalp: A Novel Donor Site for Split-Thickness Grafts

Chetan Vedvyas, MD¹; Keyan Matinpour, MD¹; Leonard Goldberg, MD¹; Arash Asadi, MD¹

1. Dermatology Associates, Houston, TX

4:09 – 4:11 PM

Use of a Single Anatomic Donor Site for Harvesting a Full Thickness Skin Graft and a Free Cartilage Graft for Nasal Defects

Melanie Wong, MD¹; Mariah Brown¹

1. University of Colorado, Aurora, CO

4:12 – 4:14 PM

Equalizing Wound Edges of Uneven Lengths: The Buried Half-Horizontal, Half-Vertical Mattress

Wesley Wu, MD¹; Arianne Chavez-Frazier, MD²; Tri H. Nguyen, MD³

1. Baylor College of Medicine, Houston, TX
2. Park Avenue Dermatology, Fleming Island, FL
3. Mohs and Dermatology Associates, Houston, TX

4:15 – 4:17 PM

A Novel Fasciotomy Technique for the Keystone Flap

Zain Syed, MD, MBA^{1,2}; Heidi Donnelly, MD^{1,2}

1. Dayton Skin Care Specialists, Dayton, OH
2. Wright State University School of Medicine, Dayton, OH

4:18 – 4:20 PM

The Poor Man's Bilayer Wound Matrix

Spring Golden, MD¹; Anna Bar, MD¹; Justin Leitenberger, MD¹

1. Oregon Health and Science University, Portland, OR

4:21 – 4:23 PM

4x Dermoscopy in Mohs Micrographic Surgery

Jennifer Ang, MD²; Jason DuPont^{1,2}

1. Southern Arizona VA Health Care System, Tucson, AZ
2. University of Arizona-Banner University Medical Center, Tucson, AZ

4:24 – 4:26 PM

Inking Strategies to Ensure Complete Mohs Tissue Sections

Joseph F. Sobanko, MD¹; Ali A. Damavandy, MD¹; Christopher J. Miller, MD¹

1. University of Pennsylvania, Philadelphia, PA

4:27 – 4:29 PM

Single-Stage Nasolabial Transposition Flaps for Large Nasal Tip Defects

Ravi Krishnan, MD^{1,2}

1. Virginia Mason Medical Center, Seattle, WA
2. University of Washington School of Medicine, Seattle, WA

♦ Represents advanced expertise level course

Scientific Program Schedule—Saturday, April 30

4:30 – 4:32 PM

Modified Purse String Closure for Mohs Defects Near Facial Free Margins (Eyebrows and Lips)

Diana K. Cohen, MD, MS¹; Angela E. Aackus, MD¹; Jing Liu, MD^{1,2}; Hilary C. Reich, MD¹; Sarah E. Schram, MD^{1,3}; Peter K. Lee, MD, PhD¹

1. University of Minnesota, Minneapolis, MN
2. Hennepin County Medical Center, Minneapolis, MN
3. Pima Dermatology, Tucson, AZ

4:33 – 4:35 PM

Retroauricular Pull-Through Flap for Superior Auricular Defects

S. Tyler Hollmig, MD¹

1. Stanford University, Redwood City, CA

4:36 – 4:38 PM

The Batten Stitch: A Tissue-Sparing Technique for the Correction of Inverted Dog Ears

Michael Mortazie, DO¹; Jeremy C. Davis, MD²; Richard G. Bennett, MD^{3,4}

1. St. Joseph Mercy Hospital, Ypsilanti, MI
2. Georgetown University School of Medicine, Washington, DC
3. University of California-Los Angeles, Santa Monica, CA
4. University of Southern California, Santa Monica, CA

4:39 – 4:41 PM

Limitations of Staged Surgical Excisions

David Chen, MD¹; Adam Terella, MD¹; Mariah Brown, MD¹

1. University of Colorado, Aurora, CO

4:42 – 4:44 PM

Myospherulosis

Daniel J. Pearce, MD¹

1. The Skin Surgery Center, Winston-Salem, NC

5:15 – 6:45 pm

St. John's 28 (Upper Level)

Program Directors' Session

(Non-CME session)

6:45 – 7:30 pm

Butler & Butler Balcony

Fellows-in-Training Reception

(CME Not offered)

For Program Directors and current Fellows-in-Training only

Frederic E. Mohs Award Recipient

Leonard H. Goldberg, MD, FACMS

The ACMS would like to congratulate Dr. Goldberg on being named the recipient of the 2016 Frederic E. Mohs Award for devoting considerable time and effort over many years to further the goals and objectives of the organization and to promote the specialty.

We salute you!



♦ Represents advanced expertise level course

Scientific Program Schedule—Sunday, May 1

7:30 – 8:30 am

Gatlin B

Digital Diagnostic Quality Control Exam Review

(1.00 Credit Hour)

At the conclusion of this session, participants should be able to:

- 1) Recognize the false positives and false negatives in Mohs histopathology sections;
- 2) Improve dermatopathology skills to help distinguish benign findings from malignant processes;
- 3) Recognize errors in frozen-section tissue processing.

Moderator: Sumaira Z. Aasi, MD, FACMS

Speakers: S. Tyler Hollmig, MD; Kent J. Krach, MD, FACMS; Faramarz H. Samie, MD, PhD, FACMS; Seaver Soon, MD; Abigail Waldman, MD; Yaohui G. Xu, MD, PhD, FACMS

8:30 – 8:45 am

Gatlin B

Fellow-in-Training Clinicopathologic Case Competition Award Winner

(0.25 Credit Hour)

At the conclusion of this session, participants should be able to recall an uncommon or rare pathology or that illustrate prototypical diagnostic challenges and keys to diagnosis or tumor detection.

Moderator: Allison T. Vidimos, MD, RPh, FACMS

Winner: Thomas J. Knackstedt, MD

8:45 – 9:45 am

Gatlin B

Variations in Mohs Technique: Pros and Cons

(1.00 Credit Hour)

At the conclusion of this session, participants should be able to:

- 1) Recognize subtle aspects of the Mohs micrographic surgical procedure;
- 2) Identify variations in the performance of the procedure and their advantages and disadvantages;
- 3) Utilize variations of the Mohs technique in particular clinical scenarios to improve patient outcomes.

Moderators: Scott N. Isenhath, MD, FACMS; Juan-Carlos Martinez, MD, FACMS

Speakers: Anna A. Bar, MD, FACMS; Ali Hendi, MD, FACMS; Brian C. Leach, MD, FACMS; Jamie L. McGinness, MD, FACMS

9:45 – 10:00 am

Gatlin B

Break

(CME Not offered)

10:00 – 11:00 am

Gatlin B

Reconstruction Videos of Interpolation Flaps♦

(1.00 Credit Hour)

At the conclusion of this session, participants should be able to:

- 1) Design and execute common and uncommon interpolation flaps;
- 2) Recognize nuances that may lead to improved flap outcomes.

Moderators: Jeremy S. Bordeaux, MD, MPH, FACMS; Todd E. Holmes, MD, FACMS

Speakers: Mariah R. Brown, MD, FACMS; Tri H. Nguyen, MD, FACMS; Melissa Pugliano-Mauro, MD, FACMS

11:00 am – 12:00 pm

Locations listed below

Concurrent MOC Sessions

MOC Self-Assessment: Office Safety

Gatlin A-1

(Non-CME session)

At the conclusion of this session, participants should be able to:

- 1) Assess and understand the key areas of how office based safety pertains to the practice of dermatology;
- 2) Integrate and apply the concepts of office based safety to improve office efficiency, safety, and satisfaction in the workplace of a dermatologic surgery practice;
- 3) Distinguish the most common as well as the most detrimental office based safety issues pertaining to procedural dermatology.

Moderator: Jonathan Olson, MD

Speaker: Jill McKenzie, MD

MOC Self-Assessment: Skin Cancer

Gatlin A-2

(Non-CME session)

At the conclusion of this session, participants should be able to:

- 1) Define the appropriate work-up and management for patients with certain types or risk factors for skin cancer;
- 2) Identify appropriate surgical and pharmacologic management options for patients with skin cancer as well as mechanisms of action and side effects of the pharmacologic agents;
- 3) Recognize the necessary components for self-assessment submission in the Maintenance of Certification program through the American Board of Dermatology.

Moderator: Justin J. Leitenberger, MD

Speakers: Anna A. Bar, MD, FACMS; Matthew C. Fox, MD; Iren Kossintseva, MD; Dominic Ricci, MD

MOC Self-Assessment: Procedural Dermatology Gatlin B

(Non-CME session)

At the conclusion of this session, participants should be able to:

- 1) Review key concepts in nail surgery, lasers, and venous disease;
- 2) Recognize the various types of chemical peels and discuss the benefits and complications;
- 3) Describe the principles of anesthesia in relation to pregnancy and drug allergy.

Moderator: Vineet Mishra, MD

Speakers: Anthony Rossi, MD; Seaver Soon, MD

12:00 pm

Meeting adjourns

♦ Represents advanced expertise level course

Poster Presentation List

Posters will be displayed inside the Exhibit Hall. Posters will be displayed from 11:00 am Thursday, April 28 through 2:00 pm Saturday, April 30.

Authors have been requested to stand by their poster to answer any questions during the following timeframes:

Even Number Posters (2 – 38):

Thursday, April 28 from 12:00-1:00 pm

Odd Number Posters (1 – 37):

Saturday, April 30 from 12:00-1:00 pm

1

Comparison of American Joint Committee on Cancer and Brigham and Women's Hospital Tumor Staging for Cutaneous Squamous Cell Carcinoma in Immunosuppressed Patients

Jessica L. Gonzalez, BS¹; Kiera Cunningham, BS¹; Melanie Chen¹; Maggie Feng¹; Elana Madan¹; Rebecca Silverman¹; Ronghao Zhou¹; Bichchau Michelle Nguyen, MD, MPH¹

1. Tufts Medical Center, Boston, MA

2

Role of Alkaline Ceramidases and Bioactive Sphingolipids in Non-Melanoma Skin Cancer

Chih-Li Lin¹; Ruijuan Xu¹; Fang Li¹; Evan Jones¹; Jordan Slutsky¹; Lina Obeid¹; Yusuf Hannun¹; Cungui Mao¹

1. Stony Brook University, Stony Brook, NY

3

Comparison of Three Embedding Media for Preparation of Frozen Sections for Mohs Micrographic Surgery

Jeave Reserva, MD¹; Cindy Krol, BS¹; Jodi Speiser, MD¹; William Adams, MA¹; Eleanor Tung-Hahn¹; Murad Alam, MD, MSCI²; Rebecca Tung, MD¹

1. Loyola University Chicago, Maywood, IL
2. Northwestern University, Chicago, IL

4

Does the Method of Preoperative Education Influence Levels of Patient-Reported Anxiety and Satisfaction for Patients Undergoing Mohs Micrographic Surgery?

Joseph F. Sobanko¹; Diego DaSilva, MSII¹; Zelma Chiesa Fuxench¹; Badri Modi¹; Thuzar Shin, MD, PhD¹; Jeremy Etzkorn¹; Sara Samimi¹; Karolyn Wanat²; Christopher J. Miller, MD¹

1. University of Pennsylvania, Philadelphia, PA
2. University of Iowa, Iowa City, IA

5

Frequency of Residual Squamous Cell Carcinoma (SCC) in Elliptical Excision vs. Mohs Micrographic Surgery Specimens after Diagnostic Biopsy of SCC-in Situ

Eduardo K. Moioli, MD, PhD¹; Clifford Hsieh, BS¹; Angela R. Tisch, BSN¹; Diana Bolotin, MD, PhD¹

1. University of Chicago, Chicago, IL

6

Incidence of Occult Tumor in Biopsy Proven Basal Cell Carcinoma Lesions - Analysis of Variation Factors and Impact of Clinical Outcome

Luke Hyder, MD¹; Chih Shan Jason Chen^{1,2}

1. Stony Brook University Hospital, East Setauket, NY
2. Memorial Sloan Kettering Cancer Center, Hauppauge, NY

7

Desmoplastic Trichoepithelioma. Institutional Retrospective Chart Review and Systemic Review of All Cases Reported in English Literature

Sean E. Mazloom, MD¹; Alex C. Holliday, MD¹; Naeha Gupta, MS²; Golta Rasouli, MD¹; Garrett Coman, MD¹; Mariana A. Phillips, MD¹; Michael Kolodney, MD, PhD¹; Rahul N. Chavan, MD, PhD¹; Douglas J. Grider, MD¹

1. Virginia Tech Carilion Clinic, Roanoke, VA
2. Edward Via College of Osteopathic Medicine, Blacksburg, VA

8

Absence of Characteristic Lymphocytic Infiltrates on Frozen Sections of Mohs Surgery in Patients with Non-Hodgkin Lymphoma

Luke C. Nicholas¹; Dori Goldberg¹; Mary E. Maloney¹

1. University of Massachusetts School of Medicine, Worcester, MA

9

A Prospective Multi-Center Characterization of Melanoma Treated with Mohs Micrographic Surgery

Patrick M. Ellison, MD¹; John A. Zitelli, MD²; David G. Brodland, MD²

1. Queen's Medical Center, Honolulu, HI
2. Zitelli & Brodland Skin Cancer Center, Pittsburgh, PA

Poster Presentation List

10

Scar Outcomes in Dermatologic Surgery: Does Intraoperative Technique Influence Clinician and Patient Reported Outcomes?

Junqian Zhang, BS¹; Victoria O'Malley, BA¹; Eric Bowman, Jr., BA¹; Christopher Miller, MD¹; Jeremy Etzkorn, MD¹; Thuzar Shin, MD, PhD¹; Joseph Sobanko, MD¹

1. University of Pennsylvania, Philadelphia, PA

11

The Effects of Topical Dapsone Gel on Wound Healing

Matthew Q. Hand, MD¹; Doug Grossman, MD, PhD¹; Keith Duffy, MD¹

1. University of Utah School of Medicine, Salt Lake City, UT

12

Pleomorphic Dermal Sarcoma: A Case Series Further Delineating a Separation from Atypical Fibroxanthoma

James W. Behan, MD¹; Min Deng, MD³; Michael A. Renzi, BS³; Alexandre Ly, RN, BSN²; Daniel Belkin, MD²; Naomi Lawrence, MD³; Ashley Wysong, MD, MS²

1. University of Colorado Health Sciences, Denver, CO
2. University of Southern California, Los Angeles, CA
3. Cooper Medical School of Rowan University, Marlton, NJ

13

Mohs Micrographic Surgery for the Treatment of Dermatofibrosarcoma Protuberans: A Retrospective Follow-up Study of Patients Treated with Consistent Surgical Margins by a Single Surgeon Over an 18 Year Period

Nikki Tang, MD¹; Priya Nayyar²; Zena Zoghbi³; Vishal Patel, MD³; Desiree Ratner, MD¹

1. Mt. Sinai Beth Israel Comprehensive Cancer Center, New York, NY
2. Northwell Health Physician Partners, Manhasset, NY
3. Columbia University Medical Center, New York, NY

14

Outcomes for Wide Local Excision Compared with Mohs Micrographic Surgery for Melanoma in Situ

Adi Nosrati, MD¹; Shilpa Goel, MD²; Joseph McGuire¹; Barbara Grimes, MS, PhD¹; Jacqueline Berliner, MD¹; Vera Morhenn, MD²; Roy Grekin, MD¹; Ana Griffin, PhD¹; Maria L. Wei, MD, PhD¹

1. University of California, San Francisco, CA
2. Veterans Affairs Medical Center, San Francisco, CA

15

Recognizing Value in US Healthcare Expenditure: A Comparison of US and Japanese Procedural Skin Cancer Treatment Costs

Thomas Barlow, DO, DHEd¹

1. US Naval Hospital, Yokosuka, Japan

16

Diagnostic Change from Atypical Intraepidermal Melanocytic Proliferation to Melanoma after Conventional Excision – A Cross-Sectional Single Academic Institution Study

Junqian Zhang, BS¹; Jeremy Etzkorn, MD²; Christopher Miller, MD¹; Joseph Sobanko, MD¹; Thuzar Shin, MD, PhD¹

1. University of Pennsylvania, Philadelphia, PA
2. University of Pennsylvania, Yardley, PA

17

Evaluation of Early Postoperative Quality of Life in Mohs Micrographic Surgery Patients

Joseph Sobanko, MD¹; Junqian Zhang, BS¹; Victoria O'Malley, BA¹; Thuzar Shin, MD, PhD¹; Jeremy Etzkorn, MD¹; Christopher Miller, MD¹

1. University of Pennsylvania, Philadelphia, PA

18

Patient-Acquired Photographs for the Management of Post-Operative Concerns

Sowmya Ravi, MD¹; Molly S. Moye, MD¹; Divya Srivastava, MD¹; Rajiv I. Nijhawan, MD¹

1. University of Texas Southwestern Medical Center, Dallas, TX

19

A Synthetic, Injectable Microporous Wound Healing Scaffold to Decrease Inflammation and Scar Formation after Full Thickness Surgical Excision

Stephanie J. Martin¹; Don Griffin, PhD¹; Westbrook Weaver, PhD¹; Gary Lask¹; Theresa Soriano¹; Philip Scumpia¹

1. UCLA, Los Angeles, CA

20

Modification of the Zitelli Bilobed Flap

Ashley N. Sullivan¹; Timothy Wang¹; Robert Egbers¹

1. Johns Hopkins, Baltimore, MD

Poster Presentation List

21

The Effect of Porcine Xenografts in Reducing Pain and Inflammatory Chondritis in Auricular Mohs Defects Healing by Secondary Intention: A Prospective Randomized Controlled Single-Blind Pilot Study

Sean E. Mazloom, MD¹; Garrett Coman, MD¹; Alex C. Holliday, MD¹; Rahul N. Chavan, MD, PhD¹; Marian A. Phillips, MD¹

1. Virginia Tech Carilion Clinic, Roanoke, VA

22

Randomized Trial Comparing Pressure versus Simple Adhesive Dressing after Mohs Reconstruction

Eleni Marmarelis¹; Faramarz Samie, MD, PhD²

1. Geisel School of Medicine at Dartmouth, Lebanon, NH
2. Dartmouth Hitchcock Medical Center, Lebanon, NH

23

Mohs Micrographic Surgery in the Treatment of Rare Cutaneous Tumors

Jesse Y. Howell, MD¹; Jonathan Wood¹; Craig Wood¹; Victor Marks, MD¹; Lance Wood, MD¹

1. Geisinger Health Systems, Danville, PA

24

Outcomes of a Combination Melolabial Interpolation Flap and Local Tissue Flap for Large Nasal Defects: A Multicenter Series

Judah N. Greenberg, MD¹; Kathryn Kreicher, BA²; Nicole M. Burkemper, MD¹; Jeremy S. Bordeaux, MD, MPH²; Ian H. Maher, MD¹

1. St. Louis University School of Medicine, St. Louis, MO
2. Case Western Reserve University School of Medicine, Cleveland, OH

25

Horizontal Primary Closure of the Forehead: Does It Cause Long-Term Eyebrow Asymmetry?

Daniel Winchester, MD¹; Logan Skellye, MD¹; Adam Wright, MD¹; Michael Chang, MD¹; Christian Baum, MD¹; Jerry Brewer, MD¹; Christopher Arpey, MD¹; Clark Otley, MD¹; Randall Roenigk, MD¹

1. Mayo Clinic, Rochester, MN

26

Basal Cell Carcinoma of the Head and Neck: The Role of Anatomic Location in Clinically Undetectable Tumor Extension

Ashley M. Yu, BHSc¹; Jillian Macdonald, MD, FRCPC¹

1. The Ottawa Hospital, Ottawa, ON, Canada

27

A Retrospective Assessment of Post-Operative Complications in Patients on a Vast Array of Antithrombotic Medications Following Dermatologic Surgery

Robert Eilers, MD¹; S. Brian Jiang, MD¹

1. University of California San Diego, San Diego, CA

28

Algorithmic Reconstruction of Facial Cosmetic Subunits: A Training Tool

Adam Spurduto, MD¹; Christopher Harmon, MD¹

1. Surgical Dermatology Group, Birmingham, AL

29

True Margin: A Novel Approach to Tissue Embedding

Jonathan Kanevsky, MD¹; Tyler Safran¹; Kurt Hemmings¹; Manish Khanna, MD¹

1. McGill University Health Center, Montréal, QC, Canada

30

MMS Practice-Specific Evaluation of the Affordability and Impact on Patient Care of Novel in vivo Imaging Systems

Kate L. Montgomery, PhD¹; Gabriel Sanchez, PhD¹; Fred Landavazo, IV, MS¹

1. Zebra Medical Technologies, Mountain View, CA

31

Does Surgical Removal Improve Quality of Life in Nonmelanoma Skin Cancer Patients? A Prospective Study

Stephanie Mlacker, BS¹; Adam S. Aldahan, BS¹; Vidhi V. Shah, BA¹; Daniel Fatemi, BS¹; Daniel J. Baldor BS¹; Sahal Samarkandy, MD¹; Keyvan Nouri, MD¹

1. University of Miami Miller School of Medicine, Miami, FL

32

Purse-String Closure After Lower Extremity Dermatologic Procedures May Contribute to Postoperative Infection Risk

Su Luo, MD¹; Suzanne M. Olbricht, MD^{1,2}

1. Lahey Hospital and Medical Center, Burlington, MA
2. Harvard Medical School, Boston, MA

Poster Presentation List

33

The Utility of Dehydrated Human Amnion/Chorion Membrane Allograft in Lower Extremity Mohs Defects Healing by Secondary Intention: A Case Series

Sean E. Mazloom, MD¹; Jonathan R. Hottman, BS²; Alex C. Holliday, MD¹; Garrett Coman, MD¹; Rahul Chavan, MD, PhD¹; Michael Kolodney, MD, PhD¹; Mariana Phillips, MD¹

1. Virginia Tech Carilion Clinic, Roanoke, VA
2. Virginia Tech School of Medicine, Roanoke, VA

34

Treatment of Squamous Cell Carcinoma of the Nail Unit with Mohs Micrographic Surgery

Matthew LeBoeuf, MD, PhD¹; Joseph Sobanko, MD¹; Christopher Miller, MD¹

1. University of Pennsylvania, Philadelphia, PA

35

A Comparison of the Duration of Intradermal 1% Lidocaine with Epinephrine 1:100,000 and 1:1 Mixture of 1% Lidocaine with 1:100,000 Epinephrine and 0.5% Bupivacaine

Cory Trickett, DO¹; David Kent, MD¹

1. Dermatologic Surgery Specialists, Macon, GA

36

Neoadjuvant Use of Vismodegib Prior to Excision by Mohs Micrographic Surgery in Patients with Basal Cell Carcinoma

Sarah Arron, MD¹; Seaver Soon, MD²; Glen Bowen, MD³; Shari A. Ochoa⁴; Gagik Oganessian, MD, PhD⁵; Clay J. Cockerell, MD^{6,7}; Sherrif Ibrahim, MD⁸; Yong Mun⁹; Keith Dawson⁹; Jean Tang¹⁰; Abel Torres, MD¹¹

1. University of California, San Francisco, San Francisco, CA
2. Scripps Clinic, La Jolla, CA
3. Huntsman Cancer Institute at the University of Utah, Salt Lake City, UT
4. Mayo Clinic Scottsdale, Scottsdale, AZ
5. Sutter Pacific Medical Foundation, Santa Rosa, CA
6. University of Texas Southwestern Medical Center, Dallas, TX
7. Cockerell Dermatopathology, Dallas, TX
8. University of Rochester Medical Center, Rochester, NY
9. Genentech, Inc., South San Francisco, CA
10. Stanford University, Redwood City, CA
11. Case Western Reserve University, Loma Linda, CA

37

Birhombic Transposition Flaps for Repairs of Surgical Defects of the Nasal Dorsum

Thomas J. Knackstedt, MD¹; Nathaniel J. Jellinek, MD¹⁻³

1. Dermatology Professionals, Inc., East Greenwich, RI
2. The Warren Alpert Medical School at Brown University, Providence, RI
3. University of Massachusetts Medical School, Worcester, MA

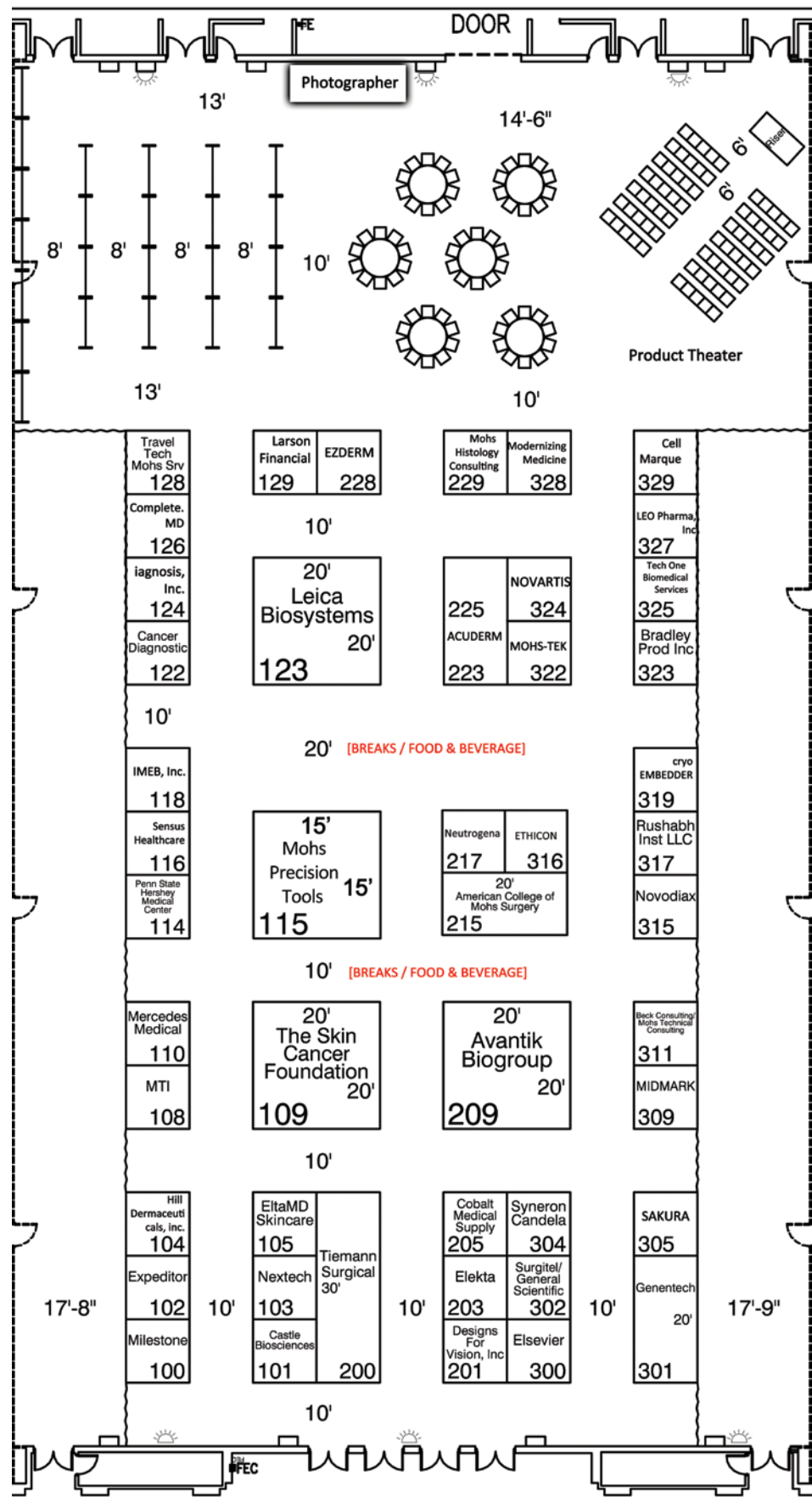
38

Minimizing Tissue Wastage in Mohs Micrographic Surgery Frozen Section Processing Using a Novel Embedding Device

Manish Khanna, MD¹; Kurt Hemmings¹

1. Jewish General Hospital, Westmount, QC, Canada

Exhibit Hall Floor Plan



Exhibitor Listing

Attendees are encouraged to visit the technical exhibits during the ACMS Annual Meeting. A variety of companies of interest to Mohs and dermatologic surgeons will be displaying their products, equipment, and services. Please be sure to visit the exhibit hall to learn about their quality offerings. A complete list of exhibitors and a locator map are included here and in the Annual Meeting mobile app.

Exhibit Hall Hours

Thursday, April 28: 9:30 am – 7:30 pm
Friday, April 29: 10:00 am – 6:30 pm
Saturday, April 30: 8:00 am – 2:00 pm

223, 225 Acuderm

5370 NW 35th Ter., Suite 106
Ft. Lauderdale, FL 33309
P (954) 449-2271
jkroop@acuderm.com
www.acuderm.com

Acuderm is proud to have been serving dermatologists with high quality, Made in the USA, disposable instruments for more than 30 years. New to our brand are top quality reusable surgical instruments made in Germany at significant savings! We invite you to feel the difference! As with all our products, we offer 100% satisfaction guarantee! When you think high quality instruments, think Acuderm!

Island 209 Avantik Biogroup (Sponsor)

36 Commerce Street | PO Box 619
Springfield, NJ 07081-0619
P (973) 912-8900 ext. 159
F (973) 232-0077
sean.gallagher@avantik-us.com
www.avantik-us.com

Avantik Biogroup is dedicated to providing solutions for Mohs laboratories with quality new instruments like the revolutionary Avantik QS12 Cryostat, fully remanufactured instruments with the best warranty in the industry, and a large selection of Avantik quality consumable goods from reagents and stains to slides and coverslips. From Mohs lab design, planning and set-up, to the industry's most attentive service and support, Avantik Biogroup is the only true choice for your Mohs laboratory!

311 Beck Consulting/Mohs Technical Consulting

894 Buck Falls Road
Highlands, NC 28741
P (828) 369-2315
F (800) 282-3015
histobarb@msn.com
www.beck-us.com

Beck Consulting provides the only accredited program for technical training and consulting for Mohs and Histology laboratories for more than 15 years! We offer complete technical assistance and training for Mohs and Histology, as well as the ability to train on your own equipment in your own office, or one of our workshops. Become proficient in cutting Mohs and Histopathology sections, and experience full lab setups for both Derm Path and Mohs. Training includes CLIA/OSHA documentation. We have 623 labs set up to date with zero deficiency ratings, and can create a procedure manual specific to your lab. Ask for our available references!

323 Bradley Products, Inc.

1700 West 94th St.
Minneapolis, MN 55431
P (952) 881-1430
solson@bradleyproducts.com
www.bradleyproducts.com

Bradley Products is the manufacturer of The Davidson Marking System, the first tissue marking system specifically developed for orienting specimens. Economical, efficient, visible, reliable and safe, Davidson Marking System marking dyes have been used since 1984 and are CE marked for Europe. DMS dyes are appropriate for fresh or frozen tissue.

122 Cancer Diagnostics, Inc.

4300 Emperor Blvd., Suite 400
Durham, NC 27703
P (877) 846-5393
info@cancerdiagnostics.com
www.cancerdiagnostics.com

Founded in 1998, Cancer Diagnostics, Inc. (CDI) developed the first commercially available 7-dye color kit for marketing margins and today offers one of the industry's largest anatomical pathology/Mohs consumable lines to over 3500 customers. Explore our newest catalog and find out what makes CDI the fastest growing consumables supplier to the worldwide anatomical pathology and Mohs market. Reliable products. Easy ordering. On-time deliveries. Guaranteed satisfaction.

Exhibitor Listing

101 Castle Biosciences, Inc.

820 S. Friendswood Drive, Suite 201
Friendswood, TX 77546
P (866) 788-9007
F (866) 431-2924
conferences@castlebiosciences.com
www.castlebiosciences.com

Castle Biosciences, Inc. is a cancer-focused molecular diagnostics company dedicated to helping patients and their physicians make the best possible decisions about their treatment and care based on the individual molecular signature of their tumor. DecisionDx-Melanoma is a new test that identifies metastatic risk in melanoma patients (www.SkinMelanoma.com).

329 Cell Marque

6600 Sierra College Blvd.
Rocklin, CA 95677
P (916) 746-8900
aottino@cellmarque.com
www.cellmarque.com

Cell Marque provides an expansive portfolio of IVD antibodies, detection chemistries and reagents for immunohistochemistry. Our diagnostic markers are tested and validated for use on multiple automated staining platforms. By offering consistent quality, we strive to ensure ease of use and proper diagnosis of your patients.

205 Cobalt Medical Supply, Inc.

PO Box 367
Pequannock, NJ 07440
P (973) 305-0730
mmazon@cobaltmed.com
www.cobaltmed.com

Cobalt is a full line provider of surgical and clinical equipment, instruments and supplies to complement the needs of the dermatologist and surgeon. We match great service with high quality products to assist our clients with the many needs and challenges they have.

126 Complete.MD

900 Mohawk St., Suite E
Savannah, GA 31419
P (912) 925-0067
kspence@complete.md
www.complete.md

A cloud-based platform to connect patients, physicians, labs, and pharmaceutical companies.

319 cryoEMBEDDER

3434 East 7800 South #131
Salt Lake, UT 84121
P (801) 598-6413
jackie@cryoEMBEDDER.com
www.cryoEMBEDDER.com

cryoEMBEDDER represents a meticulous yet simple and extremely fast embedding process for frozen sectioning. Its design is safe and ergonomically friendly for the technician. The instrument is virtually unbreakable, has no disposable parts and a lifetime warrantee. It's designed to adapt to all makes of cryostats and provides an eye level view of specimens during the embedding process. It's efficient, fast, accurate, economical, indestructible, and it works.

201 Designs For Vision, Inc.

760 Koehler Ave.
Ronkonkoma, NY 11779
P (631) 585-3300
F (631) 585-3404
conventions@DVimail.com
www.designsforvision.com

Just See It™ with Designs for Vision's lightweight custom-made surgical Telescopes- now available with Nike® frames. See It Even Better™ with the L.E.D. Daylite® or Twin Beam®, L.E.D. Daylite® providing the brightest and safest un-tethered illumination. Introducing the L.E.D. Daylite® Nano Cam HD document procedure and HD video from your prospective.

203 Elekta

400 Perimeter Center Terrace, Suite 50
Atlanta, GA 30346
P (770) 300-9725
lori.minton@Elekta.com
www.elekta.com

Elekta develops significant innovations and clinical solutions for the treatment of cancer and brain disorders. Esteya® electronic brachytherapy is Elekta's new patient-friendly solution for treating skin cancer. Esteya can be used anywhere in the clinic, has a favorable procedure time and offers user-friendly operation. Learn more about Esteya at www.esteya.com.

Exhibitor Listing

300 Elsevier

1600 John F. Kennedy Boulevard, Suite 1800
Philadelphia, PA 19106
P (215) 239-3492
F (215) 239-3434
k.dubard@elsevier.com
www.elsevier.com

Elsevier is a world-leading provider of information solutions that enhance the performance of science, health, and technology professionals, empowering them to make better decisions, deliver better care, and sometimes make groundbreaking discoveries that advance the boundaries of knowledge and human progress. Elsevier provides web-based, digital solutions — among them ScienceDirect, Scopus, Elsevier Research Intelligence and ClinicalKey — and publishes over 2,500 journals, including The Lancet and Cell, and more than 33,000 book titles, including a number of iconic reference works. Elsevier is part of RELX Group plc, a world-leading provider of information solutions for professional customers across industries.

105 EltaMD Skincare

2055 Luna Rd #126
Carrollton, TX 75006
P (317) 442-8226
pdorman@eltamd.com
www.eltamd.com

EltaMD® product development expertise is based on our medical heritage. EltaMD applies that experience to create innovative products that help develop, protect and maintain healthy skin. Available through your dispensing physician, EltaMD sun care and skin care products are formulated for every skin type, lifestyle and special need.

316 Ethicon, Inc. (Major Sponsor)

US Route 22 West
Somerville, NJ 08876
P (908) 218-2214
lemerson@its.jnj.com
www.ethicon.com

Ethicon US LLC, brings to market a broad range of innovative surgical products, solutions and technologies used to treat some of today's most prevalent medical issues, such as: colorectal and thoracic conditions, spine and cardiovascular conditions, cancer, obesity and other conditions requiring general surgery. Learn more at www.ethicon.com.

102 Expeditor

4090 Nine McFarland Drive
Alpharetta, GA 30004
P (770) 442-0405
earvidson@expeditor.com
www.expeditor.com

For more than three decades, Expeditor has been a pioneer in developing the world's most effective LEAN Patient Flow solutions, which were founded on three simple goals: Increase efficiencies, Increase revenues, Build a more satisfying office environment. Expeditor continues to develop value-based patient flow system to meet your practice's unique needs

228 EZDERM

90 Cypress Way East, Suite 50
Naples, FL 34110
P (239) 260-4603
ivana@ezderm.com
www.ezderm.com

EZDERM is a software company that provides one seamless solution for your entire dermatology practice including electronic health records, practice management, patient portal, laboratory information system, and patient check-in system.

301 Genentech

1 DNA Way
South San Francisco, CA 94080
P (650) 255-2169
emusser@gene.com
www.gene.com

Considered the founder of the industry, Genentech, now a member of the Roche Group, has been delivering on the promise of biotechnology for over 35 years. At Genentech, we use human genetic information to discover, develop, manufacture and commercialize medicines to treat patients with serious or life-threatening medical conditions. Today, we are among the world's leading biotech companies, with multiple products on the market and a promising development pipeline.

104 Hill Dermaceuticals, Inc.

2650 S. Mellonville Ave.
Stanford, FL 32773
P (407) 323-1887
brenda.rottinghaus@hillderm.com
www.hillderm.com

Hill Dermaceuticals, Inc. specializes in developing dermatology products for adults and children with difficult-to-treat diseases, such as Actinic Keratosis, scalp Psoriasis, Atopic Dermatitis/Eczema, chronic Eczema of the external ear canal. For information about our prescription products, call (800) 344-5707.

Exhibitor Listing

124 Iagnosis, Inc.

4 Smithfield Street, 11th Floor
Pittsburgh, PA 15222
P (412) 224-2336 x3120
dhorn@iagnosis.com
www.iagnosis.com

Iagnosis, Inc. is focused on delivering faster healthcare treatment to patients through web-enabled solutions. Its flagship product, DermatologistOnCall®, is best-in-class for helping board-certified dermatologists in the U.S. offer patients convenient 24/7 online and mobile access to affordable, high-quality skin, hair and nail medical care.

118 IMEB, Inc.

170 Vallecitos De Oro
San Marcos, CA 92069
P (760) 761-0836
ashley@imebinc.com
www.imebinc.com

IMEB, INC. specializes in refurbished and new lab equipment for the Dermatology/Mohs Lab. Call IMEB for: Cryostats, Fume Hoods, Microscopes, Stainers, Cabinets for flammables and more. Visit our website to see hundreds of instruments and products to choose from. For information, call (800) 543-8496 or email sales@imebinc.com.

129 Larson Financial

1015 Corporate Square Drive, Suite 300
St. Louis, GA 63132
P (989) 941-7119
matthew.dodge@larsonfinancial.com
www.larsonfinancial.com

Larson Financial is a nationwide wealth management firm specializing in physicians and their families. We are committed to helping our clients understand each step of a comprehensive planning process. We share practical solutions that can be used to help you, your practice and family create and protect your wealth.

i123 Leica Biosystems (Sponsor)

1700 Leider Lane
Buffalo Grove, IL 60089
P (847) 405-5424
F (847) 236-3060
susie.przybylski@leicabiosystems.com
www.leicabiosystems.com

Leica Biosystems, a global leader in workflow solutions and automation, provides anatomic pathology laboratories and researchers a comprehensive product range for each step in the pathology process, from sample preparation and staining to imaging and reporting. Our easy-to-use and consistently reliable offerings help improve workflow efficiency and diagnostic confidence.

327 LEO Pharma, Inc.

1 Sylvan Way
Parsippany, NJ 07054
P (973) 637-8361
tmmus@leo-pharma.com
www.leo-pharma.com

LEO Pharma helps people achieve healthy skin. By offering care solutions to patients in more than 100 countries globally, LEO Pharma supports people in managing their skin conditions. Founded in 1908 and owned by the LEO Foundation, the healthcare company has devoted decades of research and development to delivering products and solutions to people with skin conditions. LEO Pharma is headquartered in Denmark and employs around 4,800 people worldwide.

110 Mercedes Medical

7590 Commerce Court
Sarasota, FL 34243
P (800) 331-2716 Ext. 238
F (800)-359-8807
mjenkins@mercedesmedical.com
www.MercedesMedical.com

Mercedes Medical, Inc. is a privately held, woman-owned national medical distribution company located in Sarasota, Florida and is a two-time winner of Inc. 500's One of America's Fastest Growing Companies. For more than 20 years, Mercedes has prided itself on being the low cost leader in the medical supply market.

309 Midmark Corporation

60 Vista Drive
Versailles, OH 45380
P (800) 643-6275
F (800) 365-8631
felsass@midmark.com
www.midmark.com

Midmark Corporation is committed to providing innovative products and solutions to healthcare professionals around the world. Offering full lines of exam and procedures tables, as well as workstations, casework, instrument processing, digital diagnostic solutions and more. Midmark is focused on continuously improving physician workflows and enhancing patient-caregiver interactions.

100 Milestone (Sponsor)

6475 Technology Avenue, Suite F
Kalamazoo, MI 49009
P (269) 488-4950
a.kelly@milestonemed.com
www.milestonemed.com

Milestone is a developer of microwave tissue processors, digital imaging systems, and preprocessing products for histology. Our unique products enable laboratory professionals to produce quality results by standardizing tissue handling and preparation from the surgical suite to completion of processing. Applying technology in new ways to produce safer working environments, better quality results and reduce patient anxiety is at the heart of everything we do.

Exhibitor Listing

328 Modernizing Medicine

3600 FAU Boulevard, Suite 202
Boca Raton, FL 33431
P (561) 880-2998
elena.gleadall@modmed.com
www.modmed.com

Modernizing Medicine is transforming how healthcare information is created, consumed and utilized to increase efficiency and improve outcomes. The Company's product, Electronic Medical Assistant® (EMA™), is a cloud-based, specialty-specific electronic medical record (EMR) system with a massive library of built-in medical content and coding expertise, designed to save physicians time.

229 Mohs Histology Consulting Services

2507 S. Manito Blvd
Spokane, WA 99203
P (509) 954-7134
mickie25@netzero.net
www.mohshistologyconsulting.com

Mohs Histology Consulting Services has a 15-year record of excellence in providing new Mohs laboratories with planning, equipment selection and placement, as well as a complete CLIA manual and accredited Mohs technician training with certification. We have set up many labs from scratch and trained hundreds of technicians. You won't be disappointed in our exemplary service. We are often called back for additional training when the need arises.

i115 Mohs Precision Tools

1690 Saint Joseph East
Montreal, Quebec H2J 1M9 Canada
P (844) 288-6647
mohshistotech@hotmail.com
www.mohsprecisiontools.com

Mohs Precision Tools is a pioneer in addressing alignment issues in cryostats. The True Margin is the only device that aligns the tissue plain to the microtome blade. We offer cryotomy solutions for busy Mohs surgeons, perfect sections are our passion.

322 MohsTEK, Inc. (Sponsor)

11758 Willard Ave.
Tustin, CA 92782
P (949) 559-6647
F (949) 559-6647
radhasee@yahoo.com
www.mohstek.com
www.biopsyprep.com

MohsTEK has dedicated 25 years to our own oath to keep the highest quality, fastest speeds, and hands down some of the best customer service around. MohsTEK offers its very own Mohs technicians, in-house biopsy prep lab, highest-quality frozen and paraffin section slides, in-house transportation services, and much more.

108 MTI

3655 Ninigret Dr.
Salt Lake City, UT 84093
P (801) 875-4903
F (801) 952-0548
matthew.baker@mti.net
www.mti.net

MTI's products are perfect for any Dermatologist. Our chairs and tables include the 430, 429, 428, 450, 450W, 410, 424, and 423 models. Depending on the model, some features include power Lift/Back/Tilt/Foot, optional 340° swivel base, 20", 22", or 24" tapered or squared backrest, premium velcro-attached upholstery and limitless accessories.

217 Neutrogena

14119 Hambleton Drive
Houston, TX 77069
P (713) 302-3653
deanne.smith@inventivhealth.com
www.neutrogenamd.com

The Neutrogena® Brand, one of the brands of Johnson & Johnson Consumer Inc., advances skin and hair care science through continuous support of the medical community and through the development of clinically proven products that deliver real results to physicians, nurses and patients. Please visit our website for dermatology professionals at www.NeutrogenaMD.com for information about recent additions to the Neutrogena® product line.

103 Nextech

5550 W. Executive Dr., Suite 350
Tampa, FL 33609
P (813) 425-9200
j.williams@nextech.com
www.nextech.com

Nextech is the customizable, fully-integrated EMR and practice management provider of Dermatology solutions that improves efficiency and maximizes patient volume. Tailored to work alongside the workflow of any dermatologist, Nextech is committed to your practice's long-term success. To learn more about the top-ranked specialty solution, visit www.nextech.com.

324 & Product Theatre Novartis Pharmaceuticals (Platinum & Gold Sponsor)

One Health Plaza, 434
East Hanover, NJ 07936
P (862) 778-5711
celine.lafatte@novartis.com
www.novartis.com

Novartis Pharmaceuticals is dedicated to discovering, developing, manufacturing and marketing prescription drugs that help meet our customers' medical needs and improve their quality of life.

Exhibitor Listing

315 Novodiox

3517 Breakwater Ave.
Hayward, CA 94545
P (510) 574-7325
diana@novodiox.com
www.novodiox.com

Novodiox's mission is to reduce patient's suffering and unnecessary medical expenses by providing more precision diagnostics. Novodiox provides pathologists with a series of 10-min IHC products that may be applied to intraoperative tissue examinations, including Pan-Cytokeratin, Mart-1 and SOX-10.

114 Penn State Hershey Medical Center

90 Hope Drive, MC A590
Hershey, PA 17033
P (717) 531-6205
hpeffley@hmc.psu.edu
www.hmc.psu.edu

Penn State Hershey Medical Center is committed to enhancing the quality of life through improved health, the professional preparation of those who will serve the health needs of others, and the discovery of knowledge that will benefit all. We are a 551-bed Level I regional trauma center academic medical center.

317 Rushabh Instruments, LLC

1750A Costner Drive
Warrington, PA 18976
P (215) 491-0081 Ext. 1
F (215) 491-0080
preyasshah@att.net
www.qualityhistology.com

Rushabh Instruments, LLC designs and manufactures high quality medical laboratory equipment. We develop and manufacture products that are innovative, easy to use and work well in your work environment. Our Histology product line currently includes Tissue Embedding Center, H&E Slide Stainer, Frozen Section Stainer for Mohs Labs, Floatation Water Bath and Paraffin Dispenser. Our products are designed and built in Warrington, Pennsylvania, USA.

305 Sakura Finetek USA, Inc.

1750 W. 214th St.
Torrance, CA 90501
P (800) 725-8723
ahammer@sakuraus.com
www.sakuraus.com

Sakura Finetek, USA, Inc. offers cryostats, slide staining kits, Cryomolds, OCT Compound and disposable Accu-Edge blades for Mohs labs to help technicians do their work – simply, consistently and productively. Reliability, dependability, and quality are the cornerstones of an unbeatable combination of traditions that span more than two decades of innovation at Sakura.

116 Sensus Healthcare

851 Broken Sound Parkway NW, #215
Boca Raton, FL 33487
P (561) 922-5808
jroger@sensushealthcare.com
www.sensushealthcare.com

Sensus Healthcare is focused on making proven non-melanoma skin cancer solutions more accessible to patients. Our dedicated superficial radiation therapy (SRT) systems are designed specifically to provide an alternative to surgical procedures for basal cell and squamous cell carcinomas. Our mobile, compact SRT-100 systems are used widely by oncologists and dermatologists to bring non-melanoma skin cancer treatment to more patients in more settings.

302 SurgiTel/General Scientific Corporation

77 Enterprise Drive
Ann Arbor, MI 48103
P (800) 959-0153
F (734) 662-0520
events@surgitel.com
www.surgitel.com

SurgiTel is the manufacturer of premium loupes and headlights sold around the world from their headquarters in Ann Arbor Michigan. Holding a variety of patents SurgiTel is always on the forefront of Vision and Ergonomics.

304 Syneron Candela

530 Boston Post Road
Wayland, MS 01778
P (866) 259-6661
doanb@syneron-candela.com
www.syneron-candela.com

Syneron Candela is the global leader in the aesthetic medical device marketplace. We combine a level of expertise and customer understanding superior to that of any company in our industry, offering customers the broadest available product portfolio, the best global service organization, and an expansive worldwide distribution network.

325 Tech One Biomedical Services

10115 Franklin Avenue
Franklin Park, IL 60131
P (603) 623-1271
rob@techonebiomedical.com
www.techonebiomedical.com

Tech One Biomedical Services has been providing on-site and in-shop repairs for hospitals, private labs, and research facilities with fifteen service technicians in the mid-west and east coast providing coverage in these areas.

Exhibitor Listing

i109 The Skin Cancer Foundation (Sponsor)

149 Madison Avenue, Suite 901
New York, NY 10016
P (646) 583-7988
bhanley@skincancer.org
www.skincancer.org

The Skin Cancer Foundation is the only global organization solely devoted to the prevention, early detection and treatment of skin cancer. The mission of the Foundation is to decrease the incidence of skin cancer through public and professional education and research. Since its inception in 1979, the Foundation has recommended following a complete sun protection regimen that includes seeking shade and covering up with clothing, including a wide-brimmed hat and UV-blocking sunglasses, in addition to daily sunscreen use.

200, 202, 205 Tiemann Surgical

25 Plant Avenue
Hauppauge, NY 11788
P (800) 843-6266
F (800) 577-6050
brian@georgetiemann.com
www.georgetiemann.com

Tiemann will display a full line of surgical instruments and accessories for Mohs surgery. We are experts at assisting the Mohs surgeon assemble surgical trays.

128 Travel Tech Mohs Services

1300 223rd. St., #411
Carson, CA 70745
P (310) 328-7846
karen@gotmohs.com
www.gotmohs.com

Travel Tech Mohs Services, Inc. is a histology technician service specializing in Mohs Micrographic Surgery. We provide all the machinery as well as a skilled professional in Mohs histology. Our team of Mohs technicians have been providing the highest quality Mohs frozen sectioning available for the past 20 years.

USED IN OVER 1,000 OFFICES
INTERNATIONALLY,
The **cryoEMBEDDER®**

- Adapts to all makes of cryostats
- Fast turn around time
- Ergonomic design
- Add more patients to surgery schedule
- Pays for itself with one Mohs surgery
- Unlimited (800) Tech Support
- Lifetime warranty

cryoEMBEDDER®

Patented
System



The **cryoEMBEDDER®** has revolutionized the process of preparing fresh tissue for frozen sectioning.

It provides quick and precise tissue sample preparation by speeding up the embedding process and enhancing the quality of slides for diagnosis.



Mohs Training Workshop

- Courses for beginners and experienced technicians
- 3 day training: Thur., Fri., and Sat.
- Hands-on training with 10 hours cutting time
- Variety of methods demonstrated
- HT ASCP certified instructors
- Workshop fees include room, meals, and materials

3434 East 7800 South #131
Salt Lake City, UT 84121
Fax: 801-453-0187
1-800-447-0718
www.cryoembedder.com

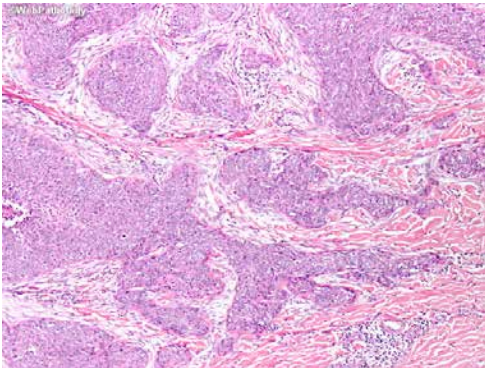


Speaker Index

Aasi, Sumaira Z.	24, 32, 34	Highsmith, James T.	24	Patel, Vishal A.	28, 29
Alam, Murad	23, 25, 28	Hirshburg, Jason M.	25	Pearce, Daniel J.	33
Albertini, John G.	23, 28, 30, 31	Hollmig, S.Tyler	29, 33, 34	Perlis, Clifford S.	23
Ang, Jennifer	32	Holmes, Todd E.	34	Pugliano-Mauro, Melissa	34
Arpey, Christopher J.	27	Hurst, Eva A.	29	Ratner, Désirée	23
Arron, Sarah T.	25, 32	Hussain, Walayat	25, 30	Regula, Christie	24
Auh, Sogyong	24	Isenhath, Scott N.	34	Ricci, Dominic	34
Bar, Anna A.	29, 34	Jellinek, Nathaniel J.	30	Rogers, Howard W.	28
Baum, Christian L.	32	Johnson, Ryan P.	24	Rohrer, Thomas E.	29
Bichakjian, Christopher K.	32	Knackstedt, Thomas J.	25, 34	Rossi, Anthony	31
Billingsley, Elizabeth M.	32	Kohli, Nita	25	Ruiz, Emily S.	24
Bordeaux, Jeremy S.	27, 34	Kossintseva, Iren	34	Samie, Faramarz H.	26, 27, 34
Brewer, Jerry D.	24, 26, 30	Kovach, III, Stephen J.	30, 31	Schmults, Chrysalyne D.	29, 32
Brodland, David G.	27, 30	Krach, Kent J.	34	Shaikh, Waqas	27
Brown, Mariah R.	34	Krishnan, Ravi S.	32	Sharon, Victoria	26
Burger, Laura	23	Lawrence, Naomi	23, 25	Shin, Thuzar M.	24, 25, 29
Carroll, Bryan T.	24, 26	Leach, Brian C.	34	Singh, Babu	25
Cartee, Todd V.	30	Lee, Erica H.	26	Smith, III, Sidney P.	25
Chan, An-Wen	32	Lee, Ken K.	29	Sobanko, Joseph F.	23, 26, 32
Chang, Benjamin	30, 31	Lee, Wendy W.	31	Soon, Seaver	34
Chang, Timothy W.	25	Leitenberger, Justin J.	28, 34	Stasko, Thomas	27, 28
Chen, David L.	30	Lopez, Jonathan	27	Stevenson, Mary	27
Cohen, Diana	33	Lucas, Jennifer	31	Sutton, Adam	27
Connolly, Karen	24	MacFarlane, Deborah F.	28	Swann, Michael H.	29
Cook, Joel	23	Machan, Mac	24	Syed, Zain U.	32
Cook, Jonathan L.	25, 27	Maher, Ian A.	25, 31	Toensing, Peter	28
Damavandy, Ali A.	24	Makary, Martin	31	Torres, Abel	23
Duffy, Keith L.	29	Maloney, Mary E.	30	VanBeek, Marta J.	30
Eisen, Daniel B.	26	Mann, Margaret	30	Vedvyas, Chetan	32
Elenitsas, Rosalie	29	Marks, Victor J.	30	Vidimos, Allison T.	25, 30, 34
Etzkorn, Jeremy	23, 32	Martinez, Juan-Carlos	29, 34	Wade, Jeanie	23
Fife, Douglas	32	McGinness, Jamie L.	34	Waldman, Abigail	34
Flynn, Timothy C.	32	McKenzie, Jill	34	Wentzell, J. Michael	30
Fosko, Scott W.	27	Miller, Christopher J.	23, 27, 30, 31	Wisco, Oliver J.	28, 31
Fox, Matthew C.	23, 34	Mishra, Vineet	30, 34	Wong, Melanie	32
Gladstone, Hayes B.	29	Mortazie, Michael	33	Wu, Wesley	32
Gloster, Jr., Hugh M.	29	Mu, Euphemia W.	27	Xu, Yaohui G.	34
Golden, Spring	32	Murphy, Michael	31	Yu, Siegrid S.	23
Goldman, Glenn D.	23, 28	Neff, Ann G.	24, 31	Zeitouni, Nathalie C.	27
Goreschi, Renato	24	Nehal, Kishwer S.	25	Zilinsky, Isaac	27
Greenhaw, Bradley N.	27	Nguyen, Tri H.	27, 34	Zitelli, John A.	25, 27
Hanlon, Allison M.	27	Nijhawan, Rajiv I.	26	Zwald, Fiona O.	28
Harmon, Christopher B.	32	Olson, Jonathan	34		
Hendi, Ali	29, 34	Otley, Clark C.	32		



MOHS-TECHNICIAN SERVICES



- Expertly trained Mohs technicians
- Great quality of frozen section slides
- All necessary equipment and supplies are provided
- Highest possible speed without compromising quality
- We fulfill all CLIA standards and regulations
- 100% Reliability guarantee!

BIOPSY PREP SERVICES



- In-house laboratory specializing in Skin Tissue Processing
- Low Cost
- High Quality
- Perfectly prepared paraffin sectioned slides
- In-house delivery & pick up services
- All necessary supplies for collection and transportation are provided
- 24 Hour turnaround time!



BIO SYSTEMS

The MARKET LEADER

in Cryotomy



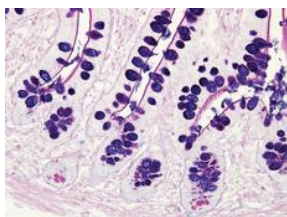
Cryostats



Lab Supplies



Stainers



Special Stains



Scanners



Microscopes

**Visit us at our booth for our
New Lab Promotions!**



TRUE MARGIN™

The only embedding device that compensates for angular errors in cryostats - perfect block alignment every time.

- ✿ Embed layers quickly and accurately with fewer false positives - process more cases
- ✿ Sections that truly represent the path of the surgeon's knife

INCREASE
in productivity

REDUCTION
in false positives

"Skin is precious, cut it wisely."

Call us today! To see how the True Margin™ will improve your practice.



MOHS PRECISION TOOLS

1-844-CUT MOHS

www.mohsprecisiontools.com

Notes



Save the Date

49th Annual Meeting
SAN FRANCISCO
APRIL 27-30, 2017

Save the Date **50TH ANNUAL MEETING • Chicago • May 3-6, 2018**



American College of Mohs Surgery
555 East Wells Street, Suite 1100
Milwaukee, WI 53202

Phone: (414) 347-1103 • (800) 500-7224 • Fax: (414) 276-2146

Email: info@mohscollege.org • Website: www.MohsCollege.org / www.SkinCancerMohsSurgery.org